

**BENCHMARK:**

City Disc In T.C. Adj. to F.H.  
17.5' North of Monterey. At the  
South West Corner of Lot 10  
Block C Auburn Hills 15th  
Addition.  
Elev. = 177.39 (City Datum)

City Disc In T.C. Adj. to F.H.  
27' North of Monterey. At the  
Intersection of Monterey and  
Auburn Hills.  
Elev. = 179.40 (City Datum)

P.V.I.  
Elev. = 174.40  
No V.C.

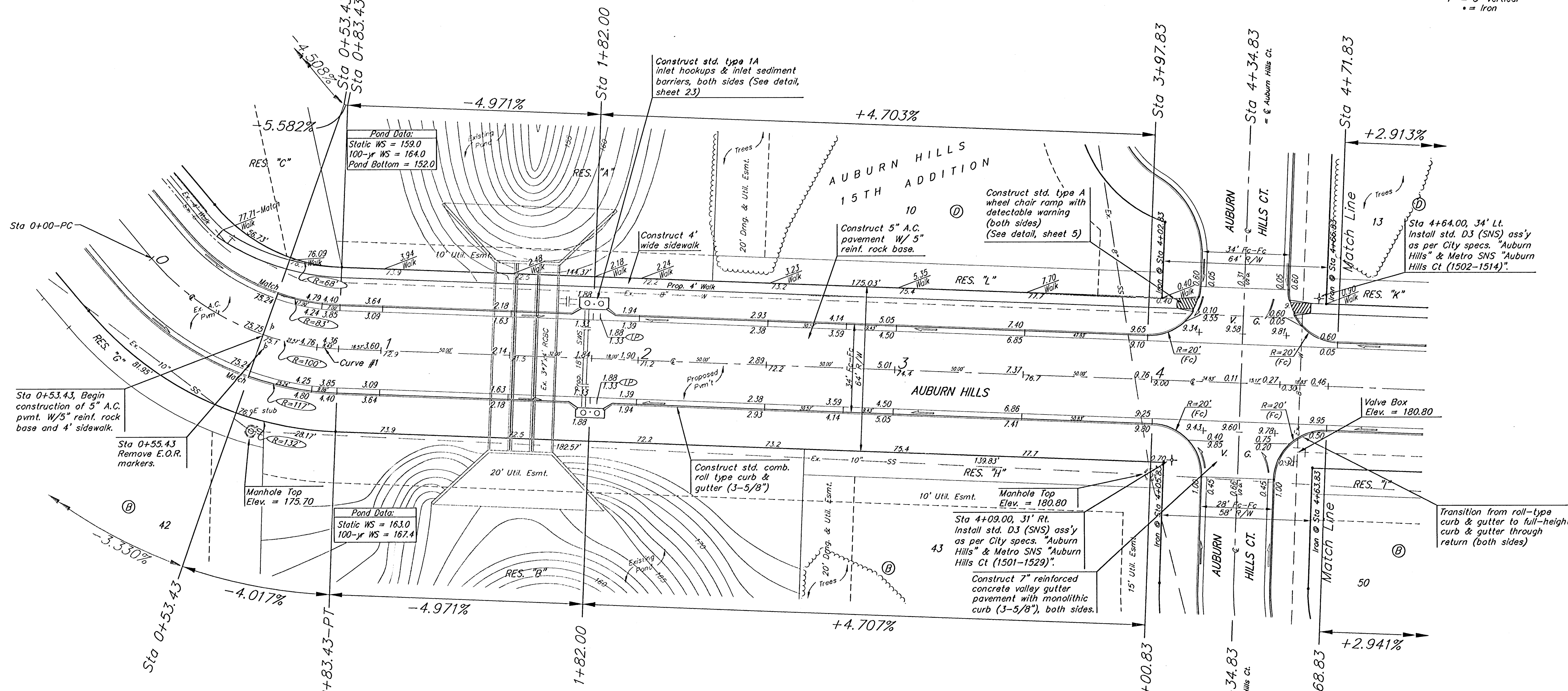
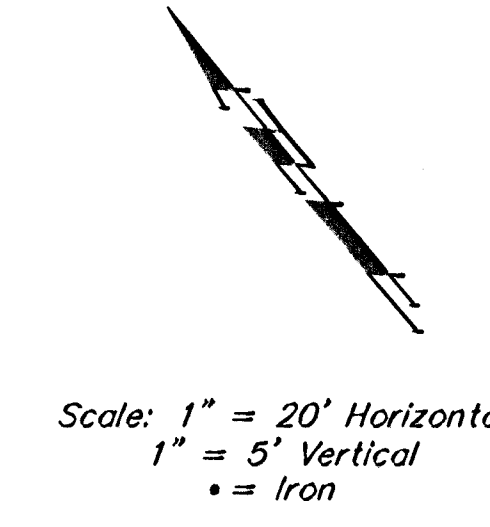
P.V.I.  
Elev. = 175.79  
No V.C.

P.V.I.  
Elev. = 169.50  
197.14' V.C.

P.V.I.  
Elev. = 175.81  
No V.C.

P.V.I.  
Elev. = 174.40  
No V.C.

P.V.I.  
Elev. = 169.50  
197.14' V.C.



Curve #1  
Curve Data Based on Centerline

Rad. = 100', Delta = 47° 48' 05", Tangent = 44.32'  
Arc = 83.43', L.C. = 81.03', Del/TA = 17.18896 Min.

Station	FACE CHORD LENGTHS		Defl.	T. Defl.
	8' Lt.	8' Rt.		
0+00.00	-	-	0°00'00"	0°00'00"
0+53.43	53.43'	39.60'	66.00'	15°18'23"
0+75.00	21.57'	16.15'	26.91'	6°10'45"
0+83.43	8.43'	6.32'	10.53'	2°24'54"

NOTE: ROLL TYPE CURB & GUTTER TO BE CONSTRUCTED ON THE PAVEMENT SHOWN ON THIS SHEET. TOP OF CURB ELEVATIONS ARE GIVEN FOR FULL HEIGHT CURB.

**Baughman** AUBURN HILLS 15TH ADDITION - PHASE 2A  
STA 0+53.43 TO STA 4+68.83

PROJECT NUMBER: 472-83931  
DESIGN: AEG  
DRAWN: TMS  
APPROVED: [Signature]  
DATE: 05/05

REVISIONS: [Table with 2 columns: No., Description]

SCALE: Noted  
SHEET: 7 OF 25

Auburn15/PL2A/Set 0411E097