

BENCHMARK:

City Disc In T.C. Adj. to F.H.
17.5' North of Monterey. At the
South West Corner of Lot 10
Block C Auburn Hills 15th
Addition.
Elev. = 177.39 (City Datum)

City Disc In T.C. Adj. to F.H.
27' North of Monterey. At the
Intersection of Monterey and
Auburn Hills.
Elev. = 179.40 (City Datum)

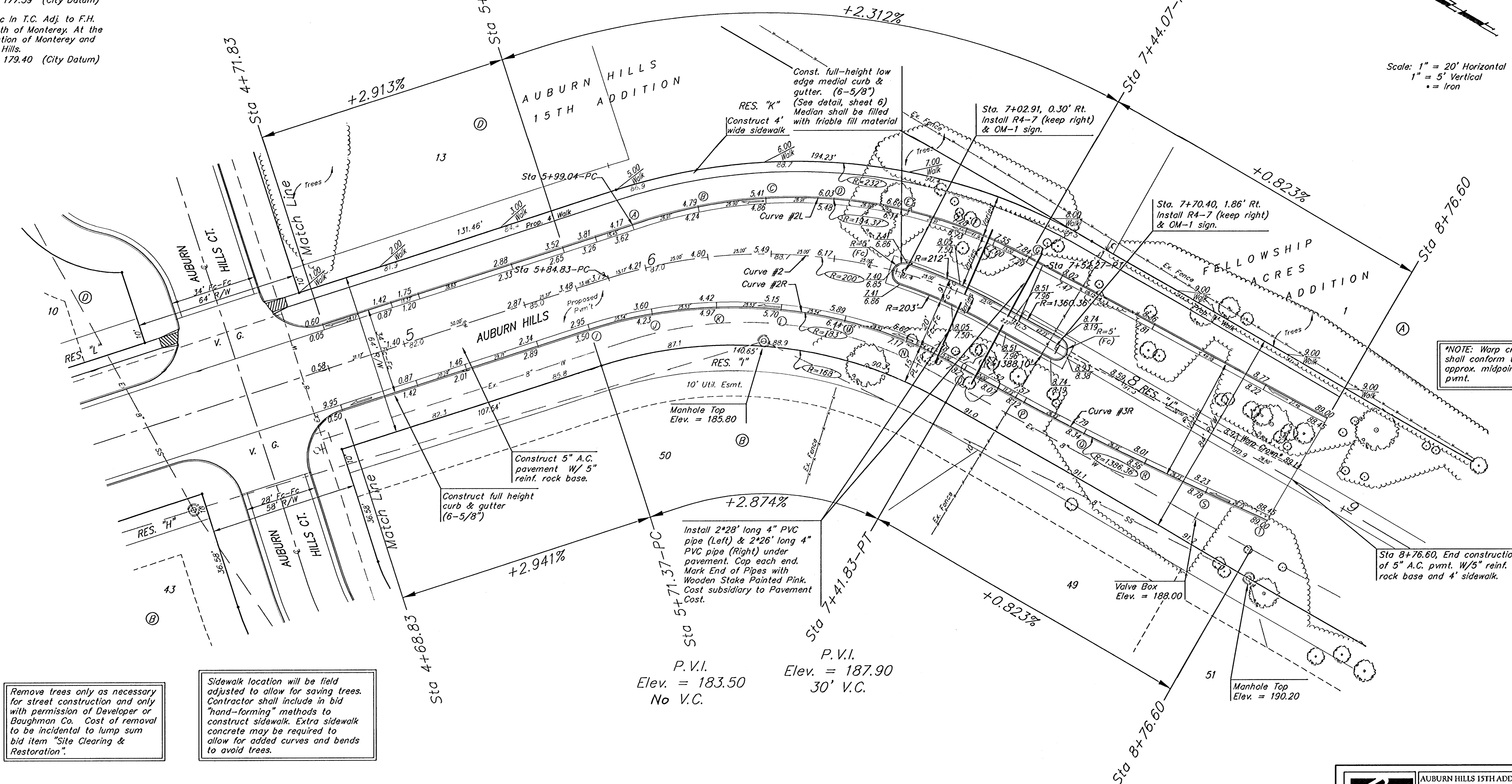
P.V.I.
Elev. = 183.50
No V.C.

P.V.I.
Elev. = 187.90
30' V.C.

Scale: 1" = 20' Horizontal
1" = 5' Vertical
• = Iron

*NOTE: Warp crown
shall conform to
approx. midpoint of
pvmt.

Sta 8+76.60, End construction
of 5" A.C. pvmt. W/5" reinf.
rock base and 4' sidewalk.



Remove trees only as necessary
for street construction and only
with permission of Developer or
Baughman Co. Cost of removal to
be incidental to lump sum
bid item "Site Clearing &
Restoration".

Sidewalk location will be field
adjusted to allow for saving trees.
Contractor shall include in bid
"hand-forming" methods to
construct sidewalk. Extra sidewalk
concrete may be required to
allow for added curves and bends
to avoid trees.

Curve #2L
Curve Data Based on Fc
Rad. = 194.37' Delta = 47° 35'03" Tangent = 85.70'
Arc = 161.43' L.C. = 156.83' Def/Ft. = 8.84300 Min.

Station	Arc	FACE CHORD LENGTHS		
		B Lt.	Defl.	T. Defl.
A		0'00"00"	0'00"00"	0'00"00"
B	26.91'	27.99'	3'57'58"	3'57'59"
C	26.90'	27.99'	3'57'52"	3'57'50"
D	26.91'	27.99'	3'57'58"	11'53'48"
E	26.90'	27.99'	3'57'52"	15'51'41"
F	26.91'	27.99'	3'57'58"	19'49'39"
G	26.90'	27.98'	3'57'52"	23'47'31"

Curve #2R
Curve Data Based on Fc
Rad. = 183' Delta = 47° 58'08" Tangent = 81.42'
Arc = 153.21' L.C. = 148.77' Def/Ft. = 9.39277 Min.

Station	Arc	FACE CHORD LENGTHS		
		B Rt.	Defl.	T. Defl.
J	25.54'	24.40'	3'59'53"	3'59'53"
K	25.53'	24.39'	3'59'48"	7'59'41"
L	25.53'	24.39'	3'59'48"	11'59'29"
M	25.54'	24.40'	3'59'53"	15'59'22"
N	25.53'	24.39'	3'59'48"	19'59'10"
O	25.54'	24.40'	3'59'53"	23'59'04"

Curve #3R
Curve Data Based on Fc
Rad. = 1386.36' Delta = 5° 30' 41" Tangent = 66.73'
Arc = 133.65' L.C. = 133.31' Def/Ft. = 1.23712 Min.

Station	Arc	FACE CHORD LENGTHS		
		B Rt.	Defl.	T. Defl.
P	26.73'	26.82'	0'00'00"	0'00'00"
Q	26.73'	26.82'	0'03'04"	0'03'04"
R	26.73'	26.82'	0'03'04"	1'06'08"
S	26.73'	26.82'	0'03'04"	1'39'12"
T	26.73'	26.82'	0'03'04"	2'12'16"

Baughman AUBURN HILLS 15TH ADDITION - PHASE 2A
STA 4+68.83 TO STA 8+76.60

PROJECT NUMBER: 472-83931
DESIGN: AEO
DRAWN: TMS
APPROVED: [Signature]
DATE: 06/05

SCALE: Noted
SHEET: 8 OF 25

Auburn15/Ph2A/Sr2 04-11-E097