

BENCHMARK:

City Disc In T.C. Adj. to F.H. 17.5' North of Monterey. At the South West Corner of Lot 10 Block C Auburn Hills 15th Addition.
Elev. = 177.39 (City Datum)

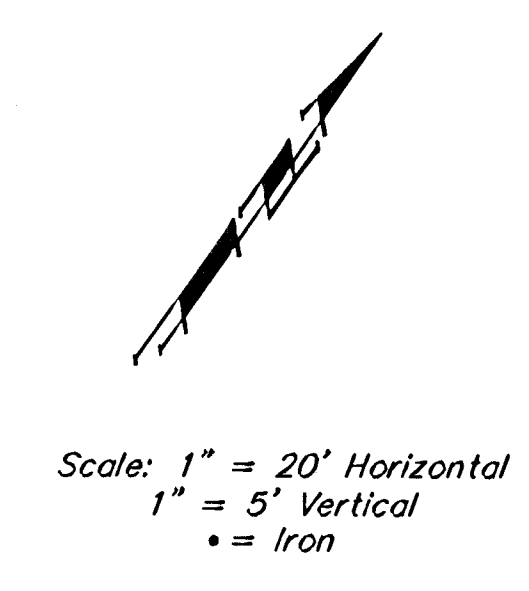
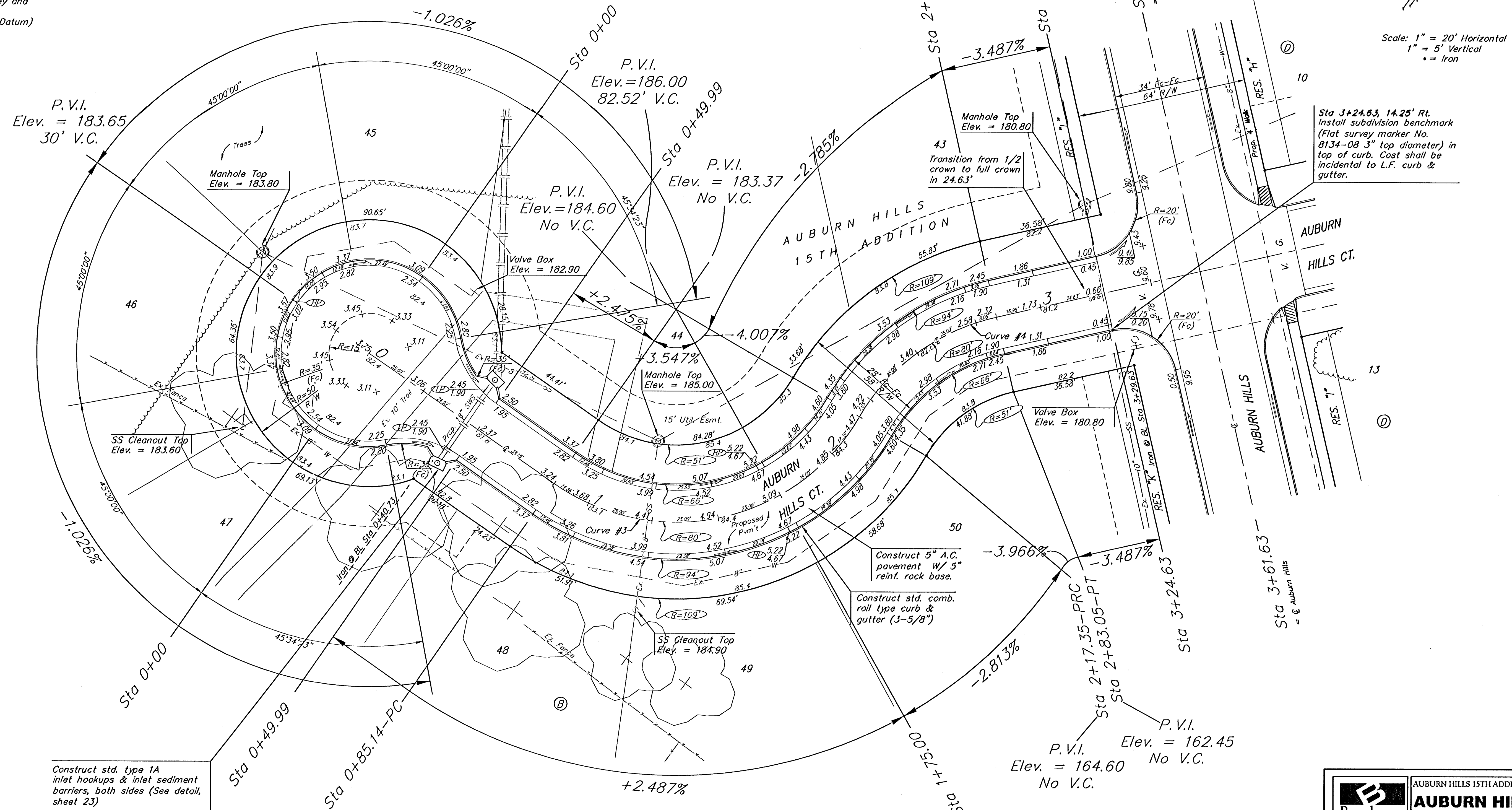
City Disc In T.C. Adj. to F.H. 27' North of Monterey, at the Intersection of Monterey and Auburn Hills.
Elev. = 179.40 (City Datum)

Curve #3
Curve Data Based on Centerline
Rad. = 80' Delta = 94° 41' 11" Tangent = 86.83'
Arc = 132.21' L.C. = 117.67' Def/Flt. = 21.48545 Min.

Station	Arc	FACE CHORD LENGTHS		Defl.	T. Defl.
		8' Lt.	8' Rt.		
0+85.14	-	-	-	0°00'00"	0°00'00"
1+00.00	14.86'	10.76'	18.92'	5°19'16"	5°19'16"
1+25.00	25.00'	18.05'	31.74'	8°57'08"	14°16'24"
1+50.00	25.00'	18.05'	31.74'	8°57'08"	23°13'33"
1+75.00	25.00'	18.05'	31.74'	8°57'08"	32°10'41"
2+00.00	25.00'	18.05'	31.74'	8°57'08"	41°07'49"
2+17.35	17.35'	12.55'	22.08'	6°12'46"	47°20'35"

Curve #4
Curve Data Based on Centerline
Rad. = 80' Delta = 47°03'05" Tangent = 34.83'
Arc = 65.2' L.C. = 63.82' Def/Flt. = 21.48465 Min.

Station	Arc	FACE CHORD LENGTHS		Defl.	T. Defl.
		8' Lt.	8' Rt.		
2+17.35	-	-	-	0°00'00"	0°00'00"
2+25.00	7.65'	9.75'	5.54'	2°44'21"	2°44'21"
2+50.00	25.00'	31.74'	18.05'	8°57'08"	11°41'29"
2+75.00	25.00'	31.74'	18.05'	8°57'08"	20°38'35"
2+83.05	8.05'	10.26'	5.83'	2°52'57"	23°31'32"



Scale: 1" = 20' Horizontal
1" = 5' Vertical
• = Iron

Construct std. type 1A inlet hookups & inlet sediment barriers, both sides (See detail, sheet 23)

Subdivision Bench Marks

Street & Station	Location Description	Elevation
Auburn Hills 3+24.63, 14.25' Rt.	Adjacent to Fire Hydrant at SW End of SE Curb Return of Auburn Hills and Auburn Hills Ct.	

NOTE: ROLL TYPE CURB & GUTTER TO BE CONSTRUCTED ON THE PAVEMENT SHOWN ON THIS SHEET. TOP OF CURB ELEVATIONS ARE GIVEN FOR FULL HEIGHT CURB.

Baughman ENGINEERING | SURVEYING | PLANNING | LANDSCAPE ARCHITECTURE

AUBURN HILLS 15TH ADDITION - PHASE 2A
AUBURN HILLS CT.
STA 0+00 TO STA 3+61.63

PROJECT NUMBER: 47283931
DESIGN: AEO, TMS
APPROVED: DATE 05/05
SCALE: Noted
SHEET: 9 OF 25

Auburn15/PH2A/Str3 04-11-E097