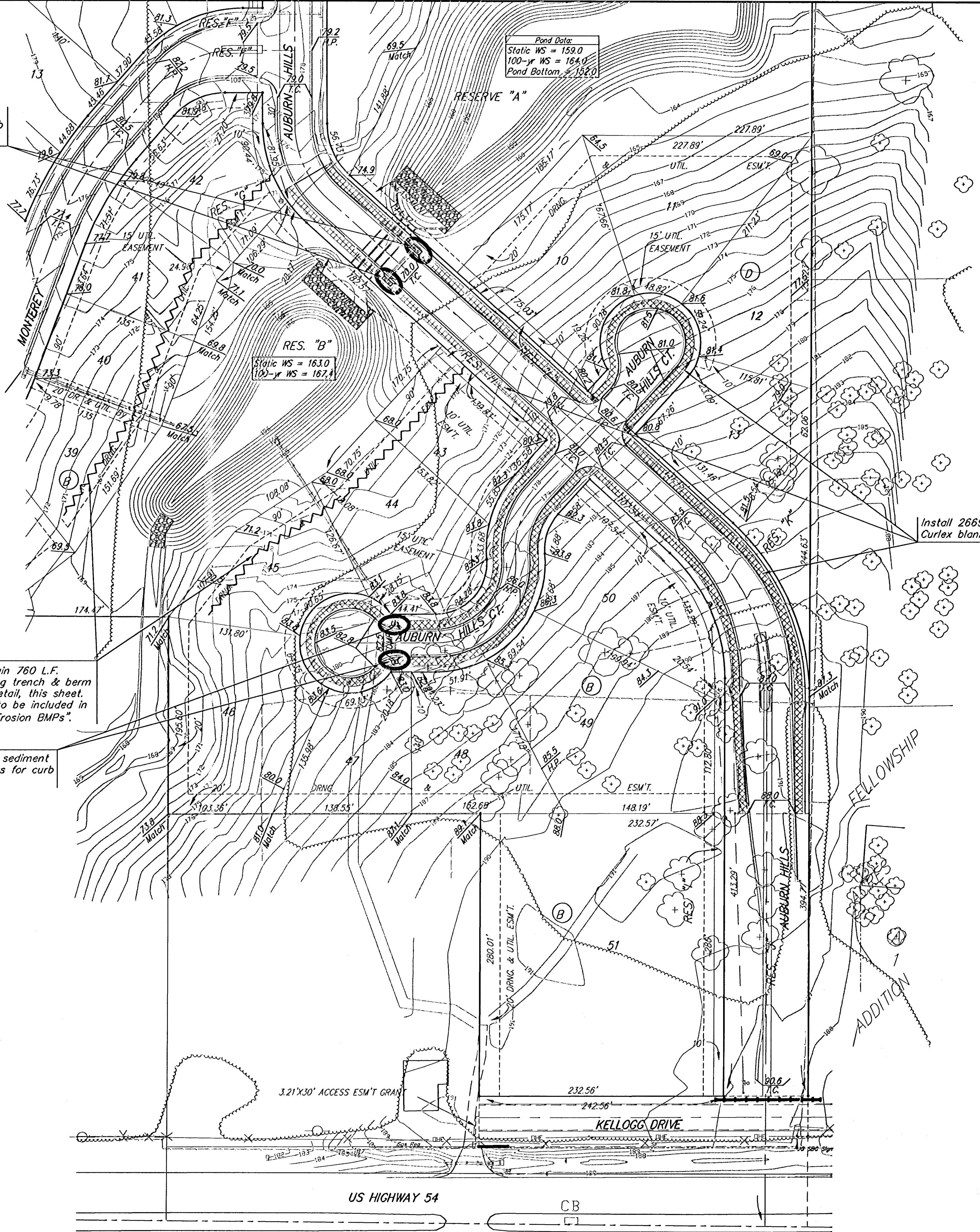


Install sediment barriers for curb inlets.



Pond Data:
 Static WS = 159.0
 100-yr WS = 164.0
 Pond Bottom = 152.0

RES. "B"
 Static WS = 163.0
 100-yr WS = 167.1

Scale: 1" = 60'

EROSION CONTROL PLAN LEGEND
 (Installation Details Found in the SWP2 Plan)

- LIGHT STONE RIP-RAP
- DROP INLET PROTECTION
- CURB INLET PROTECTION
- STRAW BALE BARRIERS
- SILT FENCING
- EARTH DIKES
- CURLEX BLANKET

NO SCALE

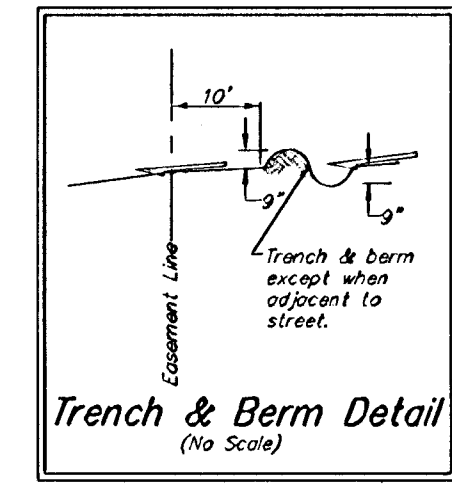
Maintain one existing construction entrance onto existing paved roadway per detail, sheet 23.

Remove trees ONLY as necessary for construction. Cost of removal to be incidental to lump sum bid item "Site Clearing & Restoration".

NOTE: Contractor shall remove & replace existing erosion control measures as necessary for construction. Contractor shall be required to maintain all on-site erosion control items until final acceptance by the City of Wichita.

Maintain 760 L.F. existing trench & berm per detail, this sheet. Cost to be included in "Soil Erosion BMPs".

Install sediment barriers for curb inlets.



EROSION CONTROL MEASURE	UNITS	QUANTITY
SILT FENCE	L.F.	0
RIPRAP (Maintain)	S.Y.	0
DROP INLET BARRIER	EA.	0
CURB INLET BARRIER	EA.	4
STRAW BALE DITCH CHECK	EA.	0
EARTHEN DIKES (Maintain)	L.F.	Maintain
CURLEX	S.Y.	2669
POND E.C. BLANKET	S.Y.	0
Construction Entrance	EA.	Maintain

QUANTITIES ARE FOR INFORMATION ONLY
 CONTRACTOR SHALL VERIFY QUANTITIES PER FINAL BID QUANTITY SHEET.

Baughman ENGINEERING | SURVEYING | PLANNING | LANDSCAPE ARCHITECTURE

AUBURN HILLS 15TH ADDITION - PHASE 2A
EROSION CONTROL PLAN
 STREET IMPROVEMENTS

PROJECT NUMBER: 472-93931
 DESIGN: TMS
 DRAWN: TMS
 APPROVED: DATE 04/05

SCALE: Noted
 SHEET: **15 OF 25**

Auburn15/StrECP/plan 04-11-ED097