

# AVALON PARK 3RD

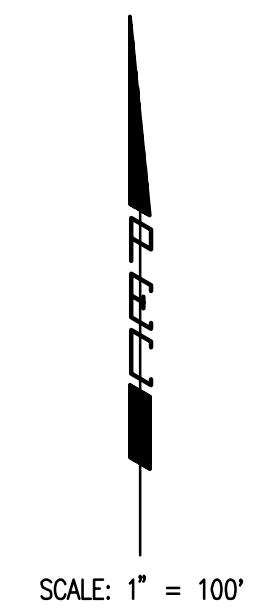
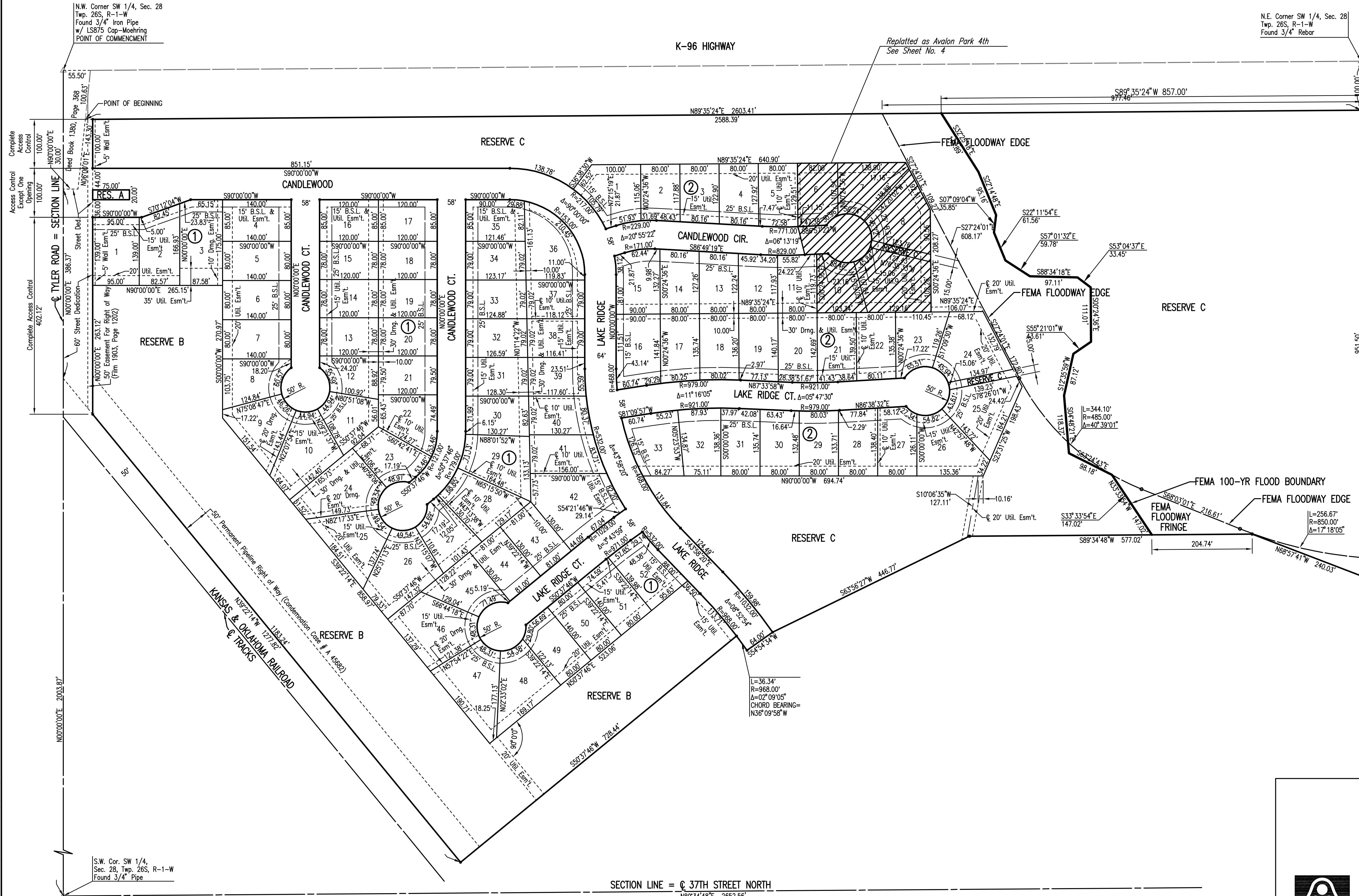
AN ADDITION TO WICHITA,  
SEDGWICK COUNTY, KANSAS

K-96 HIGHWAY

Replatted as Avalon Park 4th  
See Sheet No. 4

N.E. Corner SW 1/4, Sec. 28  
Twp. 26S, R-1-W  
Found 3/4" Rebar

N.W. Corner SW 1/4, Sec. 28  
Twp. 26S, R-1-W  
Found 3/4" Iron Pipe  
w/ LS875 Cap-Moehring  
POINT OF COMMENCEMENT



Served 06-08-2007 1:31:34 PM by BEJ  
 Plot Scale 1:100 06-11-2007 3:17:52 PM by BEJ  
 J:\SENTOUT\2007\07150\2007-06-11 to City\Sanitary Sewer\DWG 03-AvalonPark3rd

S.W. Cor. SW 1/4,  
Sec. 28, Twp. 26S, R-1-W  
Found 3/4" Pipe

SECTION LINE = 37TH STREET NORTH  
N89°34'48"E 2652.56'

No.	Revision	By	Date
LATERAL 26, MAIN 19 OF THE SOUTHWEST INTERCEPTOR SEWER <b>AVALON PARK 3RD</b> JAMES L. ARMOUR, P.E. - CITY ENGINEER CITY OF WICHITA PROJECT NO. 468-84216			
<b>Professional Engineering Consultants, P.A.</b> 303 S. TOPEKA • WICHITA, KANSAS 67202 316-262-2691 • FAX 316-262-3003			
Designed by	MDK	Job No.	35-07150-1-042
Drawn by		Date	April 2007
			Sht. 3 of 19

