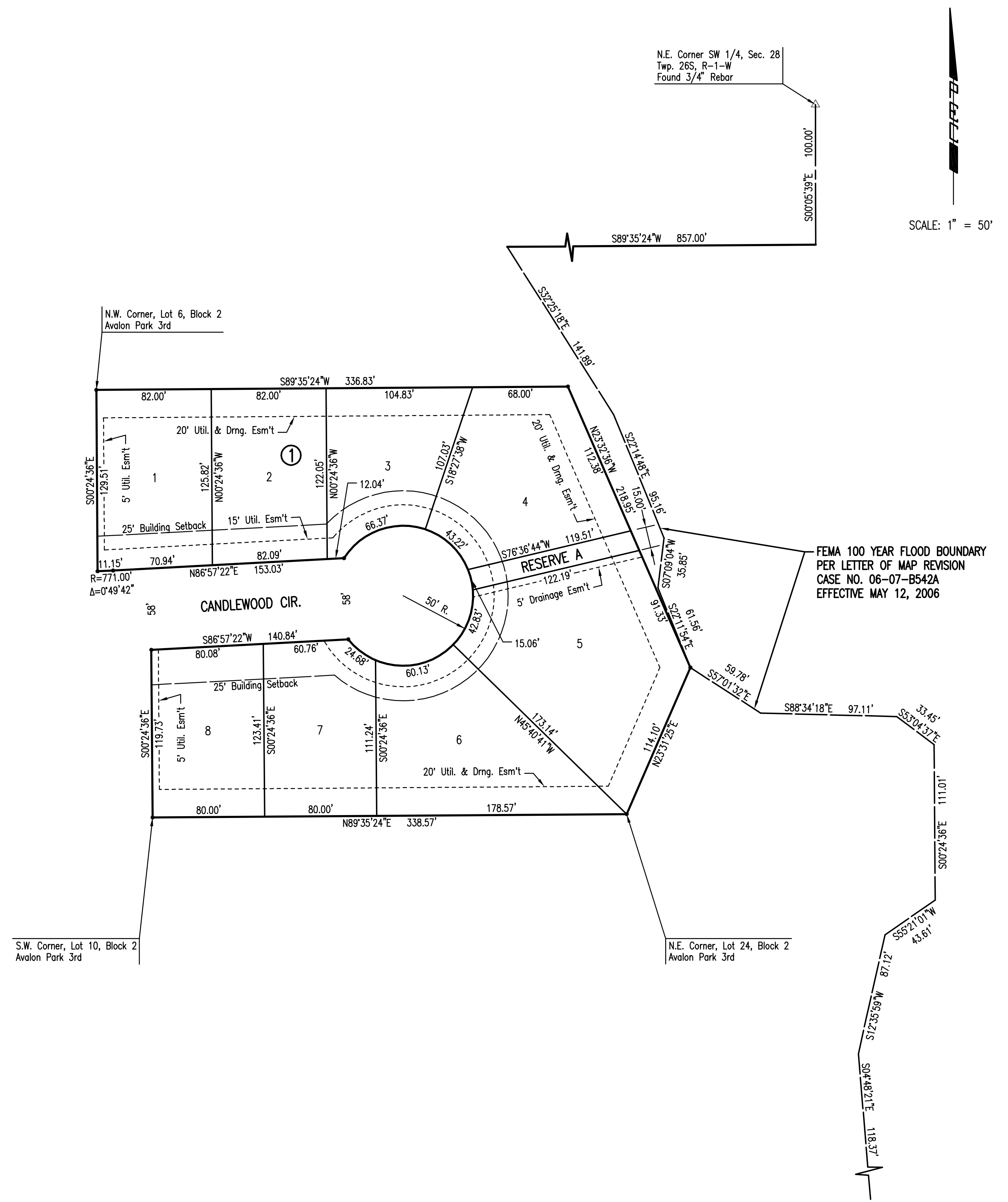
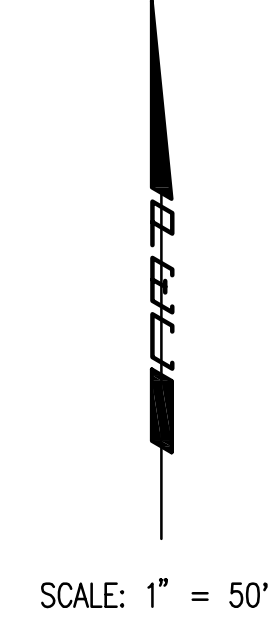


# AVALON PARK 4TH

AN ADDITION TO WICHITA,  
SEDGWICK COUNTY, KANSAS



N.E. Corner SW 1/4, Sec. 28  
Twp. 26S, R-1-W  
Found 3/4" Rebar



SCALE: 1" = 50'

FEMA 100 YEAR FLOOD BOUNDARY  
PER LETTER OF MAP REVISION  
CASE NO. 06-07-B542A  
EFFECTIVE MAY 12, 2006

S.W. Corner, Lot 10, Block 2  
Avalon Park 3rd

N.E. Corner, Lot 24, Block 2  
Avalon Park 3rd

Saved: 06-08-2007 2:00:36 PM by JLN  
 Plot Scale: 1:50 06-11-2007 3:15:39 PM by BEJ  
 J:\SENT001\2007\07150\2007-06-11 to City\Sanitary Sewer\DWG\04-AvalonPark4th

	Revision				
No.		By		Date	
<b>LATERAL 26, MAIN 19</b> <b>OF THE SOUTHWEST INTERCEPTOR SEWER</b> <b>AVALON PARK 4TH PLAT</b> JAMES L. ARMOUR, P.E. - CITY ENGINEER CITY OF WICHITA PROJECT NO. 468-84216					
<b>Professional Engineering Consultants, P.A.</b> 303 S. TOPEKA • WICHITA, KANSAS 67202 316-262-2691 • FAX 316-262-3003					
Designed by	MDK	Job No.	35-07150-1-042		
Drawn by		Date	April 2007	Sht. 4 of 19	

