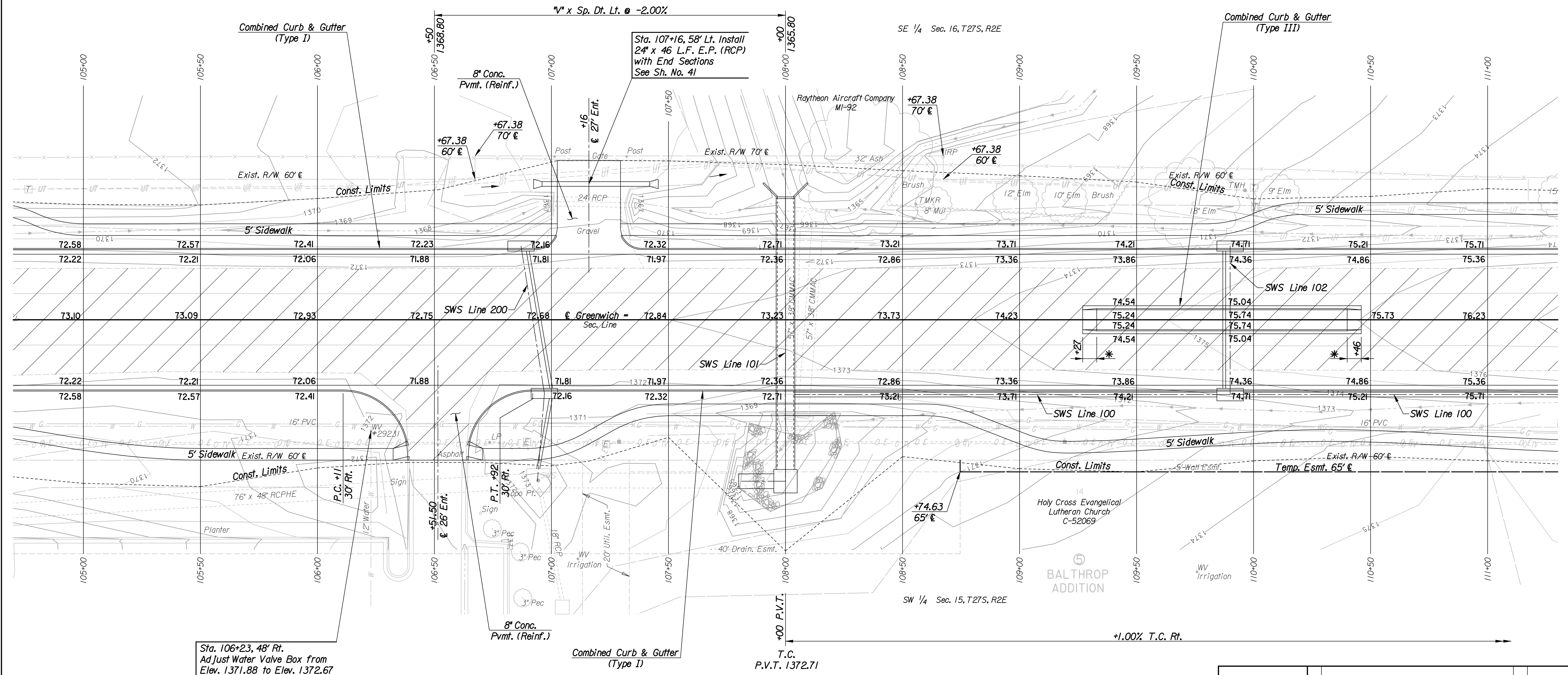
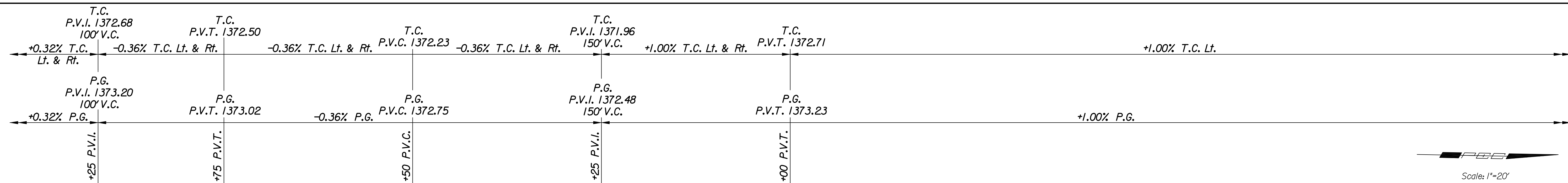


DSNR: JPS OPER: SVB SCALE: 1"=20' I:/2006/06471/PLAN/06471-Plan 105.DGN 04-23-2007 16:00:00 LAST REV: 5-31-2007 BY: svb



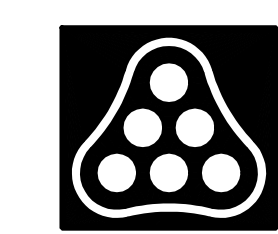
Sta. 106+23, 48' Rt.
Adjust Water Valve Box from
Elev. 1371.88 to Elev. 1372.67

- UTILITIES**
- Cable TV Cox Communications
 - Gas Kansas Gas Service
 - Power Westar Energy
 - Telephone AT&T
 - Water Wichita Water & Sewer Dept.

REMOVAL OF EXISTING STRUCTURES *		
STATION	SIDE	ITEM
107+16	Lt.	24" RCP with End Sects.
108+03	Cln.	57" x 38" CMMAC with End Sects.
108+11	Cln.	57" x 38" CMMAC with End Sects.

* For Information Only

* 6' Transition from Combined Curb & Gutter (Type III) to no curb.



No.	Revision	By	Date
GREENWICH ROAD			
PLAN			
STA. 105+00 TO STA. 111+00			
JAMES L. ARMOUR, P.E.—CITY ENGINEER CITY OF WICHITA PROJECT NO. 472-84435			
Professional Engineering Consultants, P.A.			
303 S. TOPEKA • WICHITA, KANSAS 67202 316-262-2691 • FAX 316-262-3003			
Designed by	JPS	Job No.	06471
Drawn by	SVB	Date	June, 2007
			Sht. 5 of 97