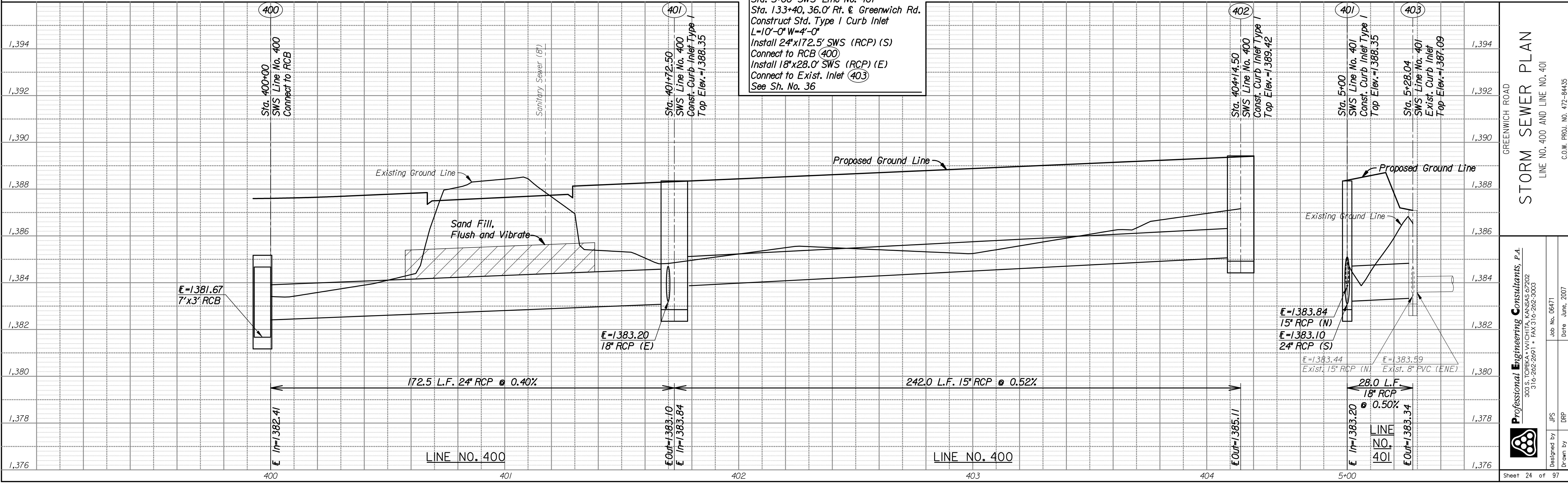
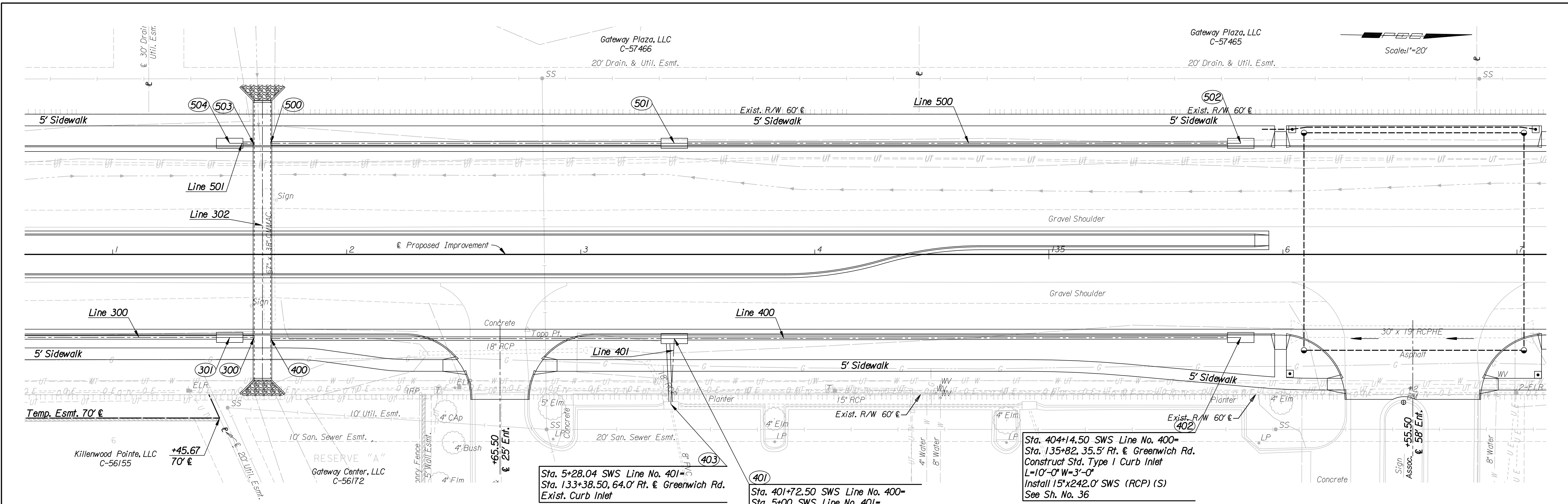


DSNR: JPS OPER: DRP SCALE: 1"=20'  
 I:/2006/06471/SWS PLAN PROFILE/SWS PLAN PROFILE-SWS400.DGN LAST REV: 5-31-2007 BY: svb



Sta. 5+28.04 SWS Line No. 401-  
 Sta. 133+38.50, 64.0' Rt. & Greenwich Rd.  
 Exist. Curb Inlet

Sta. 401+72.50 SWS Line No. 400-  
 Sta. 5+00 SWS Line No. 401-  
 Sta. 133+40, 36.0' Rt. & Greenwich Rd.  
 Construct Std. Type I Curb Inlet  
 L=10'-0" W=4'-0"  
 Install 24"x172.5' SWS (RCP) (S)  
 Connect to RCB (400)  
 Install 18"x28.0' SWS (RCP) (E)  
 Connect to Exist. Inlet (403)  
 See Sh. No. 36

Sta. 404+14.50 SWS Line No. 400-  
 Sta. 135+82, 35.5' Rt. & Greenwich Rd.  
 Construct Std. Type I Curb Inlet  
 L=10'-0" W=3'-0"  
 Install 15"x242.0' SWS (RCP) (S)  
 See Sh. No. 36

STORM SEWER PLAN  
 LINE NO. 400 AND LINE NO. 401

Professional Engineering Consultants, P.A.  
 300 S. TOPEKA AVENUE, KANSAS CITY, MO 64108  
 316.262.2291 • FAX 316.262.6060  
 Job No. 06471 Date June, 2007  
 Designed by JPS  
 Drawn by DRP  
 Sheet 24 of 97