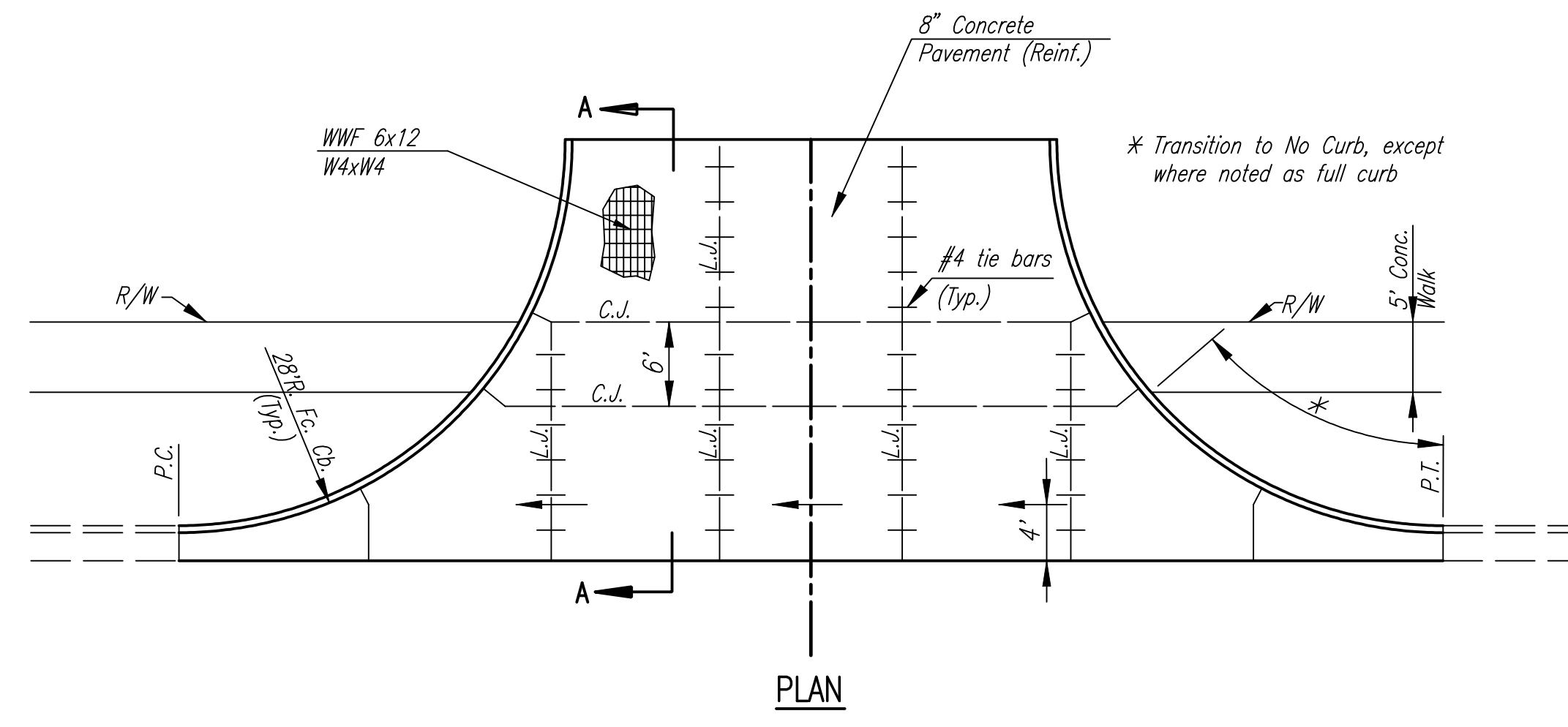
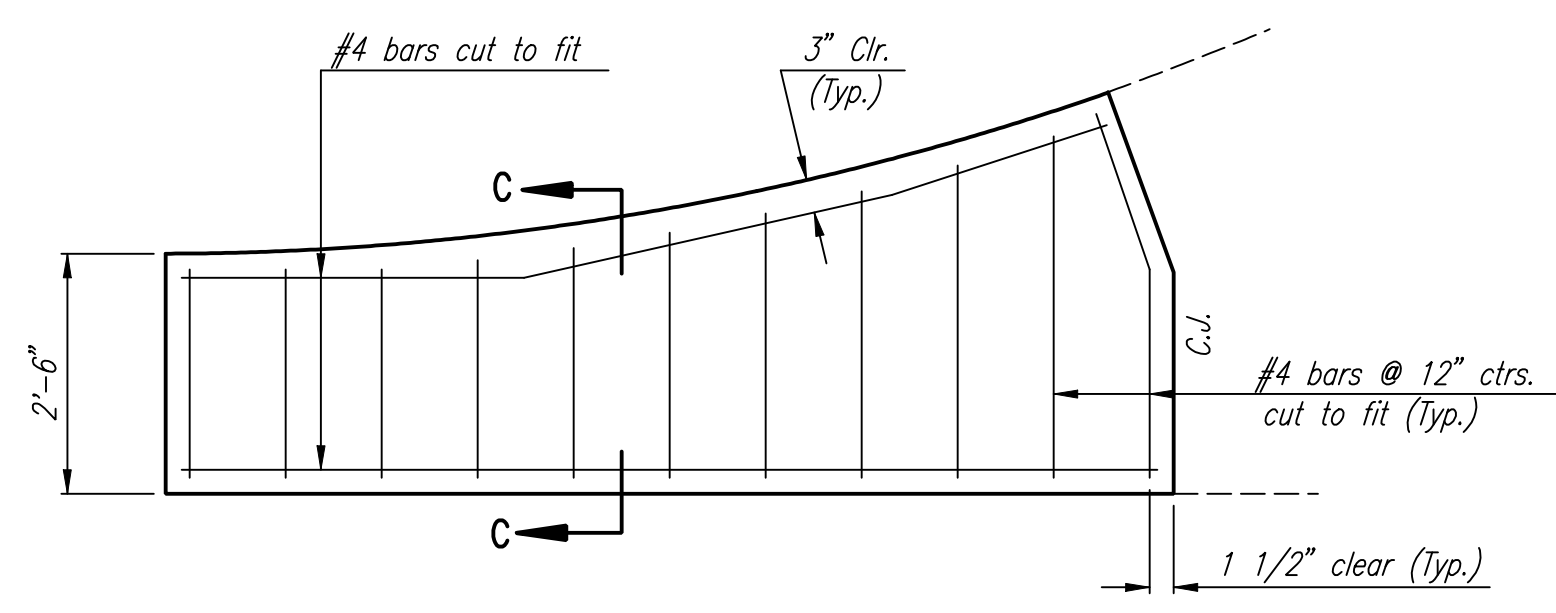


DSNR: I:/2006/06471/STANDARDS/06471-VALGUTDL.DGN 8-25-2005 13:33:14 LAST REV: 6-1-2007 BY: svb

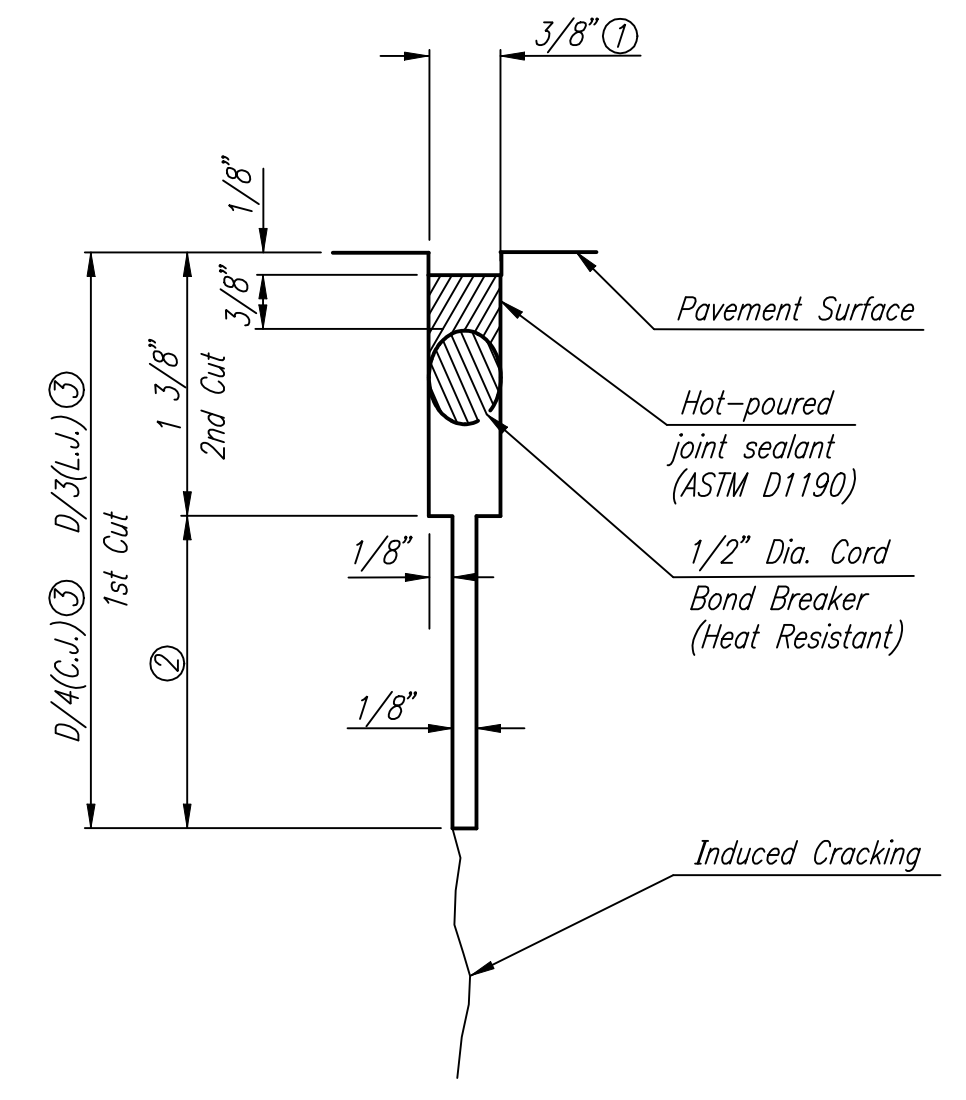


PLAN



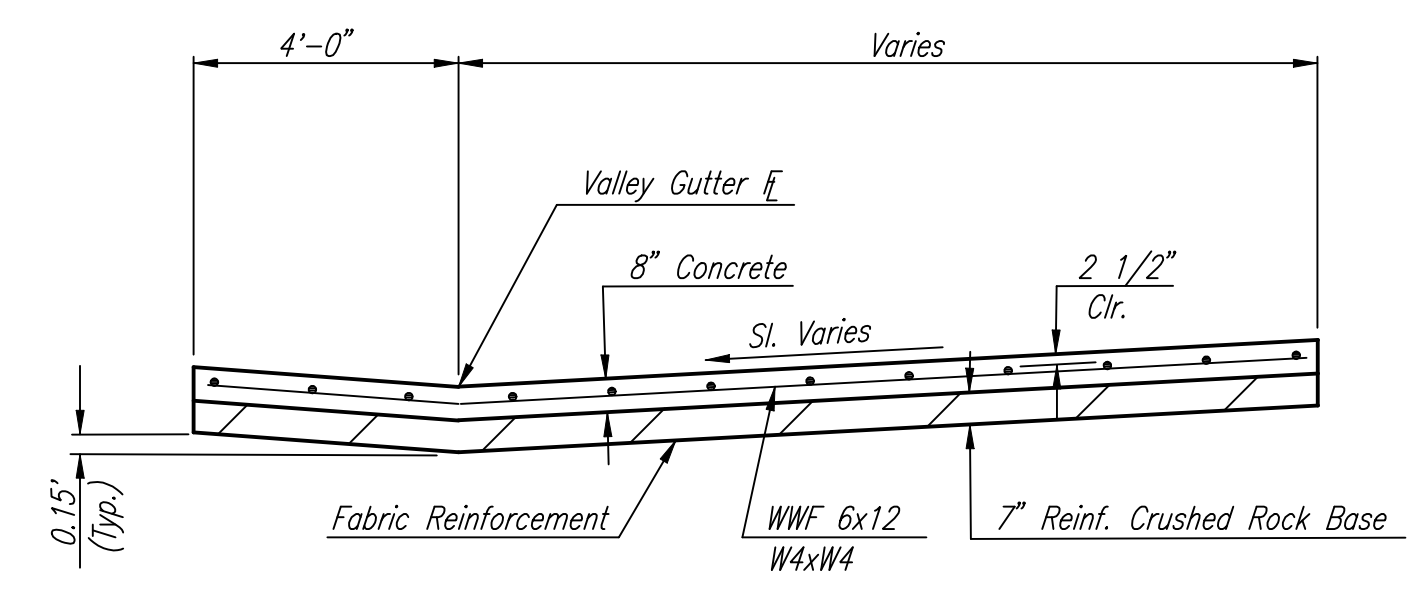
WING REINFORCING DETAIL

NOTE: OMIT WIRE FABRIC REINFORCING IN THIS SECTION.



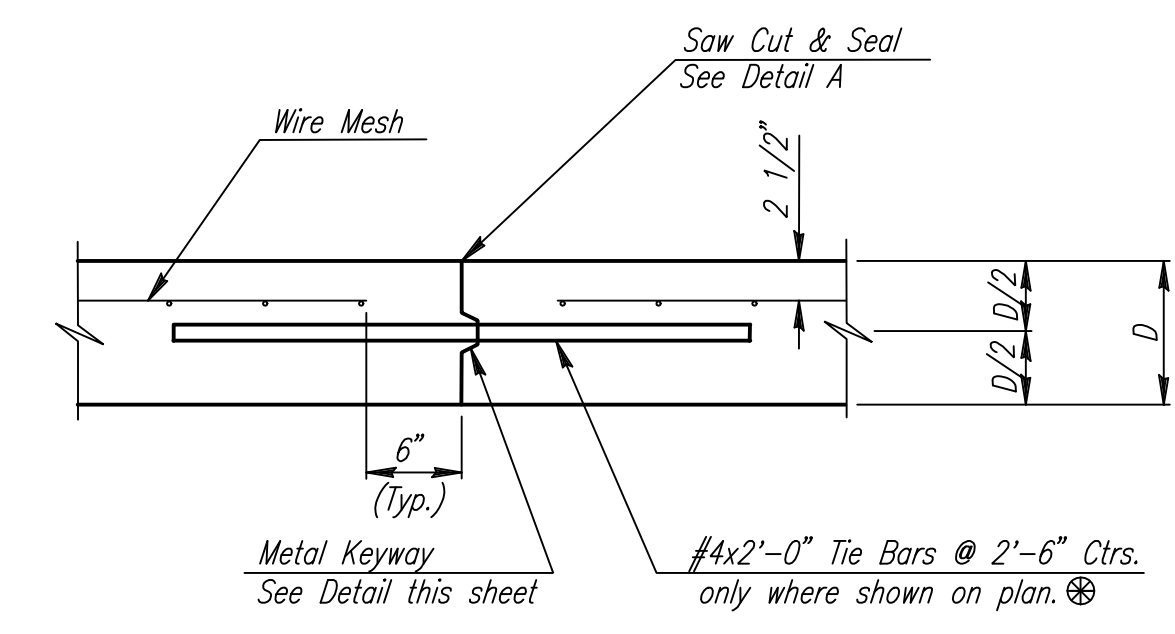
DETAIL A

- ① To be accomplished in 2 cuts for Longitudinal Joints and Contraction Joints. Initial cut to be 1/8" wide.
- ② Eliminate bottom of cut when metal keyway is used as part of Longitudinal or Transverse Construction Joint and at Doweled Construction Joint Locations.
- ③ 1 1/2" Minimum

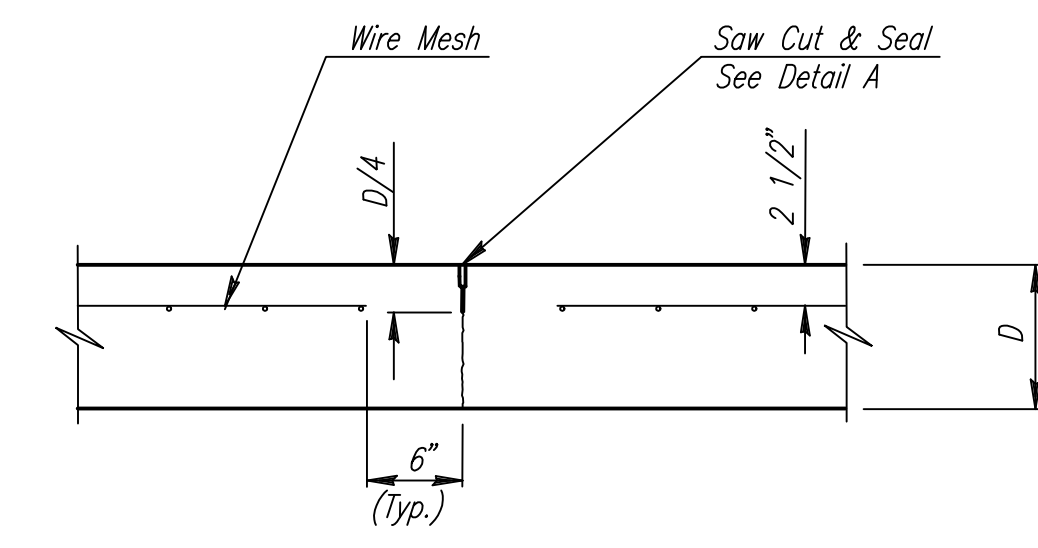


SECTION A-A

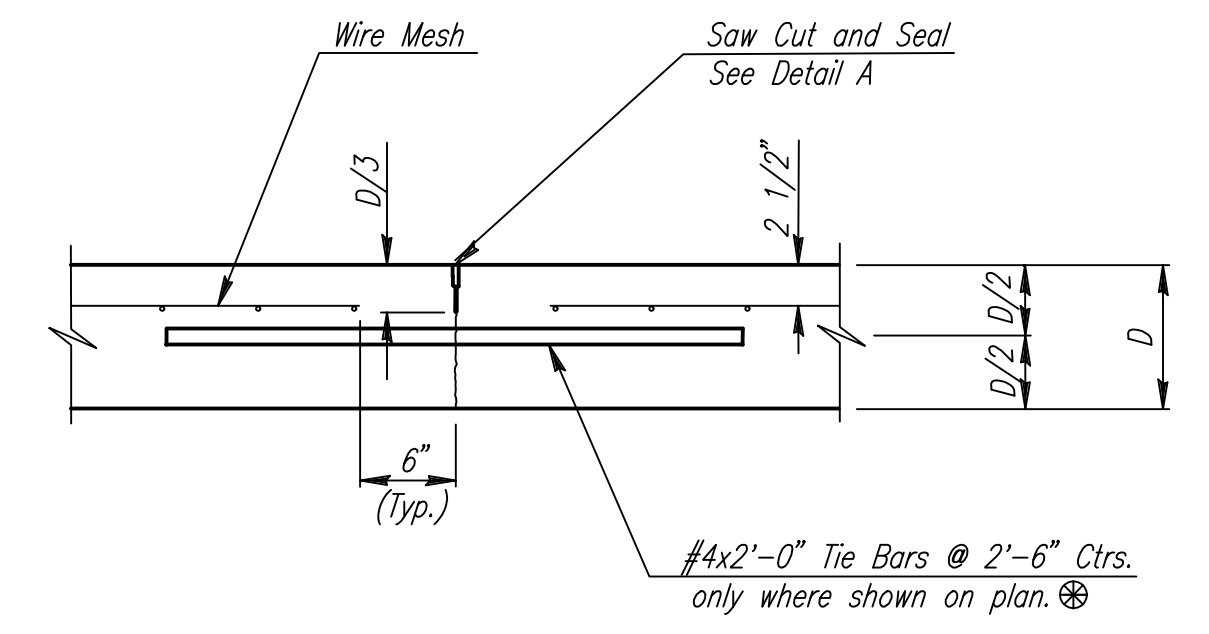
NOTE: OMIT REINFORCING MESH AT ALL JOINTS
 NOTE: ALL CONCRETE VALLEY GUTTER REINFORCEMENT SHALL BE ADEQUATELY SUPPORTED BY BAR CHAIRS IN THE REQUIRED POSITION UNLESS APPROVED OTHERWISE BY THE ENGINEER.



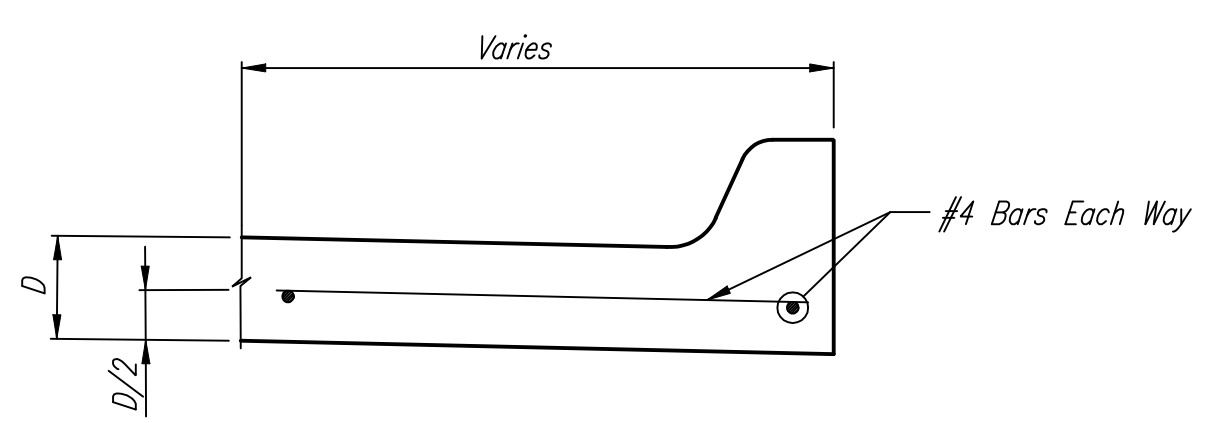
LONGITUDINAL CONSTRUCTION JOINT DETAIL
 REINFORCED PAVEMENT
 (TRANSVERSE SECTION)
 (ALTERNATE L.J.)



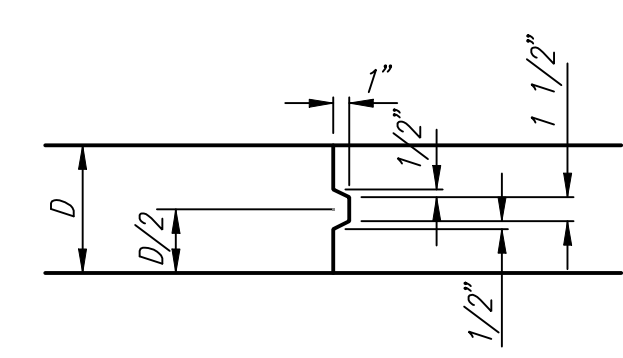
CONTRACTION JOINT DETAIL
 REINFORCED PAVEMENT
 (C.J.)



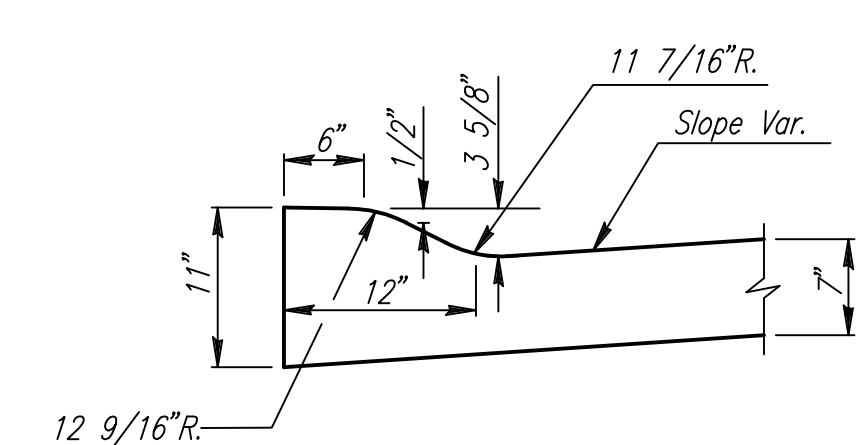
LONGITUDINAL JOINT DETAIL
 REINFORCED PAVEMENT
 (TRANSVERSE SECTION)



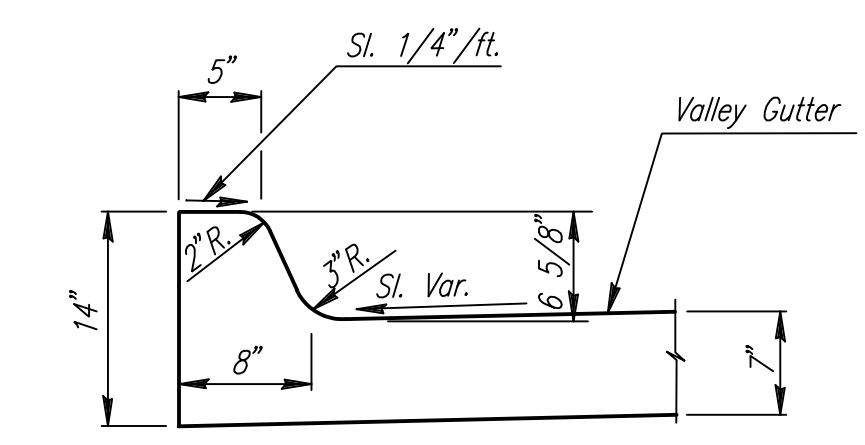
SECTION C-C



KEYWAY DETAIL

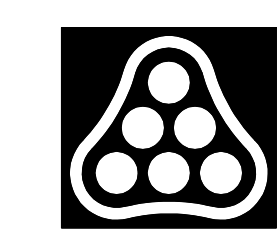


DETAIL B
 (ROLL-TYPE CURB)(3 5/8")



DETAIL C
 (STANDARD CURB)(6 5/8")

MONOLITHIC EDGE CURB



No.	Revision	By	Date
GREENWICH ROAD SPECIAL ENTRANCES FULL HEIGHT CURB JAMES L. ARMOUR, P.E.—CITY ENGINEER CITY OF WICHITA PROJECT NO. 472-84435 Professional Engineering Consultants, P.A. 303 S. TOPEKA • WICHITA, KANSAS 67202 316-262-2691 • FAX 316-262-3003			
Designed by	Job No.	Sht. 32 of 97	
Drawn by	Date	June, 2007	