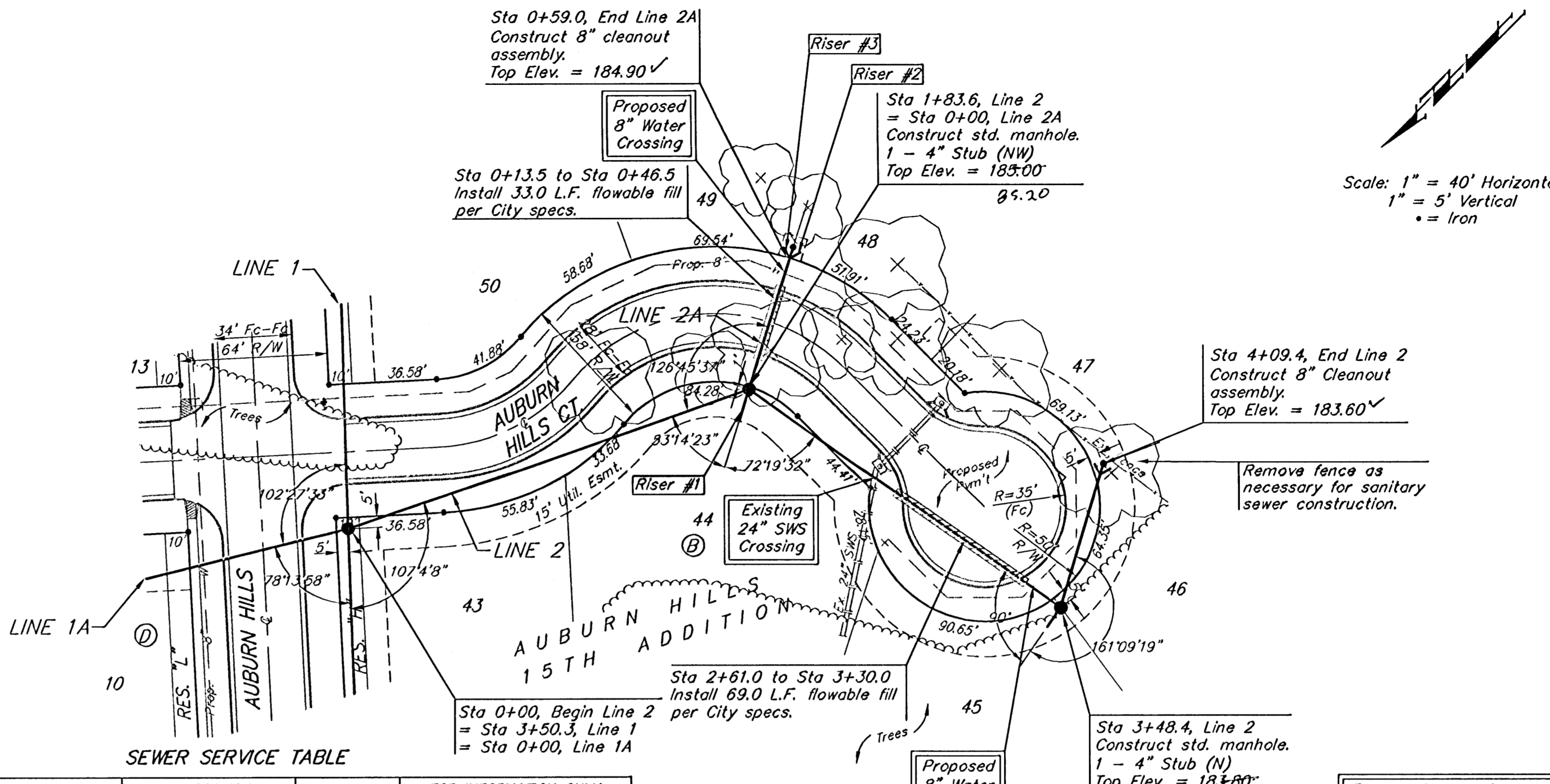
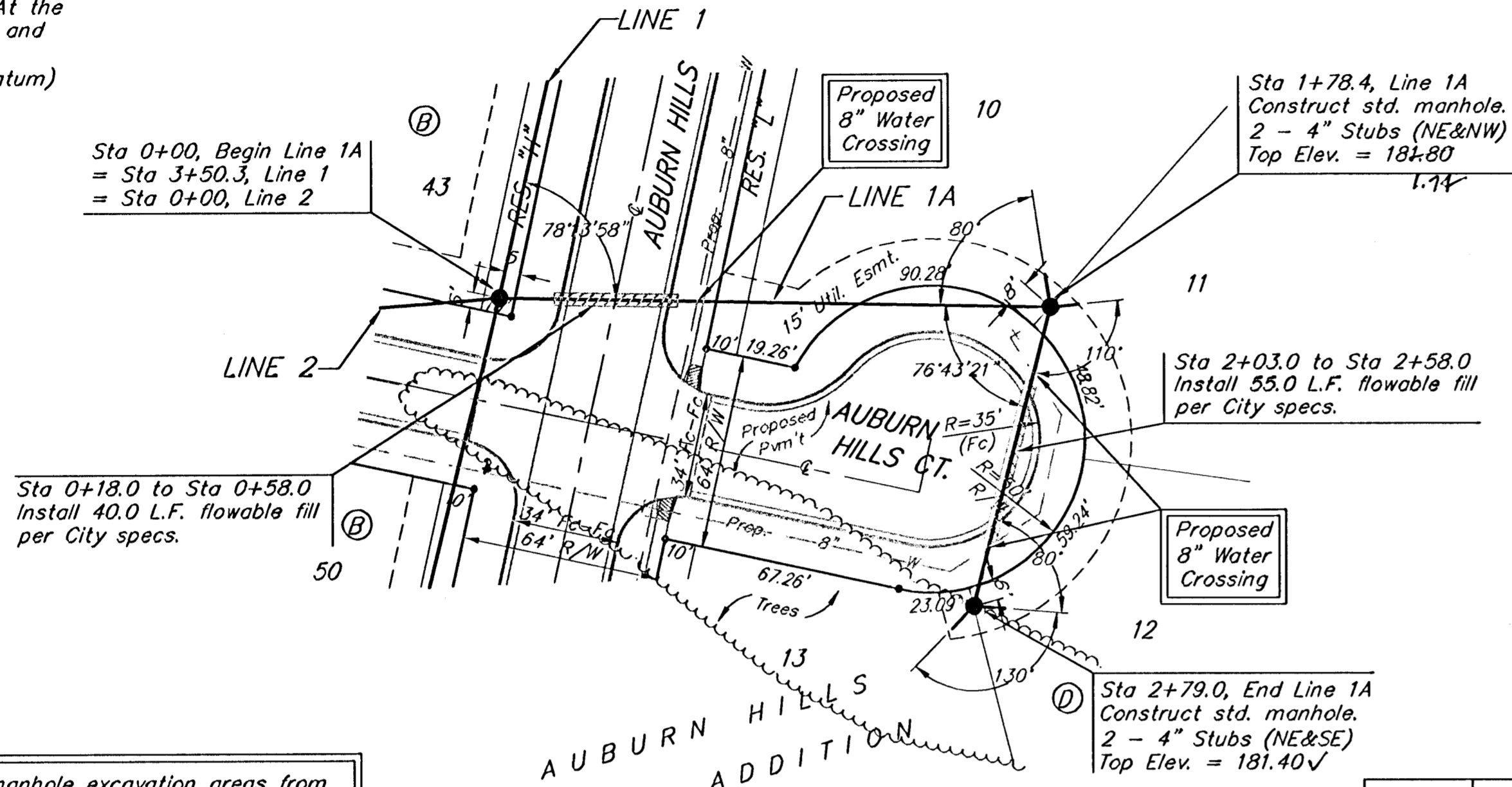


BENCHMARK:

City Disc In T.C. Adj. to F.H.
17.5' North of Monterey. At the
South West Corner of Lot 10
Block C Auburn Hills 15th
Addition.
Elev. = 177.39 (City Datum)

City Disc In T.C. Adj. to F.H.
27' North of Monterey. At the
Intersection of Monterey and
Auburn Hills.
Elev. = 179.40 (City Datum)



Scale: 1" = 40' Horizontal
1" = 5' Vertical
• = Iron

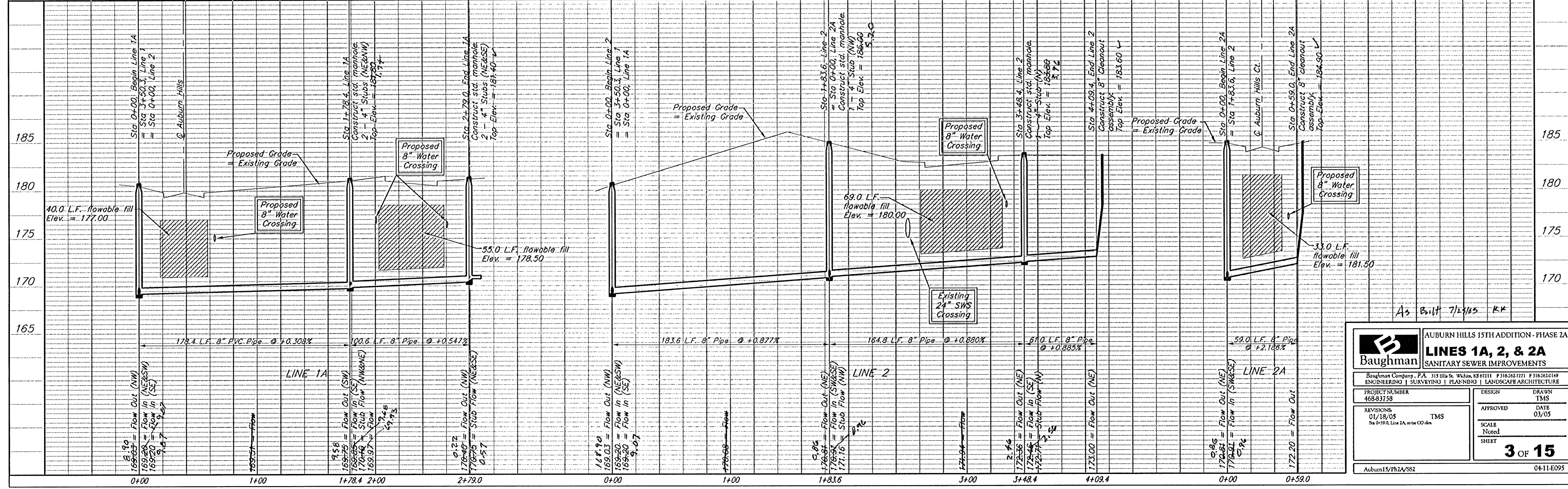
All trench and manhole excavation areas from Sta. 0+00 to Sta. 1+78.4, Line 1A and Sta. 0+00 to Sta. 4+09.4, Line 2 shall be backfilled with sand, except where Flowable Fill is required. The sand backfill shall be within two feet of existing grade and shall be water-jetted and vibrated during backfilling. All costs shall be subsidiary to pipe cost.

Remove trees only as necessary for sanitary sewer construction and only with permission of Developer or Baughman Co. Cost of removal to be incidental to lump sum bid item "Site Clearing & Restoration".

SEWER SERVICE TABLE

NUMBER	TYPE	LOCATION			FOR INFORMATION ONLY	
		LOT NO.	BLOCK NO.	LINE NO.	STATION \ DIRECTION	APPROXIMATE LENGTH 4" PIPE VERTICAL HORIZONTAL
1	4" Stub w/ Riser	44	B	2	1+83.6/RT	10.5' 14'
2	4" Riser on Cleanout	48	B	2A	0+59/RT	7.5' 5'
3	4" Riser on Cleanout	49	B	2A	0+59/Lt	7.5' 5'

NOTE: Vertical Riser Pipe shall be extended to 2' minimum above ground water elevation and 4' maximum below proposed ground elevation.



Baughman
AUBURN HILLS 15TH ADDITION - PHASE 2A
LINES 1A, 2, & 2A
SANITARY SEWER IMPROVEMENTS

PROJECT NUMBER: 468-3758
DESIGN: TMS
DRAWN: TMS
DATE: 03/05

REVISIONS: 01/18/05 TMS
SCALE: Noted
SHEET: 3 OF 15

Auburn15/Ph2A/SS2 04-11-E095