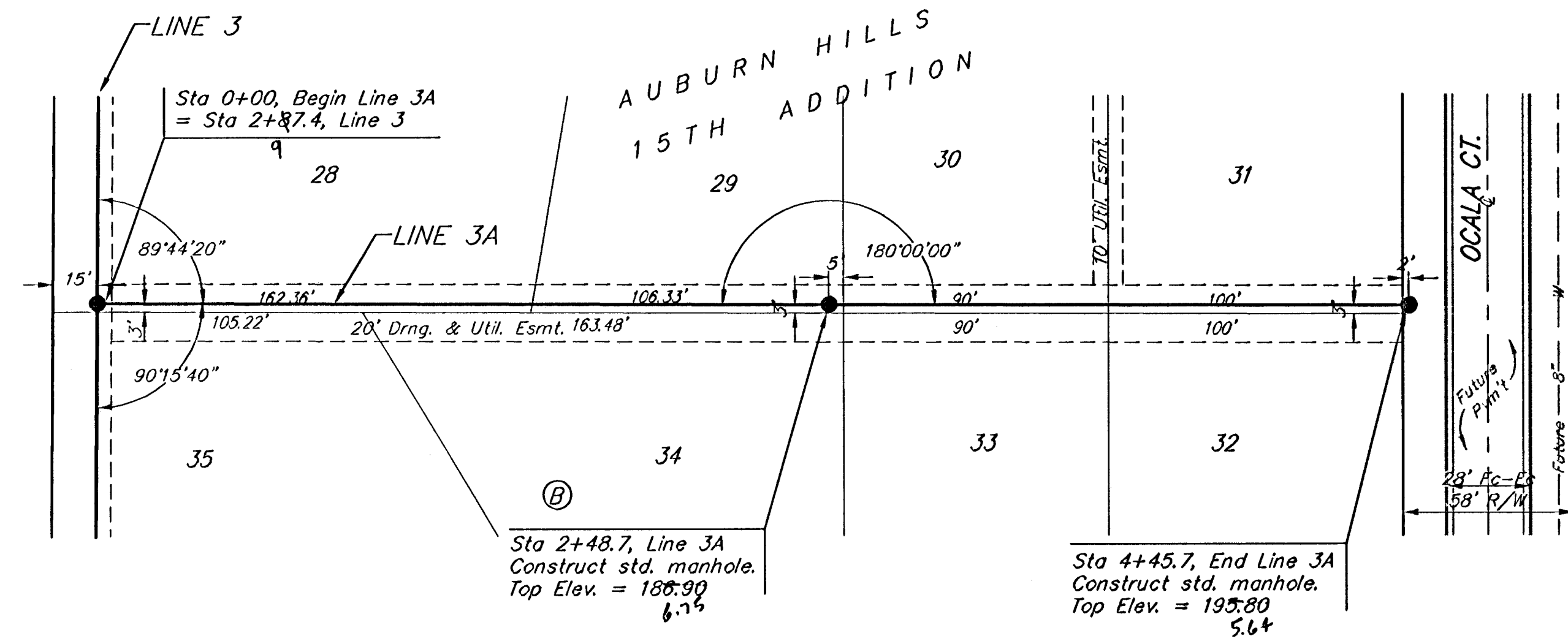
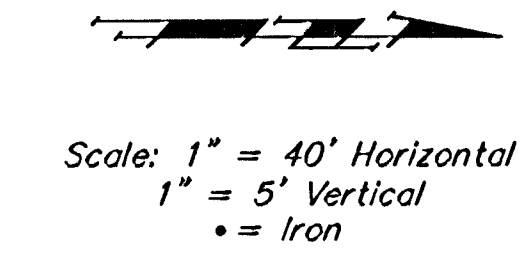


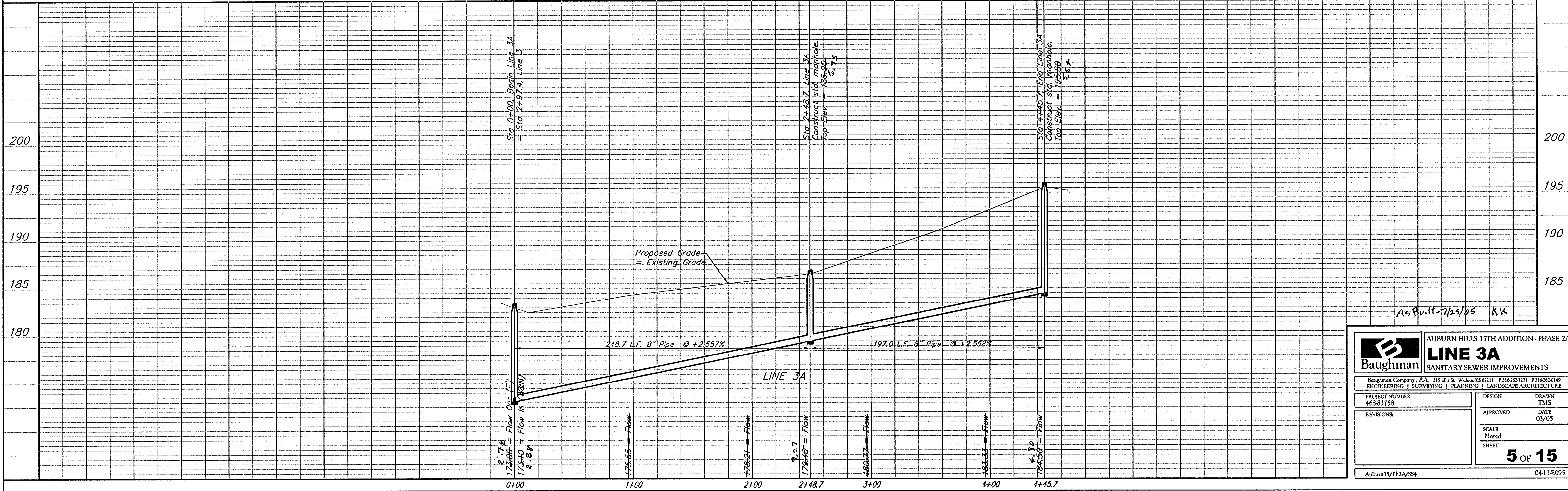
BENCHMARK:

City Disc In T.C. Adj. to F.H.
17.5' North of Monterey. At the
South West Corner of Lot 10
Block C Auburn Hills 15th
Addition.
Elev. = 177.39 (City Datum)

City Disc In T.C. Adj. to F.H.
27' North of Monterey. At the
Intersection of Monterey and
Auburn Hills.
Elev. = 179.40 (City Datum)



Remove trees only as necessary
for sanitary sewer construction
and only with permission of
Developer or Baughman Co.
Cost of removal to be incidental
to lump sum bid item "Site
Clearing & Restoration".



Baughman		AUBURN HILLS 15TH ADDITION - PHASE 2A	
		LINE 3A	
		SANITARY SEWER IMPROVEMENTS	
Baughman Company, P.A. 315 5th St. W. Kansas, KS 67111 P 316.262.7171 F 316.262.0149			
ENGINEERING SURVEYING PLANNING LANDSCAPE ARCHITECTURE			
PROJECT NUMBER 468-83759	DESIGN TMS	DRAWN TMS	
REVISIONS:	APPROVED	DATE 03/05	
	SCALE Noted		
			5 OF 15
Auburn15/Ph2A/SS4		04-11-E095	