

POND OUTLET AND CHANNEL PROTECTION SEE DETAILS SHEET 8

STAKING CONTROL POINTS

NUMBER	NORTHING	EASTING	ELEVATION
2000	21299.17	21166.17	1339.00
2001	21318.16	21199.72	1337.00
2002	21341.71	21244.33	1337.00
2003	21365.71	21258.79	1337.00
2004	21416.69	21270.35	1337.00
2005	21452.74	21270.37	1337.00
2006	21564.66	21239.39	1337.00
2007	21622.13	21237.85	1337.00
2008	21693.52	21246.87	1337.00
2009	21764.58	21262.83	1337.00
2010	21819.92	21254.77	1337.00
2011	21943.63	21264.61	1337.00
2012	21976.08	21217.61	1337.00
2013	21897.44	21169.29	1337.00
2014	21822.98	21129.21	1337.00
2015	21744.84	21092.29	1337.00
2016	21664.45	21064.06	1337.00
2017	21564.31	21044.62	1337.00
2018	21491.02	21040.71	1337.00
2019	21399.82	21057.22	1337.00
2020	21376.46	21068.44	1337.00
2021	21342.38	21093.36	1337.00
2022	21315.57	21141.99	1337.00
2023	21300.47	21141.20	1339.00
2024	21314.27	21166.95	1337.00
2025	21328.81	21192.85	1334.00
2026	21347.30	21228.97	1334.00
2027	21371.29	21244.68	1334.00
2028	21418.38	21255.35	1334.00
2029	21450.49	21255.36	1334.00
2030	21562.47	21224.44	1334.00
2031	21622.87	21222.83	1334.00
2032	21696.11	21232.08	1334.00
2033	21764.72	21247.81	1334.00
2034	21817.57	21239.96	1334.00
2035	21947.32	21251.10	1334.00
2036	21956.41	21217.70	1334.00
2037	21934.92	21222.14	1328.00
2038	21889.94	21182.29	1334.00
2039	21815.87	21142.42	1334.00
2040	21739.25	21106.21	1334.00
2041	21659.26	21078.21	1334.00
2042	21562.86	21059.57	1334.00
2043	21404.63	21071.55	1334.00
2044	21385.60	21080.69	1334.00
2045	21352.94	21104.01	1334.00
2046	21327.62	21129.12	1334.00
2047	21323.21	21144.39	1333.20
2048	21322.12	21165.36	1333.20
2049	21345.91	21187.23	1328.00
2050	21360.08	21216.29	1328.00
2051	21378.61	21227.88	1328.00
2052	21420.40	21237.35	1328.00
2053	21447.80	21237.36	1328.00
2054	21559.86	21206.50	1328.00
2055	21623.76	21204.80	1328.00
2056	21699.23	21214.33	1328.00
2057	21764.90	21229.79	1328.00
2058	21814.75	21222.18	1328.00
2059	21937.60	21231.02	1328.00
2060	21880.96	21197.90	1328.00
2061	21807.34	21158.27	1328.00
2062	21732.54	21122.92	1328.00
2063	21653.02	21095.19	1328.00
2064	21561.13	21077.50	1328.00
2065	21491.74	21055.77	1334.00
2066	21492.61	21073.84	1328.00
2067	21410.42	21088.74	1328.00
2068	21396.56	21095.40	1328.00
2069	21365.62	21116.79	1328.00
2070	21342.85	21139.37	1328.00

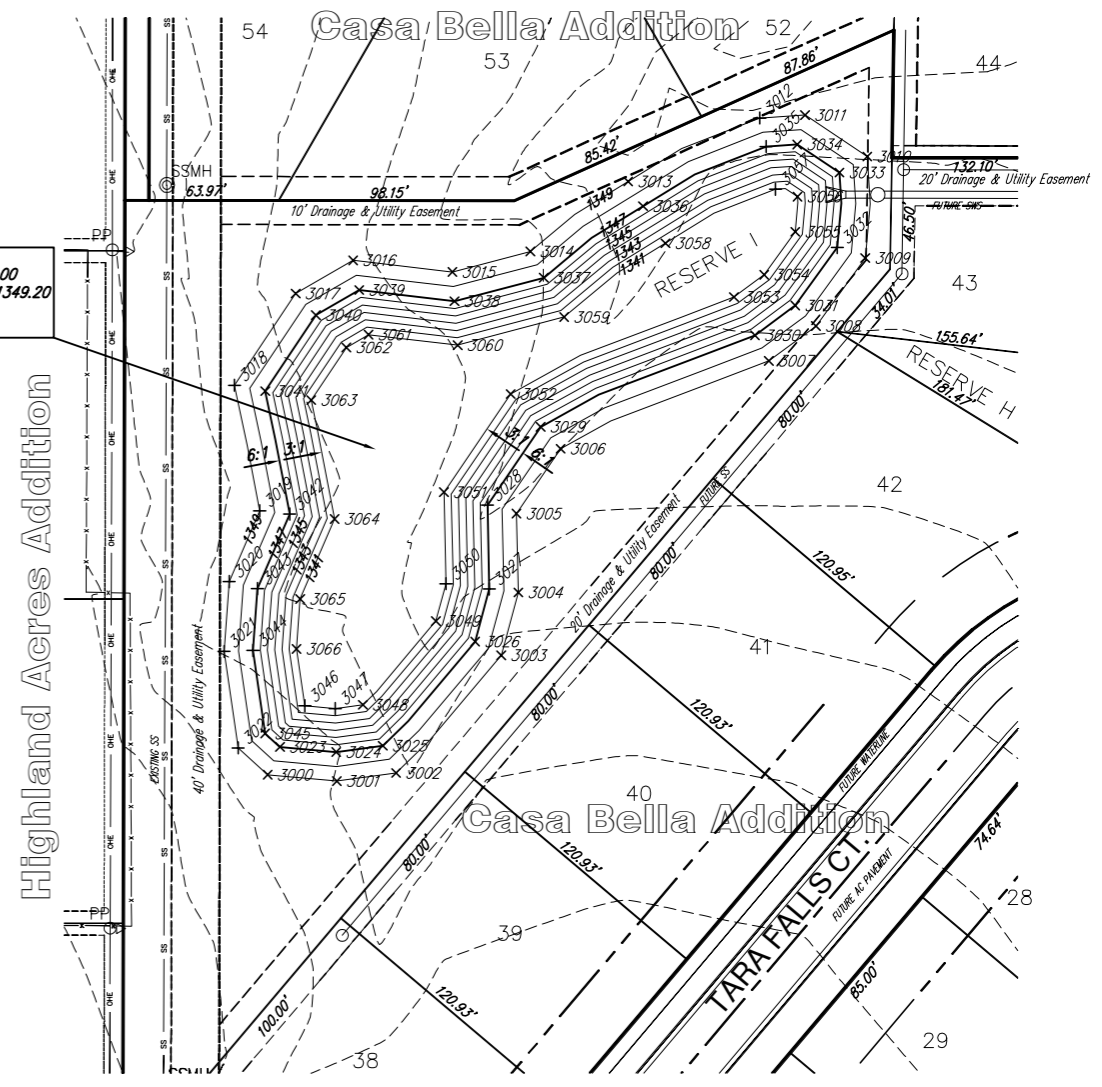
POND C DATA
 STATIC POOL ELEV = 1334.00
 100YR WATER SURFACE = 1337.40
 Q_{in}100 = 542 cfs
 Q_{out}100 = 527 cfs

CONSTRUCT OUTLET STRUCTURE
 SEE DETAIL SHEET 15

NOTE: THE POND BOTTOM AND SIDES ARE TO BE SCARIFIED A MINIMUM OF 8 INCHES, MOISTURE CONDITIONED AND RECOMPACTED TO A MINIMUM OF 95 PERCENT OF STANDARD PROCTOR DENSITY (ASTM D-698) FROM MINUS 3 TO PLUS 3 PERCENT OF OPTIMUM MOISTURE CONTENT. ADDITIONALLY, ALL GYPSUM/CALICHE SEAMS, SANDY CLAY AND CLAY SHALE ENCOUNTERED SHOULD BE OVER-EXCAVATED A MINIMUM OF 1 FOOT AND REPLACED WITH CLAY. MINIMUM PI OF THE SOIL USED FOR THE POND LINER IS 30.



SCALE 1" = 40'



POND D DATA
 STATIC POOL ELEV = 1347.00
 100YR WATER SURFACE = 1349.20
 Q_{in}100 = 57 cfs
 Q_{out}100 = 35 cfs

STAKING CONTROL POINTS

NUMBER	NORTHING	EASTING	ELEVATION
3000	20921.87	20061.82	1349.00
3001	20919.26	20090.60	1349.00
3002	20922.62	20115.27	1349.00
3003	20971.63	20159.03	1349.00
3004	20997.77	20166.13	1349.00
3005	21030.63	20165.39	1349.00
3006	21057.66	20183.74	1349.00
3007	21094.25	20270.45	1349.00
3008	21108.75	20290.04	1349.00
3009	21137.07	20310.58	1349.00
3010	21179.35	20311.41	1349.00
3011	21196.59	20285.52	1349.00
3012	21195.36	20266.62	1349.00
3013	21168.91	20211.90	1349.00
3014	21139.80	20171.15	1349.00
3015	21131.25	20138.73	1349.00
3016	21136.10	20097.39	1349.00
3017	21122.29	20073.47	1349.00
3018	21084.09	20048.00	1349.00
3019	21031.81	20058.47	1349.00
3020	21002.31	20045.76	1349.00
3021	20973.21	20043.64	1349.00
3022	20933.08	20049.49	1349.00
3023	20933.46	20066.91	1347.00
3024	20931.33	20090.33	1347.00
3025	20933.98	20109.73	1347.00
3026	20977.33	20148.15	1347.00
3027	20999.24	20154.10	1347.00
3028	21034.20	20153.30	1347.00
3029	21066.77	20175.42	1347.00
3030	21104.87	20264.63	1347.00
3031	21117.29	20281.42	1347.00
3032	21141.45	20298.93	1347.00
3033	21172.66	20299.80	1347.00
3034	21184.35	20282.25	1347.00
3035	21183.51	20269.27	1347.00
3036	21158.64	20218.10	1347.00
3037	21128.88	20176.79	1347.00
3038	21119.06	20139.59	1347.00
3039	21123.72	20099.94	1347.00
3040	21113.30	20081.90	1347.00

NUMBER	NORTHING	EASTING	ELEVATION
3041	21081.62	20060.78	1347.00
3042	21030.45	20070.95	1347.00
3043	20999.42	20057.58	1347.00
3044	20973.65	20055.71	1347.00
3045	20939.06	20060.74	1347.00
3046	20950.59	20077.25	1341.00
3047	20949.44	20089.92	1341.00
3048	20951.01	20101.44	1341.00
3049	20985.89	20131.82	1341.00
3050	21001.44	20136.04	1341.00
3051	21039.55	20135.18	1341.00
3052	21080.44	20162.95	1341.00
3053	21120.81	20255.91	1341.00
3054	21130.11	20268.48	1341.00
3055	21148.01	20281.46	1341.00
3056	21162.63	20282.39	1341.00
3057	21165.73	20273.23	1341.00
3058	21143.23	20227.40	1341.00
3059	21112.49	20185.24	1341.00
3060	21100.79	20140.88	1341.00
3061	21105.15	20103.77	1341.00
3062	21099.81	20094.54	1341.00
3063	21077.92	20079.94	1341.00
3064	21028.41	20089.67	1341.00
3065	20995.09	20075.31	1341.00
3066	20974.30	20073.80	1341.00

**CASA BELLA ADDITION
 POND PLAN
 WICHITA, KANSAS**

Ruggles & Bohm, P.A.
 Engineering, Surveying, Land Planning

924 North Main
 Wichita, Kansas 67203
 www.rbkansas.com

(316) 264-8008
 (316) 264-4821 fax
 E-mail: info@rbkansas.com

DESIGN E/JG
 DRAWN MLP
 REVIEW
 UTILITY
 DATE Nov. 9, 2005

PROJECT NUMBER SWD #276

DRAWING FILE Pond Plan {Pond C & D}

SHEET 7 OF 32