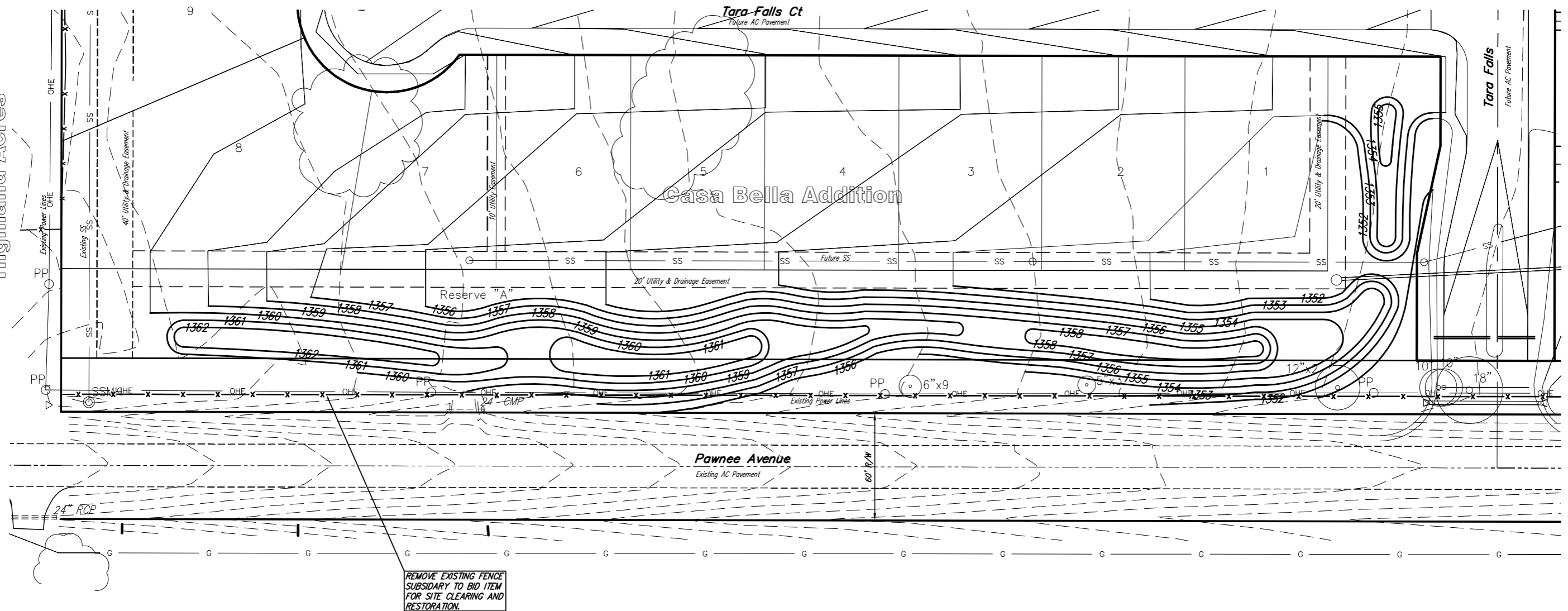


Highland Acres




BERM GRADING NOTES

- 1: ALL GRADES SHALL BE CONTOURED SMOOTHLY WITH GENTLE ROUNDING/SHAPING OF ALL AFFECTED LAND SURFACES. ABRUPT TRANSITIONS AT THE TOE OF SLOPES WHERE PROPOSED GRADES MEET EXISTING ARE NOT ACCEPTABLE.
- 2: SLOPES MAY VARY FROM 4:1 AS SHOWN. MAXIMUM SLOPE SHALL BE 3:1.
- 3: A 6" LAYER OF TOPSOIL SHALL BE PLACED ON ALL PROPOSED BERM AREAS. NOTE: THE FINISHED GRADE INDICATES THE SURFACE ELEVATION AFTER THE LAYER OF TOPSOIL HAS BEEN PLACED.
- 4: BERMS ARE TO BE SEEDED PER CITY OF WICHITA STANDARD SPECIFICATIONS FOR PERMANANT SEEDING.
- 5: EROSION CONTROL SHALL CONFORM TO ALL STATE AND LOCAL SPECIFICATIONS. SEE EROSION CONTROL PLAN SHEET 17



SCALE 1" = 30'

TREES TO BE REMOVED ONLY AS NECESSARY FOR CONSTRUCTION

CASA BELLA ADDITION BERM PLAN WICHITA, KANSAS			
 Ruggles & Bohm, P.A. Engineering, Surveying, Land Planning		DESIGN E.J.G. DRAWN MLP REVIEW UTILITY	
924 North Main Wichita, Kansas 67203 www.rbkansas.com		(316) 264-8008 (316) 264-4821 fax E-mail: info@rbkansas.com	
DRAWING FILE Berms {Berm A}	PROJECT NUMBER SWD #276	DATE Dec. 13, 2005	SHEET 32 OF 32