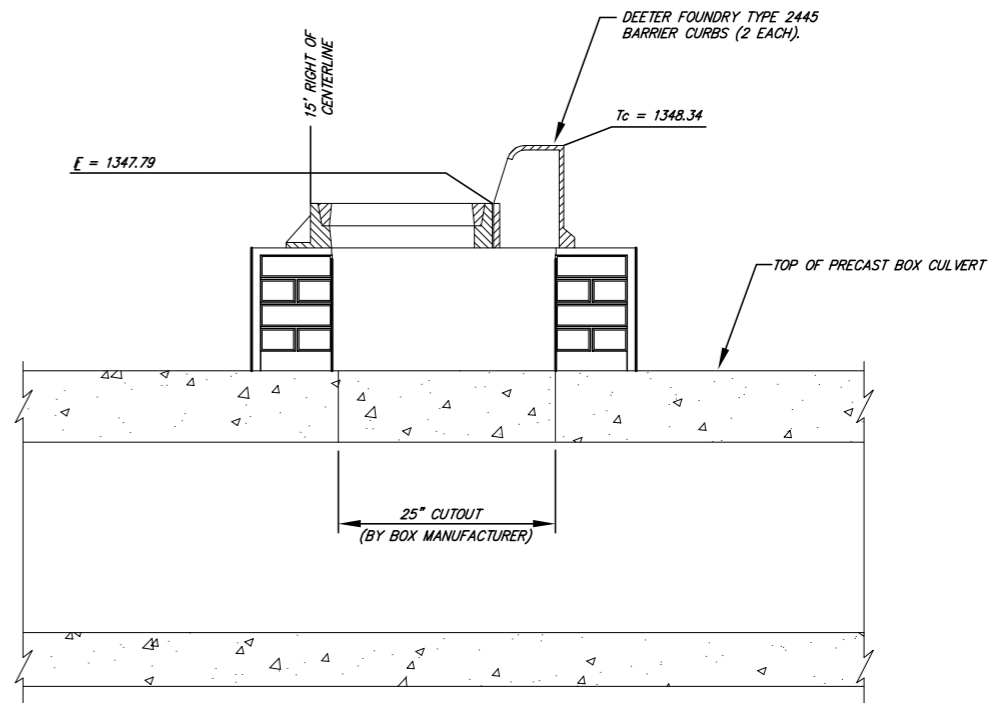


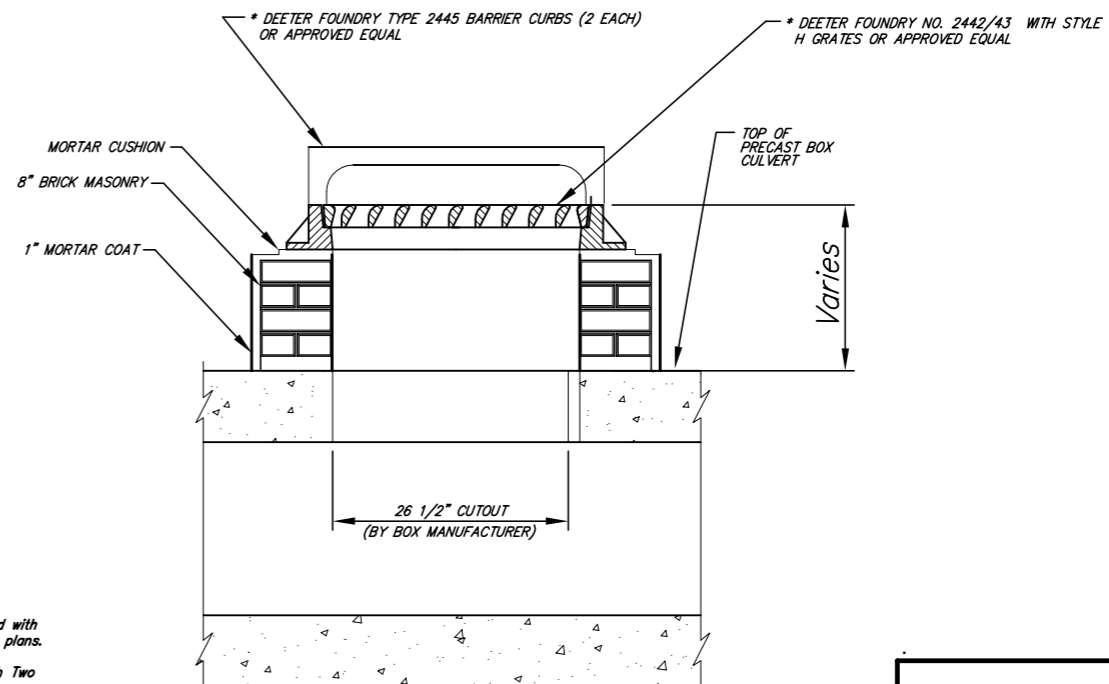
**GENERAL NOTES:**

1. The vanes of the grates shall be oriented with respect to the flow arrows shown on the plans.
2. Use Neenah R-3288 HV Inlet Frame with Two Piece Grate or approved equal.
3. Top of Inlet shall be sloped to match the slope of the adjacent curb.
4. Mortar used in masonry construction shall be in accordance with standard specifications.
5. All brick used in stack construction shall meet Grade ASTM C32 for MM or MS.



**INLET (CURB)(MODIFIED)**

\* THE ENGINEER WILL CONSIDER AN "EQUIVALENT" OF THE BRAND NAME SPECIFIED. PROVIDE THE ENGINEER WITH A COMPLETE DESCRIPTION, LITERATURE, TEST REPORTS, ETC. ON THE PROPOSED "EQUIVALENT". THE BURDEN OF PROOF REGARDING THE "EQUIVALENT" WILL BE UPON THE CONTRACTOR.



Casa Bella Addition RCBC Details WICHITA, KANSAS			
	Ruggles & Bohm, P.A. Engineering, Surveying, Land Planning		DESIGN E.J.G.
			DRAWN MLP
924 North Main Wichita, Kansas 67203 www.rbkansas.com		(316) 264-8008 (316) 264-4621 fax E-mail: info@rbkansas.com	REVIEW BHE
DRAWING FILE SWS Plans [RCB Details]	PROJECT NUMBER SWD #276	DATE Dec. 22, 2005	23 of 32