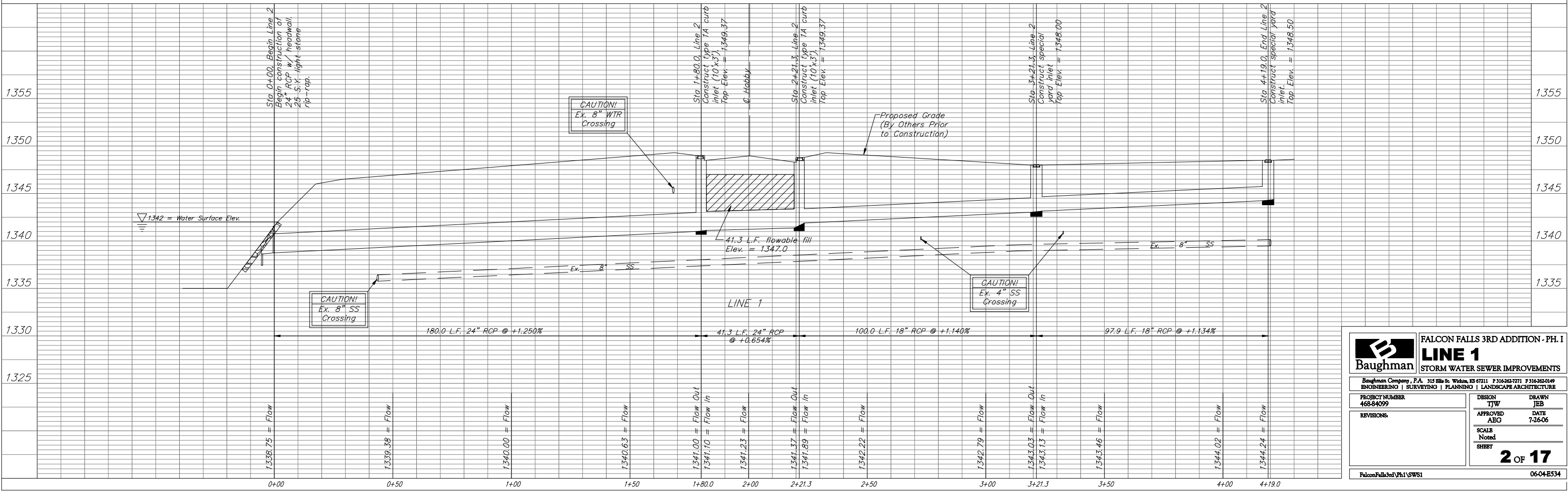
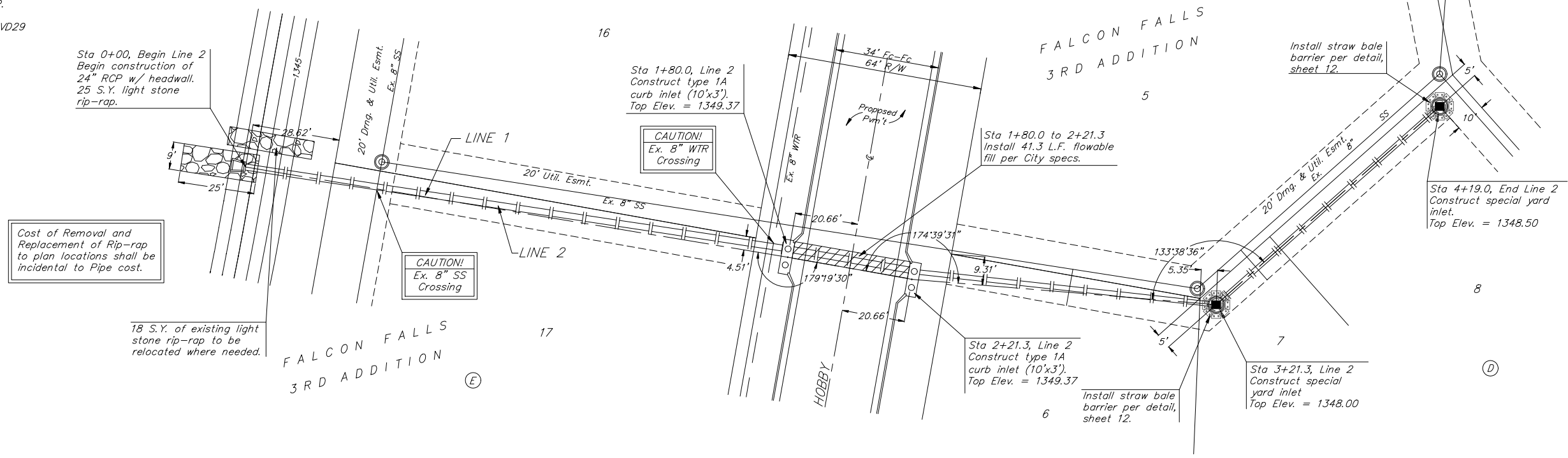
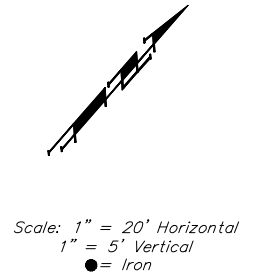


BENCHMARKS:

BRASS PLATE ON NORTH HUB
GUARD OF R.C.B.C. 50' EAST OF
NW CORNER NE 1/4, SEC. 22,
TWP. 26-S, R-1-E.
ELEVATION = 1371.83 NGVD29

"□" CUT ON E. HUBGUARD OF
R.C.B.C. 110' S. OF THE SE COR.,
SE 1/4, SEC. 22, TWP.
26-S, R-1-E.
ELEV. = 1359.54 HGVD29



		FALCON FALLS 3RD ADDITION - PH. I LINE 1 STORM WATER SEWER IMPROVEMENTS	
		<small>Baughman Company, P.A. 315 Ellis St. Wilkes, KS 67111 P 316-262-7771 F 316-262-0149 ENGINEERING SURVEYING PLANNING LANDSCAPE ARCHITECTURE</small>	
PROJECT NUMBER 468-84099	DESIGN TJW	DRAWN JEB	DATE 7-26-06
REVISIONS	APPROVED ABG	SCALE Noted SHEET	2 OF 17
Falcon Falls 3rd PH1 SWS1		06-04-E534	