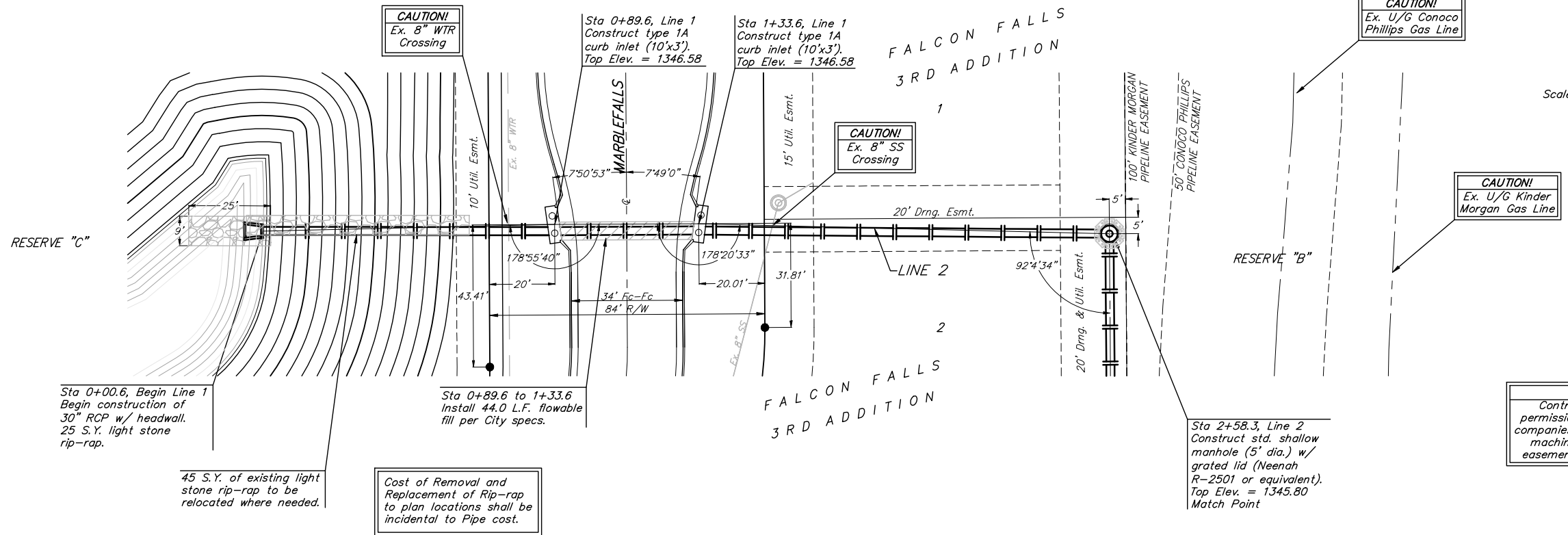


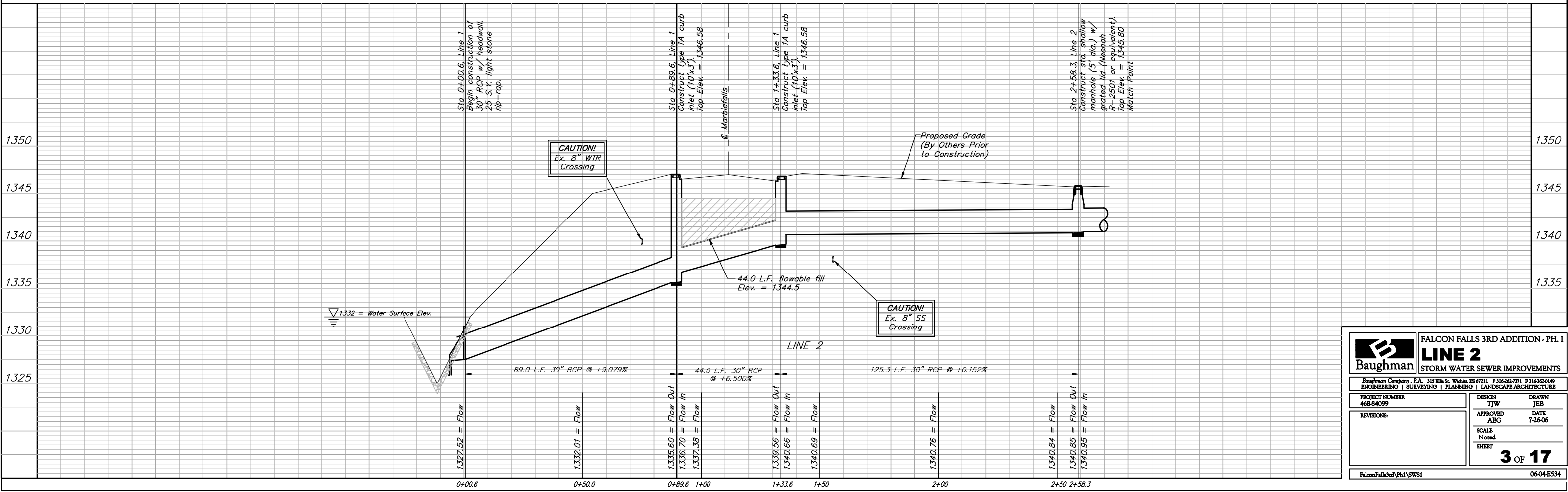
BENCHMARKS:

BRASS PLATE ON NORTH HUB GUARD OF R.C.B.C. 50' EAST OF NW CORNER NE 1/4, SEC. 22, TWP. 26-S, R-1-E. ELEVATION = 1371.83 NGVD29

"□" CUT ON E. HUBGUARD OF R.C.B.C. 110' S. OF THE SE COR., SE1/4, SEC. 22, TWP. 26-S, R-1-E. ELEV. = 1359.54 HGVD29



NOTE:
Contractor to get permission from pipeline companies to operate any machinery in pipeline easements if necessary.



		FALCON FALLS 3RD ADDITION - PH. I LINE 2 STORM WATER SEWER IMPROVEMENTS	
		<small>Baughman Company, P.A. 315 Ellis St. Wichita, KS 67211 P 316-262-7771 F 316-262-0149 ENGINEERING SURVEYING PLANNING LANDSCAPE ARCHITECTURE</small>	
PROJECT NUMBER 468-84099	DESIGN TJW	DRAWN JEB	DATE 7-26-06
REVISIONS	APPROVED ABG	SCALE Noted	SHEET 3 OF 17
<small>Falcon Falls 3rd Ph I VSWSI</small>		<small>06-04-E534</small>	