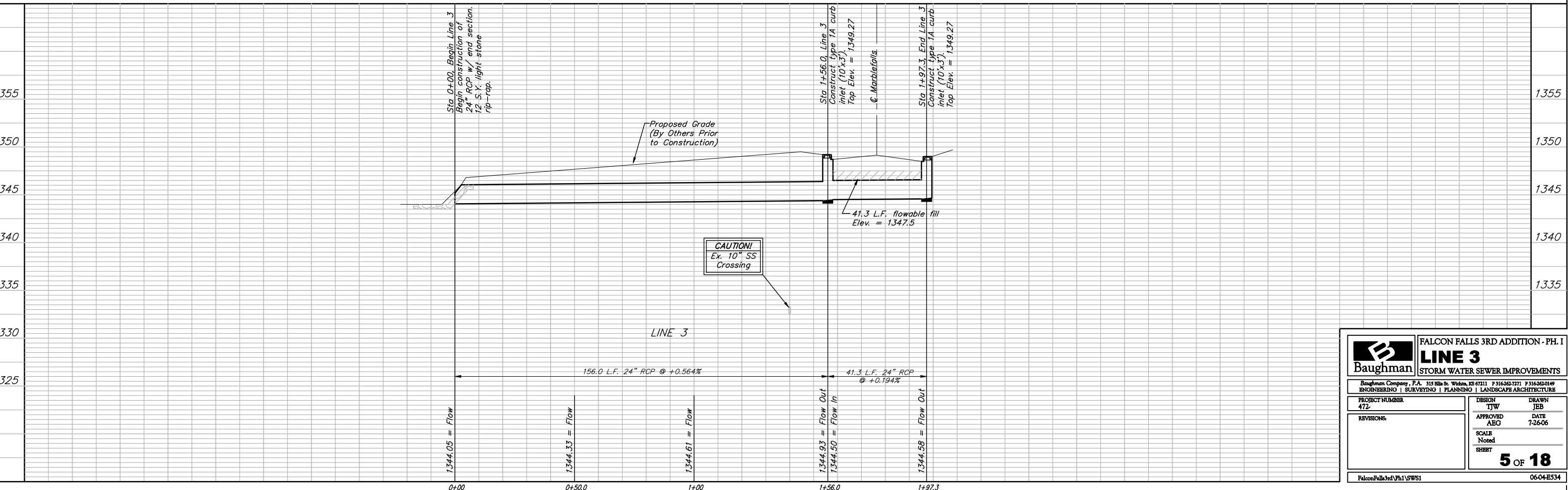
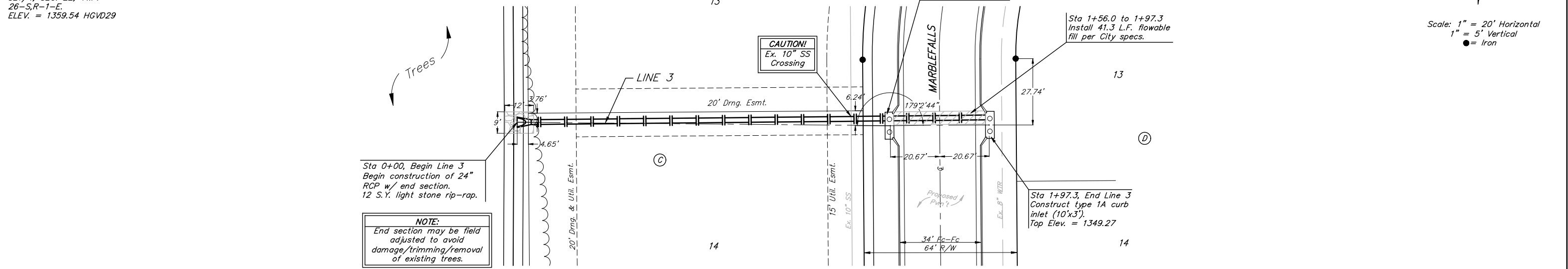


BENCHMARKS:

BRASS PLATE ON NORTH HUB
GUARD OF R.C.B.C. 50' EAST OF
NW CORNER NE 1/4, SEC. 22,
TWP. 26-S, R-1-E.
ELEVATION = 1371.83 NGVD29

"□" CUT ON E. HUBGUARD OF
R.C.B.C. 110' S. OF THE SE COR.,
SE1/4, SEC. 22, TWP.
26-S, R-1-E.
ELEV. = 1359.54 HGVD29

Remove trees only as necessary for
storm water sewer construction and
only with permission of Developer or
Baughman Co. Cost of removal to
be incidental to lump sum bid item
"Site Clearing & Restoration".



		FALCON FALLS 3RD ADDITION - PH. I LINE 3 STORM WATER SEWER IMPROVEMENTS	
		<small>Baughman Company, P.A. 315 Ellis St. Wilkes, KS 67111 P 316262-7771 F 316262-0149 ENGINEERING SURVEYING PLANNING LANDSCAPE ARCHITECTURE</small>	
PROJECT NUMBER 472	DESIGN TJW	DRAWN JEB	DATE 7-26-06
REVISIONS	APPROVED ABG	SCALE Noted	SHEET 5 OF 18
<small>Falcon Falls 3rd Ph I SWSI</small>		<small>06-04-E534</small>	