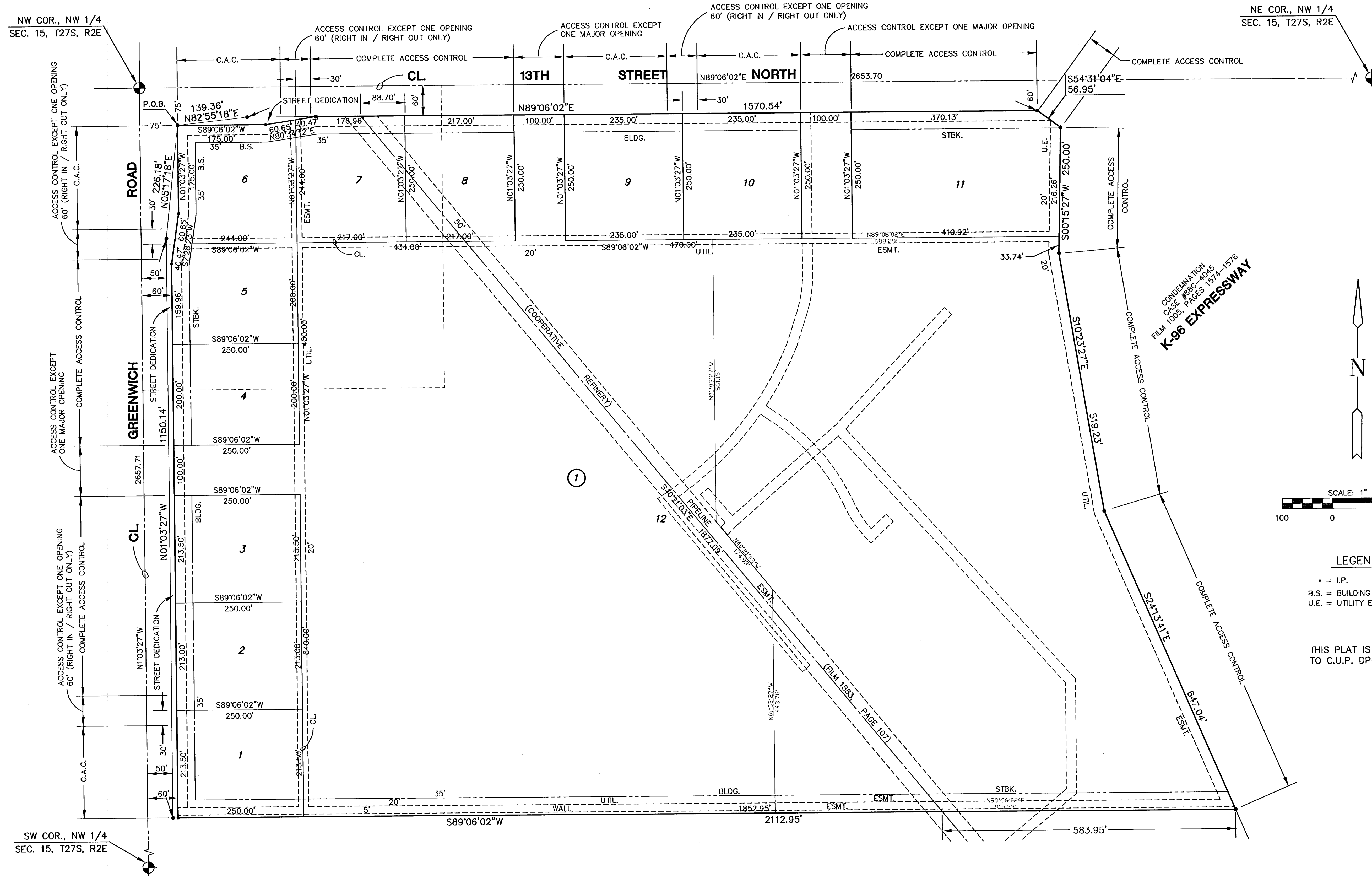
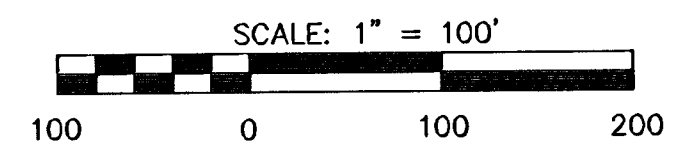
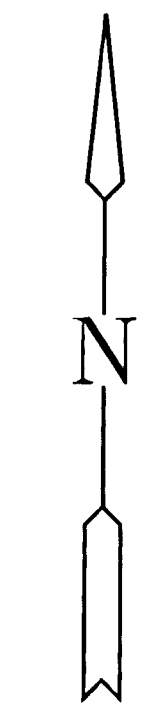


**FINAL PLAT**  
**THE GATEWAY CENTER ADDITION**  
 AN ADDITION TO WICHITA, SEDGWICK COUNTY, KANSAS



CONFIRMATION  
 CASE #REC-4045  
 FILM #005 PAGES 1574-1576  
**K-96 EXPRESSWAY**



**LEGEND**

- = I.P.
- B.S. = BUILDING SETBACK
- U.E. = UTILITY EASEMENT

THIS PLAT IS SUBJECT  
 TO C.U.P. DP-239

NW COR., NW 1/4  
 SEC. 15, T27S, R2E

NE COR., NW 1/4  
 SEC. 15, T27S, R2E

SW COR., NW 1/4  
 SEC. 15, T27S, R2E