

FOUR CORNER PLAN
PRAIRIE POINTE
 AN ADDITION TO WICHITA, SEDGWICK COUNTY, KANSAS

Center of
 Sec. 30, T26S, R1W
 Found Stone 30" Deep
 Reset 3/4" Pipe
 w/PEC Cop

SCALE: 1" = 100'

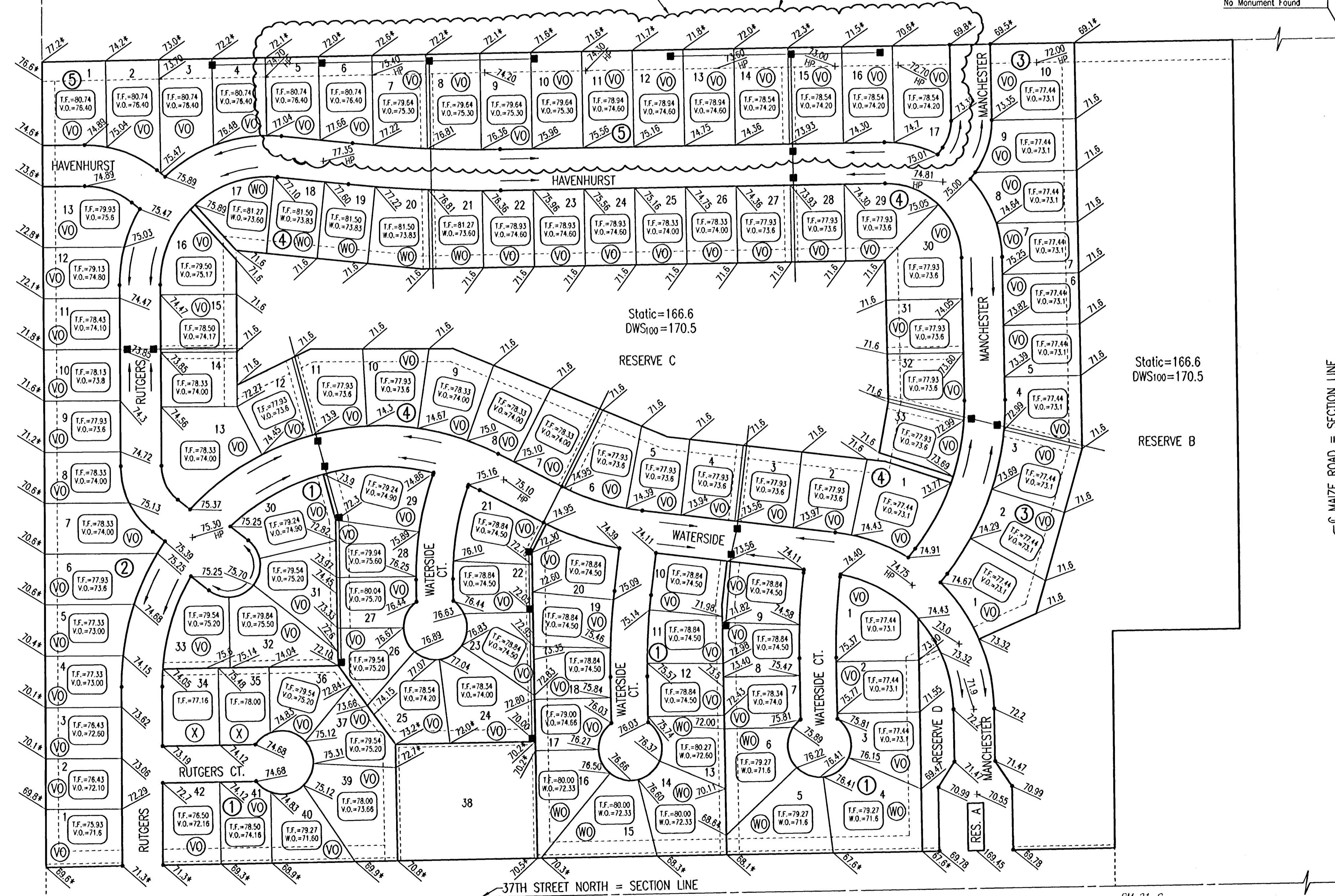
AREA REPLATTED AS:
 PRAIRIE POINTE 2ND, AN ADDITION TO
 WICHITA, SEDGWICK COUNTY, KANSAS.

SEE NEXT SHEET

E 1/4 Corner, Sec. 30
 Tap 26S, R1W
 Found #4 Bar w/ Moehring
 Cop

N.E. Cor., SE 1/4, SE 1/4
 Sec. 30, T26S, R1W
 No Monument Found

MINIMUM OPENINGS	ELEVATION (N.G.V.D.)	CITY DATUM
BLOCK 1		
LOTS 4-6, 13-16, 40-42	1358.0	171.6
LOT 19	1350.0	172.6
LOTS 1-3, 7, 17, 24	1360.5	173.1
LOTS 8-12, 18-23	1361.9	174.5
LOT 25	1361.6	174.2
LOTS 28-30	1362.3	174.9
LOTS 26-27, 31-37	1362.6	175.2
BLOCK 2		
LOTS 1-6	1358.0	171.6
LOTS 7-10	1360.0	172.6
LOTS 11-12	1361.0	173.6
BLOCK 3		
LOTS 1-10	1360.5	173.1
BLOCK 4		
LOTS 1-33	1360.5	173.1
BLOCK 5		
LOTS 14-17	1361.6	174.2
LOTS 11-13	1362.0	174.6
LOTS 7-10	1362.7	175.3
LOTS 1-6	1363.8	176.4



LEGEND

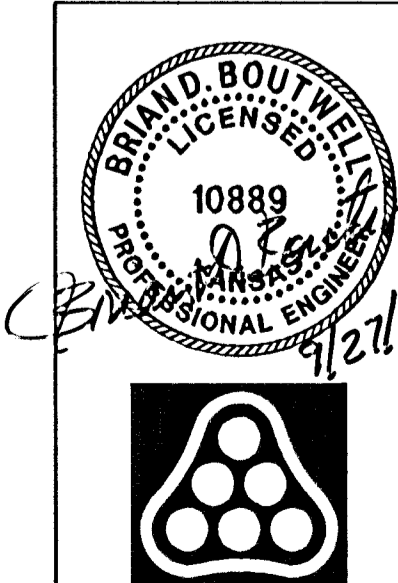
- (X) STD. BASEMENT
- (WO) WALK-OUT BASEMENT
- (VO) VIEW-OUT BASEMENT
- STORM WATER FLOW
- 156.0 SPOT ELEVATION (PROPOSED)
- W.O. WALK-OUT
- V.O. VIEW-OUT
- T.F. TOP OF FOUNDATION

VO OR WO WAS CONSIDERED ACCEPTABLE
 IF THE TOP OF FOUNDATION WAS 5' OR
 LESS ABOVE THE FRONT PROPERTY LINE.

DSWR: BLB OPER: BJS SCALE: 1"=100.00
 C:\2005\05300\000\05300-000-C-4CORNER 09-26-2005 04:51:08 pm

S.W. Cor. SE1/4 of
 Sec. 30, T26S, R1W
 Found 1" Iron Pipe

S.E. Corner
 Sec. 30, T26S, R1W
 Found 1/2" Rebar
 w/ Moehring Cop



No.	Revision	By	Date
PRAIRIE POINTE-PHASE 2			
4-CORNER LOT GRADING PLAN			
(FOR INFORMATION ONLY)			
JAMES L. ARMOUR, P.E.-CITY ENGINEER			
CITY OF WICHITA PROJECT NO. 472-84042			
Professional Engineering Consultants, P.A.			
303 S. TOPEKA • WICHITA, KANSAS 67202			
316-262-2691 • FAX 316-262-3003			
Designed by	BDB, BLB	Job No.	35-05300-000
Drawn by	BJS	Date	May 2005
			Sheet 5 of 38