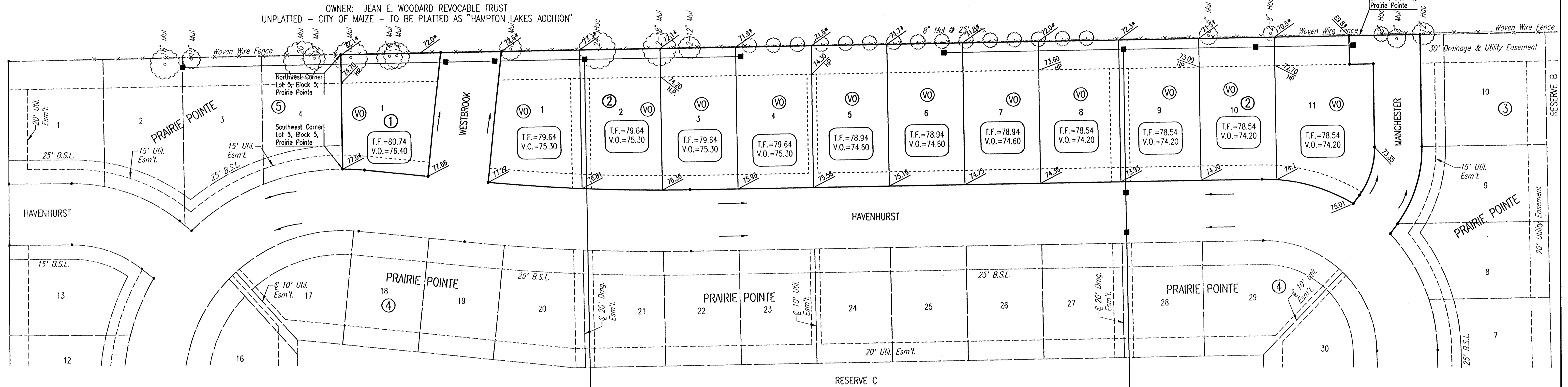


FOUR-CORNER PLAN
PRAIRIE POINTE 2ND
 AN ADDITION TO WICHITA, SEDGWICK COUNTY, KANSAS

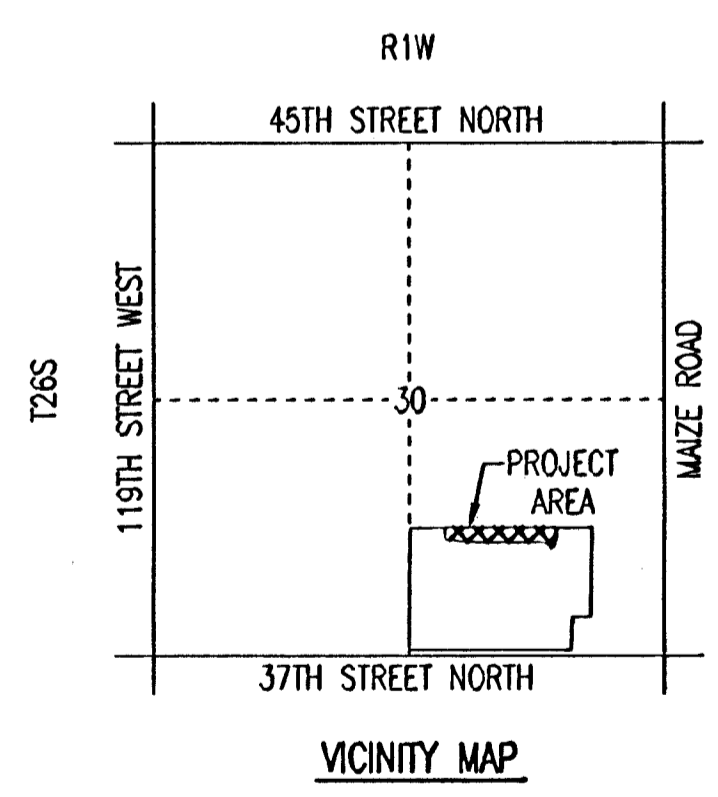
OWNER: JEAN E. WOODARD REVOCABLE TRUST
 UNPLATTED - CITY OF MAIZE - TO BE PLATTED AS "HAMPTON LAKES ADDITION"



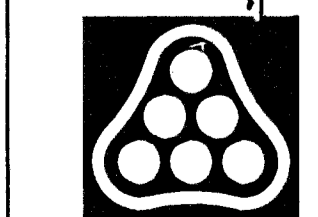
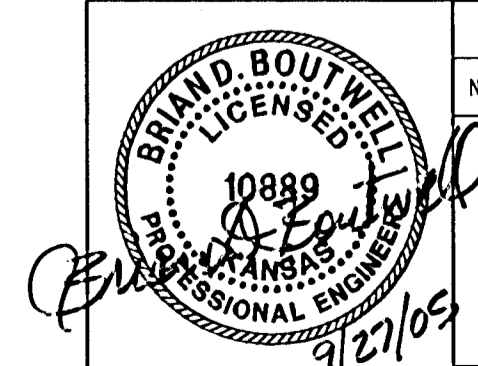
SCALE: 1" = 50'
 • = 1/2" REBAR WITH PEC CAP UNLESS OTHERWISE NOTED

- LEGEND**
- (V.O.) VIEW-OUT BASEMENT
 - STORM WATER FLOW
 - 159.0 SPOT ELEVATION (PROPOSED)
 - V.O. VIEW-OUT
 - T.F. TOP OF FOUNDATION

VO OR WO WAS CONSIDERED ACCEPTABLE IF THE TOP OF FOUNDATION WAS 5' OR LESS ABOVE THE FRONT PROPERTY LINE.



DSNR: BLB OPER: BJS SCALE: 1"=50.00
 C:\2005\05300\000\05300-000-C-4CORNER REPLAT 09-26-2005 04:57:09 pm



No.	Revision	By	Date
	PRAIRIE POINTE-PHASE 2		
4-CORNER LOT GRADING PLAN (FOR INFORMATION ONLY)			
JAMES L. ARMOUR, P.E.-CITY ENGINEER CITY OF WICHITA PROJECT NO. 472-84042 Professional Engineering Consultants, P.A. 303 S. TOPEKA • WICHITA, KANSAS 67202 316-262-2691 • FAX 316-262-3003			
Designed by	BOB, BLB	Job No.	35-05300-000
Drawn by	BJS	Date	May 2005
			Sheet 6 of 38