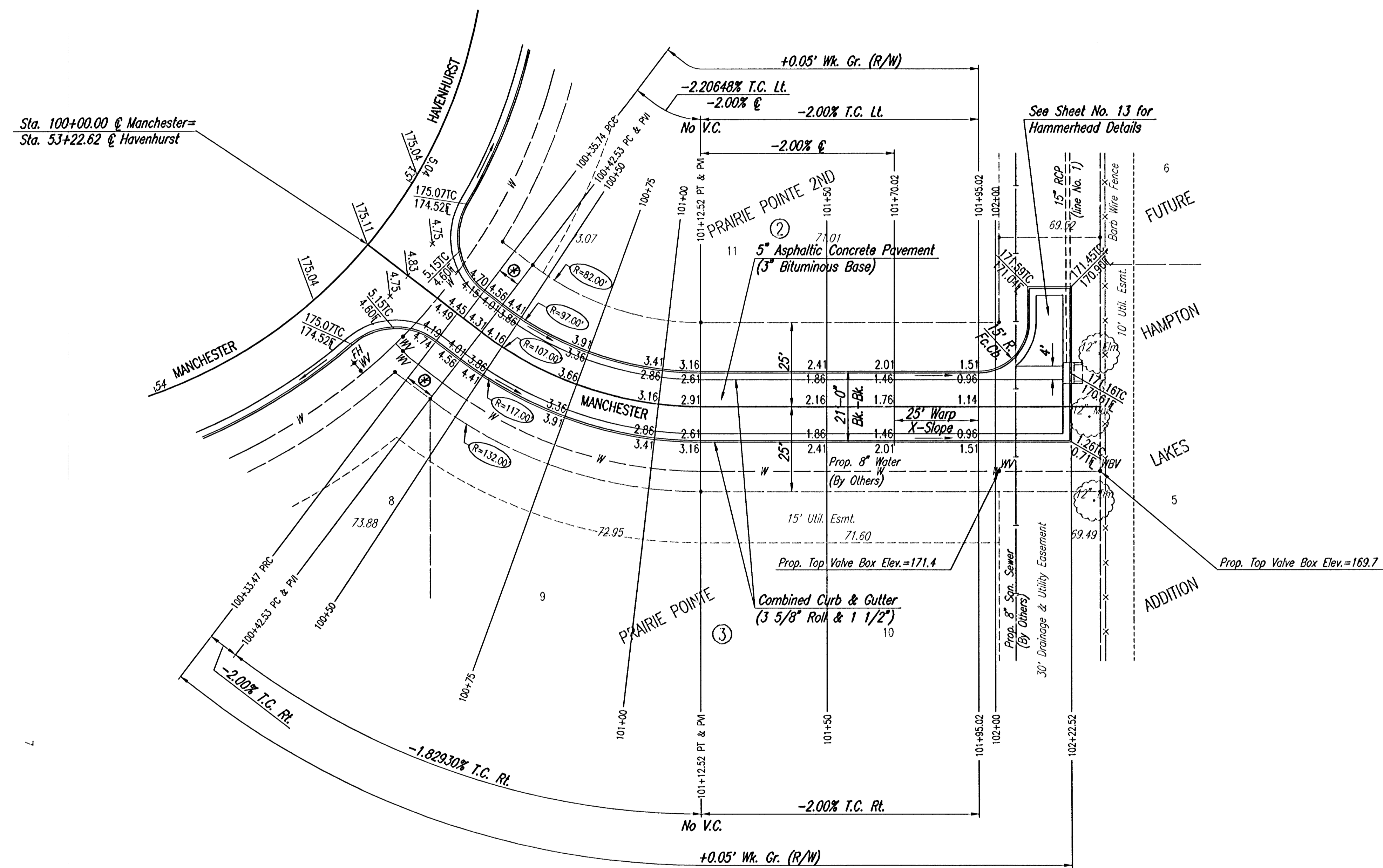


WATER VALVE BOX ELEVATIONS			
STREET	STATION	OFFSET	PROPOSED ELEVATION
MANCHESTER	102+01.01	19.0' RL	171.4
MANCHESTER	102+31.01	19.0' RL	169.7

C CURVE DATA						
A=37°28'42" L D=53'32" 50.8' R=107.00' L=69.99' T=36.3' E=5.99'						
CURVE DATA BASED ON C radius Δ/2=18° 44' 21"						
STATION	ARC LENGTH	FACE CURB LENGTH		CHORD LENGTH		DEFLECTION ANGLE
		LEFT CURB	RIGHT CURB	8' OFF LEFT FACE CURB	8' OFF RIGHT FACE CURB	
100+42.53						0°00'00.0"
100+50.00	7.47'	6.77'	8.17'	6.21'	8.72'	01°59'50.0"
100+75.00	25.00'	22.66'	27.34'	20.75'	29.14'	08°41'36.4"
101+00.00	25.00'	22.66'	27.34'	20.75'	29.14'	08°41'36.4"
101+12.52	12.52'	11.35'	13.69'	10.41'	14.62'	03°21'07.5"
TOTAL	69.99'	63.45'	76.53'			18°44'21.1"

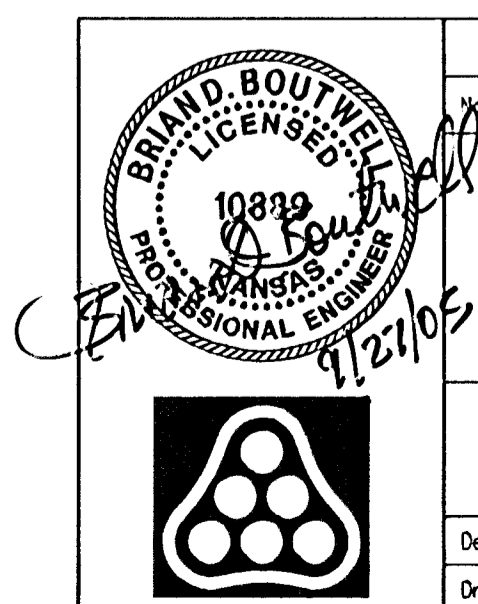
Defl./ft. = 16.064238 min.

SCALE: 1"=20'



③ Transition from Combined Curb and Gutter (6 5/8" & 1 1/2") to Combined Curb and Gutter (3 5/8" Roll & 1 1/2"). To be bid and paid for as "Combined Curb and Gutter (3 5/8" Roll & 1 1/2)".

DSNR: BLB OPER: BJS SCALE: 1"=20.00
 C:\2005\05300\001\05300-000-C-STR\100-102_09-27-2005_06:53:22.am



Revision	By	Date
PRAIRIE POINTE-PHASE 2		
MANCHESTER		
STA. 100+33.47 TO STA. 102+22.52		
JAMES L. ARMOUR, P.E.-CITY ENGINEER CITY OF WICHITA PROJECT NO. 472-84042		
Professional Engineering Consultants, P.A. 303 S. TOPEKA • WICHITA, KANSAS 67202 316-262-2691 • FAX 316-262-3003		
Designed by	BDB, BLB	Job No. 35-05300-000
Drawn by	BJS	Date May 2005
		Sheet 12 of 38