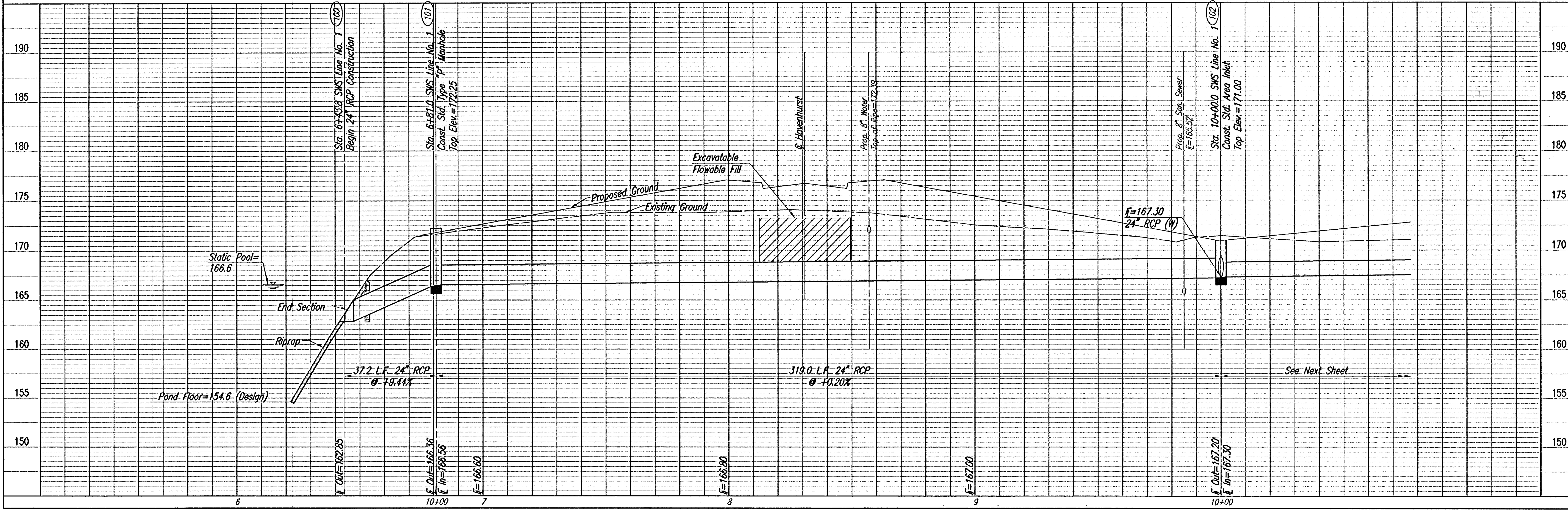


DATE	
BY	
PLAN	CHECKED
	CHECKED

DATE	
BY	
PROFILE	CHECKED
	CHECKED

DSNR: BUB OPER: BUS SCALE: 1"=20.00  
 Q:\2005\05300\000\05300-000-C-SWSLINE1-1 09-27-2005 06:58:48 am



POND  
 Static Pool=166.6  
 DWS100=170.5

RESERVE C  
 Existing Pond

Sta. 6+43.8 SWS Line No. 1  
 Begin 24" RCP Construction  
 Install 37.2 L.F. 24" RCP (N)  
 (Including End Section)

Install 36 S.Y.  
 Light Stone Riprap  
 See Sheet No. 24.

Sta. 6+81.0 SWS Line No. 1  
 Const. Std. Type "P" Manhole  
 Dia.=4'-0"  
 Top Elev.=172.25  
 Install 319.0 L.F. 24" RCP (N)  
 See Sheet No. 22.

Install 37 L.F.  
 Excavatable Flowable  
 Fill to Elev. 173.25

Install Pipe Plug  
 See Sheet No. 24

Sta. 10+00.0 SWS Line No. 1  
 Const. Std. Area Inlet  
 L=5'-4", W=3'-10"  
 Top Elev.=171.00  
 Install 165.0 L.F. 18" RCP (E)  
 Install 4.0 L.F. 24" RCP (W)  
 See Sheet No. 21.

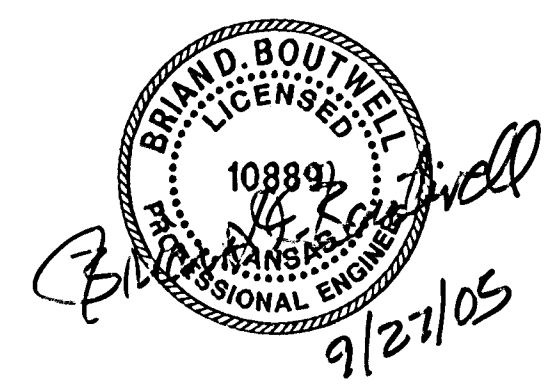
CAUTION !!!  
 Proposed 8" Water  
 City of Wichita

CAUTION !!!  
 Proposed 8" San. Sewer  
 City of Wichita

SCALE: 1"=20'

COORDINATE LIST		
POINT	NORTH	EAST
100	10,875.7481	8,043.9354
101	10,912.9072	8,043.2836
102	11,231.8581	8,037.6892

100 = COORDINATE POINT NO.  
 SEE SHEET NOS. 3 & 4 FOR PLAT COORDINATES  
 Note (A): Construct Suitable Cofferdam and  
 Dewater as Necessary to Construct  
 SWS Line No. 1. Cofferdam may be  
 of Compacted Earth Material or Sheet  
 Piles. Upon Completion of Drainage  
 Improvements, Remove Cofferdam and  
 Restore Pond Banks. This work shall be  
 Subsidiary to 24" RCP.



PRAIRIE POINTE - PHASE 2  
**SWS LINE NO. 1**  
 STA. 6+43.8 TO STA. 10+00.0  
 JAMES L. ARMOUR, P.E.-CITY ENGINEER  
 CITY OF WICHITA PROJECT NO. 477-84042

Professional Engineering Consultants, P.A.  
 303 S. TOWNE, WICHITA, KANSAS 67202  
 316-262-2601 • FAX 316-262-8003  
 Designed By: BUB, BUB  
 Drawn By: BUS  
 Job No.: 35-05300-000  
 Date: May 2005