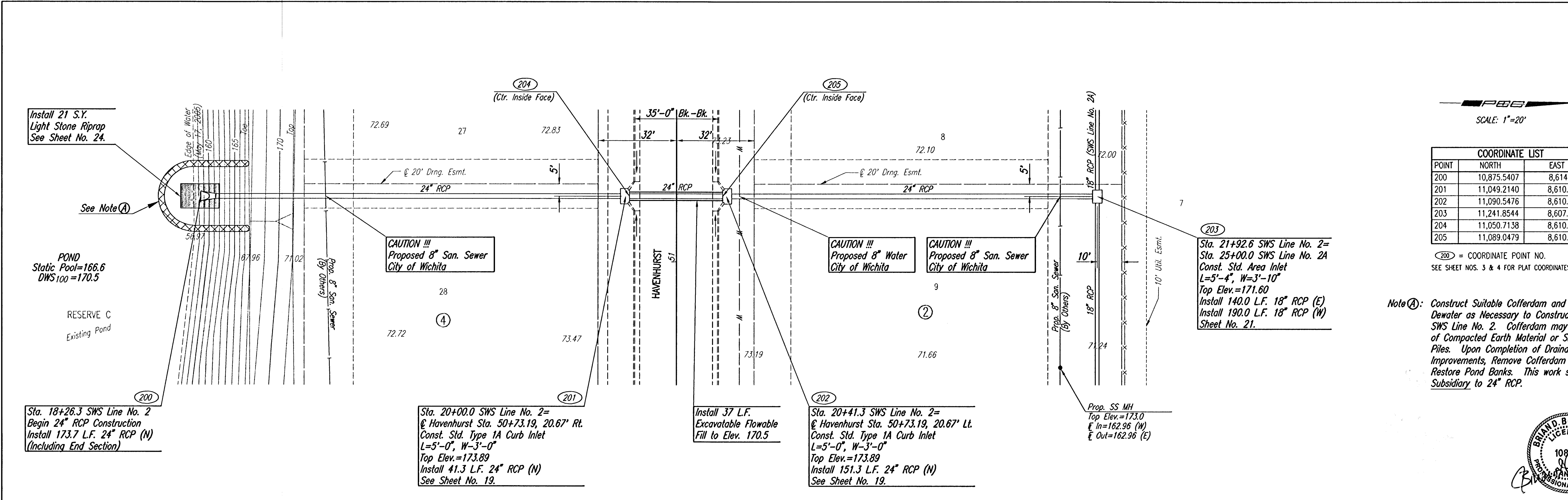


DATE	
BY	
CHECKED	
CHECKED	
PLAN	

DATE	
BY	
CHECKED	
CHECKED	
PROFILE	

DSNR: BLB OPER: BUS SCALE: 1"=20.00  
 Q:\2005\05300\000\05300-00-C-SWSLINE2-1 09-27-2005 07:07:03 am

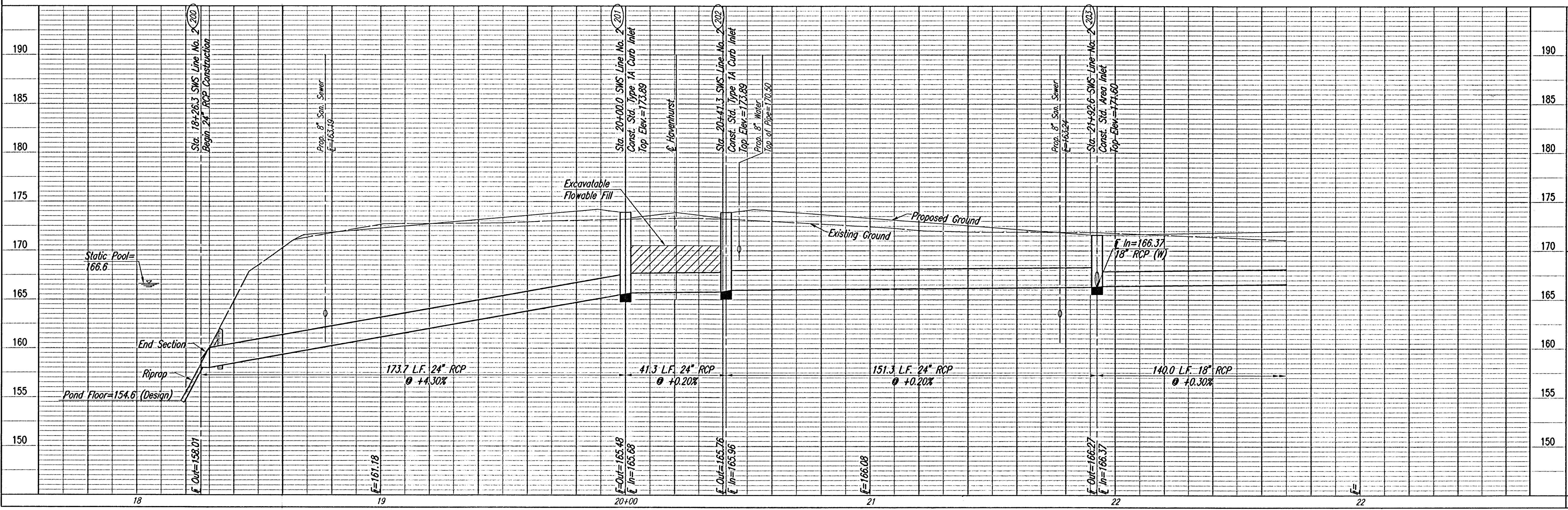
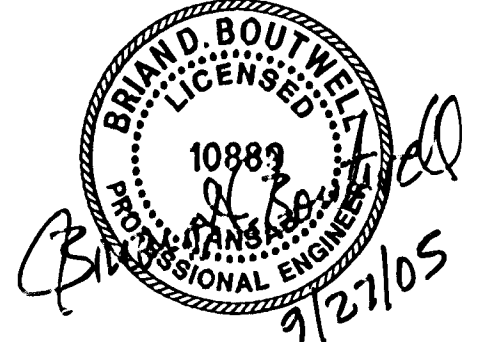


SCALE: 1"=20'

COORDINATE LIST		
POINT	NORTH	EAST
200	10,875.5407	8,614.0271
201	11,049.2140	8,610.9805
202	11,090.5476	8,610.2556
203	11,241.8544	8,607.6016
204	11,050.7138	8,610.9542
205	11,089.0479	8,610.2819

(200) = COORDINATE POINT NO.  
 SEE SHEET NOS. 3 & 4 FOR PLAT COORDINATES

Note (A): Construct Suitable Cofferdam and Dewater as Necessary to Construct SWS Line No. 2. Cofferdam may be of Compacted Earth Material or Sheet Piles. Upon Completion of Drainage Improvements, Remove Cofferdam and Restore Pond Banks. This work shall be Subsidiary to 24" RCP.



PROJ. POINT - PHASE 2

**SWS LINE NO. 2**  
 STA. 18+26.3 TO STA. 21+92.6

JAMES L. ARMOUR, P.E.-CITY ENGINEER  
 CITY OF WICHITA PROJECT NO. 472-86042

Professional Engineering Consultants, P.A.  
 303 S. TORREY WICHITA, KANSAS 67202  
 316-262-2601 FAX 316-262-3603

Designed By: BOB, BLB  
 Drawn By: BUS  
 Job No.: 35-05300-000  
 Date: May 2005

Sheet 16 of 38