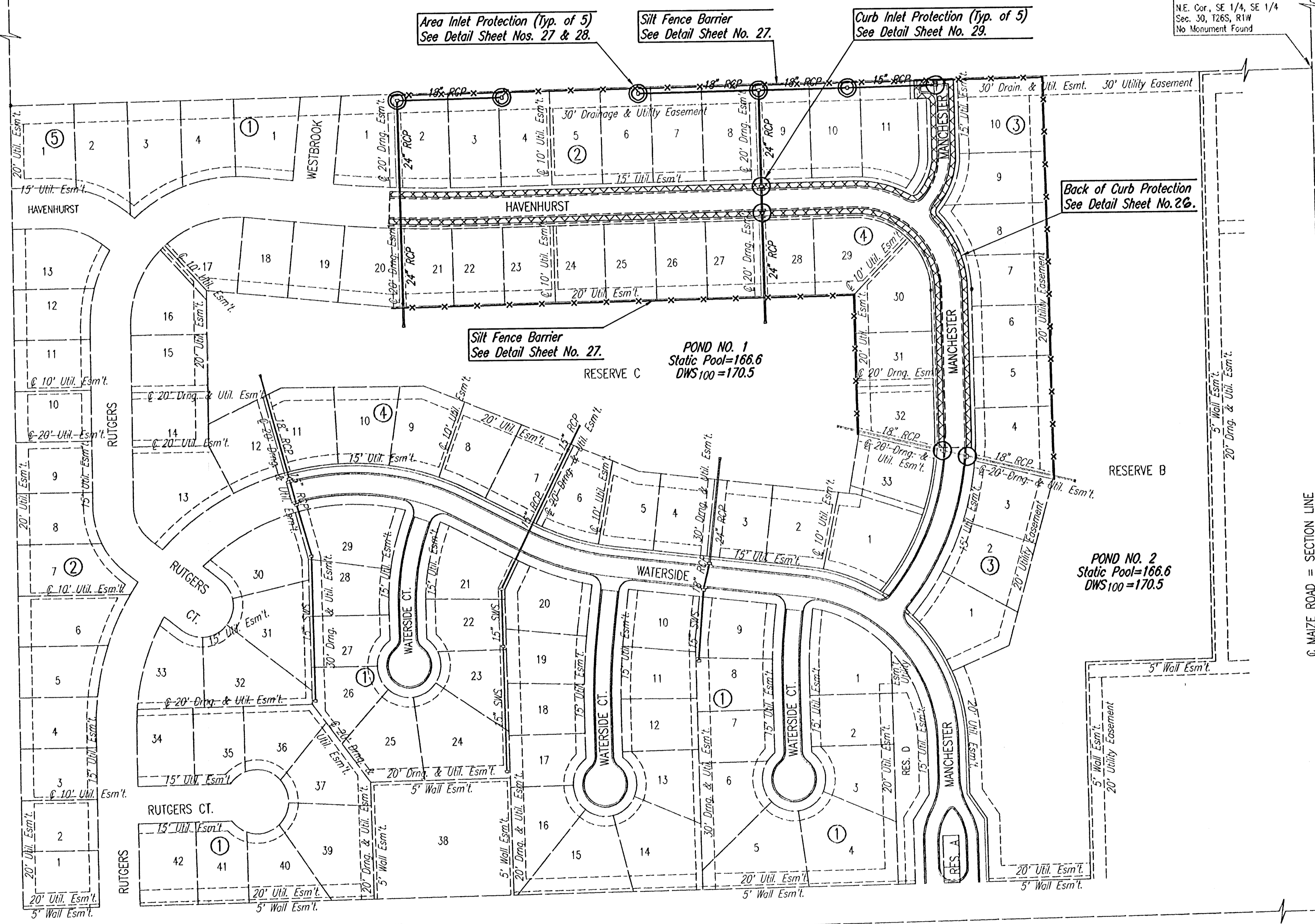


Center of
Sec. 30, T26S, R1W
Found Stone 3/4" Deep
Reset 3/4" Pipe
w/PEC Cop

E 1/4 Corner, Sec. 30
Tap. 26S, R1W
Found #4 Bar w/ Moehring
Cop

NE. Cor., SE 1/4, SE 1/4
Sec. 30, T26S, R1W
No Monument Found

S.E. Corner
Sec. 30, T26S, R1W
Found 1/2" Rebar
w/ Moehring Cop



GENERAL NOTES

1. THE EROSION CONTROL DEVICES SHOWN ON THIS SHEET ARE CONSIDERED MINIMUM STANDARDS. WHENEVER SEDIMENT ENTERS THE STREETS, STORM SEWERS, DITCHES, OR PONDS, CONTRACTOR WILL INSTALL ADDITIONAL DEVICES, AS NEEDED, TO CORRECT THE PROBLEM.
2. THE EROSION CONTROL DEVICES SHOWN HEREON MUST BE IN PLACE AT ALL TIMES DURING CONSTRUCTION UNTIL SUCH TIME AS THE SITE IS REESTABLISHED WITH PAVING OR GRASS. TEMPORARY OR PERMANENT SEED AND MULCH WILL BE INSTALLED WHEN EARTHWORK ACTIVITIES CEASE IN AN AREA FOR 14 DAYS OR MORE.
3. BACK OF CURB PROTECTION: AS SHOWN ON CITY STANDARD DETAILS. THESE DEVICES MUST REMAIN IN PLACE UNTIL THE AREA BETWEEN THE CURB AND RIGHT-OF-WAY LINE HAS BEEN PERMANENTLY STABILIZED.
4. ANY MUD INADVERTENTLY TRACKED ONTO ANY STREET WILL BE CLEANED UP BY THE CONTRACTOR, AT THE END OF EACH DAY'S WORK.
5. CONTRACTOR TO FURNISH A TRUCK WASH-OUT PIT TO BE PLACED AT A CONVENIENT LOCATION THAT DOES NOT CONFLICT WITH CONSTRUCTION. CONTRACTOR SHALL CLEAN OUT AND BACKFILL PIT PRIOR TO FINAL INSPECTION.

LEGEND

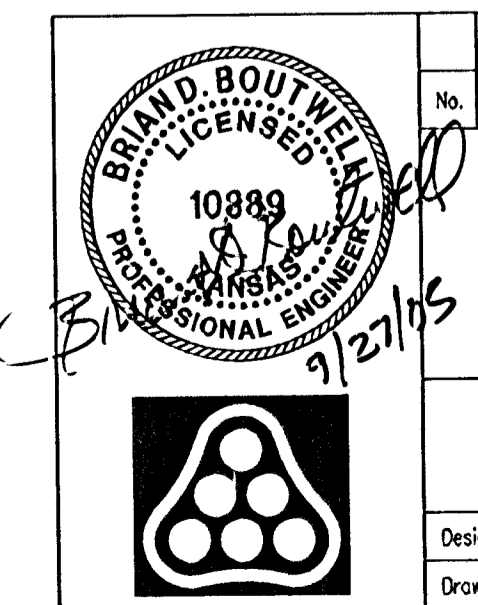
- x— Silt Fence Barrier
- Area Inlet Protection
- Curb Inlet Protection
- ▨ Back of Curb Protection

SCALE: 1"=100'



DSNR: BLB OPER: BJS SCALE: 1"=100.00
 Q:\2005\05300\000\05300-000-C-EROSIONCONTROL 09-27-2005 07:38:59 am

S.W. Cor. SE1/4 of
Sec. 30, T26S, R1W
Found 1" Iron Pipe



Revision		By	Date
PRAIRIE POINTE--PHASE 2			
EROSION CONTROL (BMP) PLAN			
JAMES L. ARMOUR, P.E.—CITY ENGINEER CITY OF WICHITA PROJECT NO. 472-84042 Professional Engineering Consultants, P.A. 303 S. TOPEKA • WICHITA, KANSAS 67202 316-262-2691 • FAX 316-262-3003			
Designed by	BDB, BLB	Job No.	35-05300-000
Drawn by	BJS	Date	May 2005
			Sheet 25 of 38