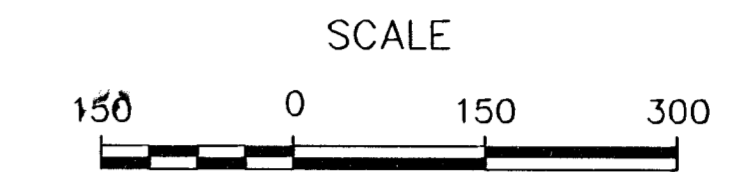


LATERAL 108, SANITARY SEWER #23 TO SERVE
SAND PLUM ADDITION
PROJECT NUMBER 468-83822
OCA NUMBER 744073
WICHITA, KANSAS

JIM ARMOUR, P.E., ACTING CITY ENGINEER

INDEX

- 1 Cover Sheet
- 2-5 Plan & Profile Sheets
- 6 Manhole Details
- 7 Riser Details
- 8-12 Erosion Control BMP's
- 13 Sand Plum Addition Plat
- 14 Right-of-Way Vacation Exhibit



LEGEND

- AMINC SET = 5/8" Rebar AMINC CLS #10 (set)
- ▲ = Section Corner
- R.O.W. = Right-of-Way
- BPED = Bell Pedestal
- ☼ = Cedar
- 1298 = Contour Elevation
- X = Fence
- G-G = Gas
- ↓ = Guy Anchor
- ⊙ = Light Pole
- MB = Mailbox
- MH = Manhole
- = Overhead Electric
- PP = Pole
- SS = Sanitary Sewer
- ☼ = Tree
- UT— = Underground Telephone
- W = Water

GENERAL NOTES

1. Contractor will be required to provide notice to utility companies a minimum of twenty-four (24) hours prior to any excavation, as follows:

The Contractor must notify the following in case of an emergency:

Southwestern Bell Telephone Co.
 154 N. Broadway
 Wichita, Kansas 67202
 Jim Toben
 316-268-2245

Wichita Water & Sewer Dept.
 8th Floor, City Hall
 455 N. Main St.
 Wichita, Kansas 67202
 Bill Perkins/Paul Bryant
 316-268-4555

Westor Energy
 P.O. Box 208
 Wichita, Kansas 67201
 Jimmy Washington
 316-261-6315

Cox Communications
 701 E. Douglas
 Wichita, Kansas 67202
 Brian Ring
 316-262-4270 Ext.169

Wichita Water & Sewer Dept.
 8th Floor, City Hall
 455 N. Main St.
 Wichita, Kansas 67202
 Bill Perkins
 316-268-4555

Kansas One Call
 800-344-7233

Emergency 911

Aquila Network
 1611 S. Hoover
 Wichita, Kansas 67209
 Calvin Briggs
 316-941-7233

2. Contractor shall not start work on the project until the project inspector is assigned to the project and is present on the site. Any work done without inspection will be required to be uncovered for inspection.

3. Underground utility service lines and overhead utility pole lines are to be adjusted as necessary by others prior to construction, unless the plans specifically call for their locations, as shown on the plans, represent the best information obtainable for design. Location information has been obtained from the various utility companies and is either from company record drawings or company-provided field locations. The Contractor will be required to work around existing utilities within the right-of-way which do not conflict with proposed construction.

4. The contractor shall be responsible for preserving property irons. The Contractor will be required to reestablish any property irons which are damaged or destroyed by his construction operations. Such irons shall be reestablished by a licensed land surveyor in accordance with state law.

5. All areas disturbed by construction operations shall be seeded with rye grass at a rate of 300 lbs/acre immediately following construction in that area. Ground shall be prepared per City of Wichita specifications prior to seeding. All areas disturbed by sewer construction on adjacent properties, i.e. R/W & easements shall be restored with the same grass sod as per AR 78.

6. Contractor shall verify the location of all utilities prior to beginning construction.

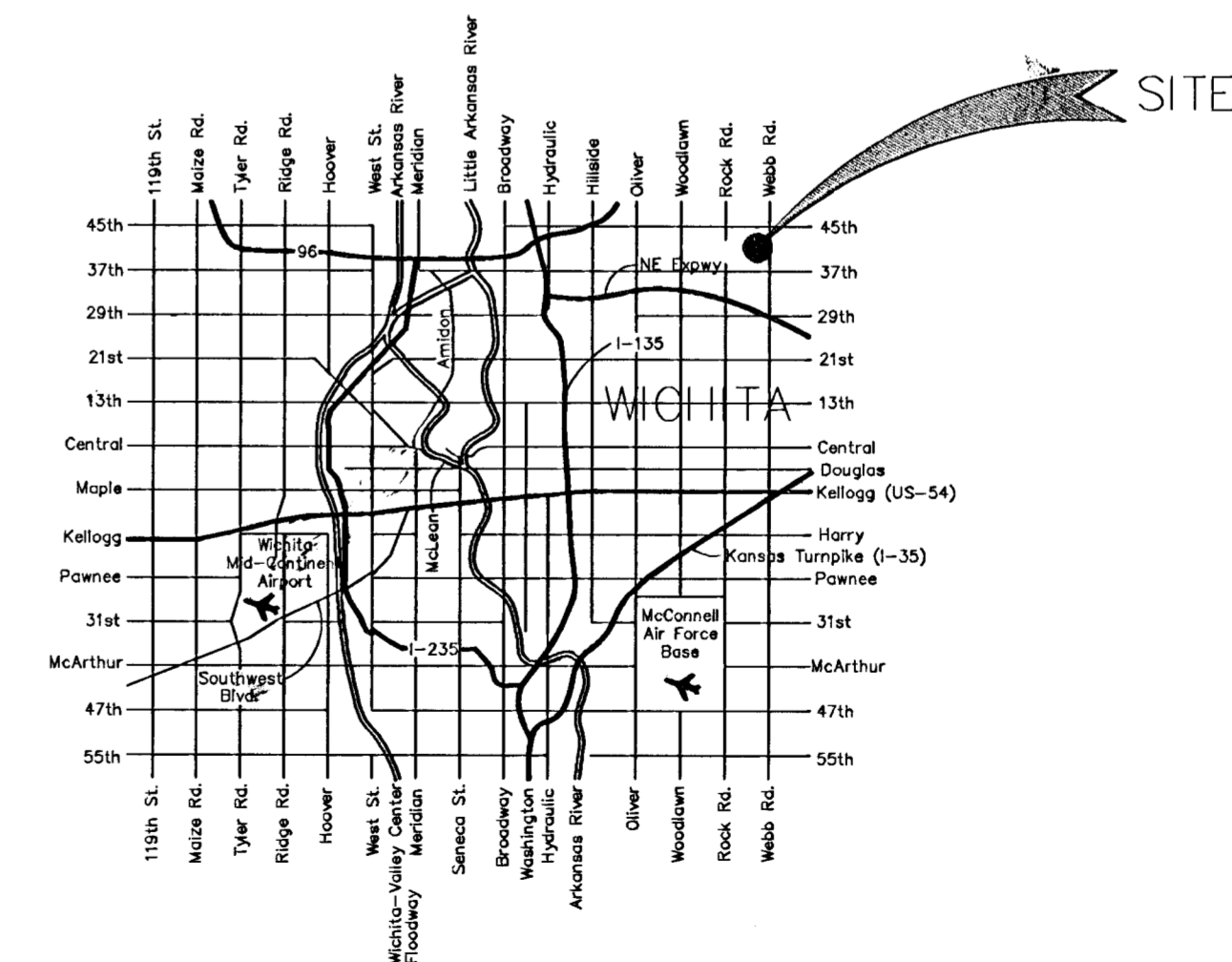
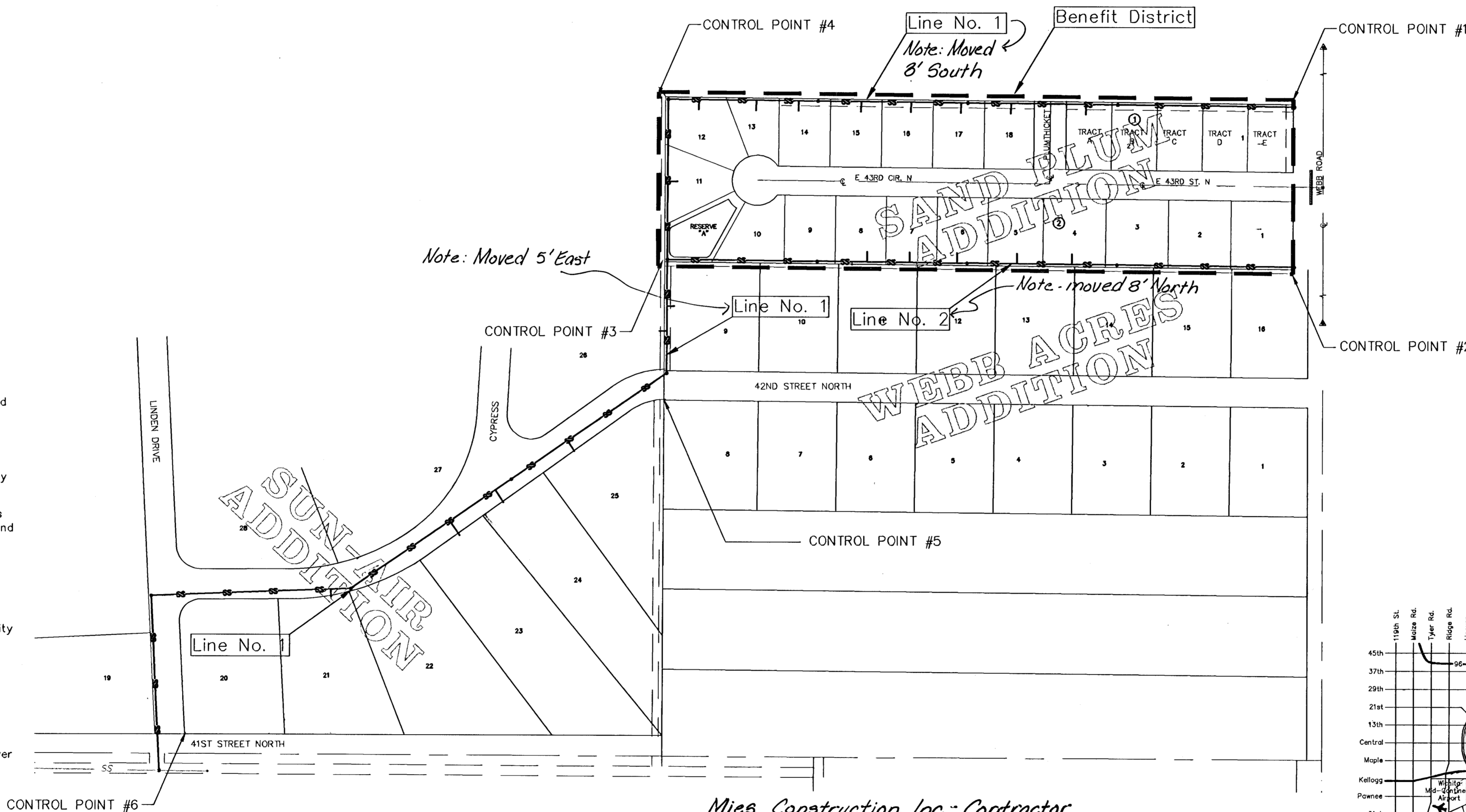
7. Contractor shall implement Best Management Practices in accordance with city regulations.

8. Contractor shall notify all property owners prior to commencing construction.

9. Trees and shrubs in public right-of-way which are in direct conflict with proposed new construction shall be removed by the Contractor with the Engineer's approval. Trees and shrubs which are not in direct conflict with the proposed new construction shall be saved and protected from damage.

10. Remove and replace all driveway culvert pipes as necessary for sanitary sewer construction. Contractor shall utilize existing culvert pipe for replacement.

11. Trenches are to be sand backfilled and flushed at all existing driveway locations in accordance with City of Wichita specifications.



CONTROL POINTS

	Description/Location	N	E
# 1	5/8" BAR W/AMINC CAP, NE CORNER, LOT 1, BLOCK 1, SAND PLUM ADDITION	11311.86	19940.00
# 2	5/8" BAR W/AMINC CAP, SE CORNER, LOT 1, BLOCK 2, SAND PLUM ADDITION	10981.61	19940.00
# 3	5/8" BAR W/AMINC CAP, SW CORNER, RESERVE "A", SAND PLUM ADDITION	10994.09	18681.36
# 4	5/8" BAR W/AMINC CAP, NW CORNER, LOT 12, BLOCK 2, SAND PLUM ADDITION	11324.33	18682.43
# 5	PROPERTY CORNER, NE CORNER, LOT 25, SUN-AIR ADDITION	10717.69	18680.39
# 6	PROPERTY CORNER, SW CORNER, LOT 20, SUN-AIR ADDITION	10047.84	17722.61

Mies Construction, Inc. - Contractor
 Thom, City Inspector
 Released 6/7/05
 As-Built
 Risers
 .pdf by JDL 3/3/06

DECEMBER 2004

PLANS PREPARED BY

POE & ASSOCIATES, INC.
 CONSULTING ENGINEERS
 5940 E. Central, Suite 200 • Wichita, KS 67208-4242
 Phone 316/685-4114 • FAX 316/685-4444



VICINITY MAP

BENCHMARK:

Railroad spike E. face of power pole at NE corner Lot 1, Block 1, Sand Plum Addition

Elevation 1417.01 MSL (229.61 city datum)

021102103102103-031ascov.dwg Tue Jan 04 09:34:57 2005 Steve Schmidt-Poe & Associates of Kansas, Inc.