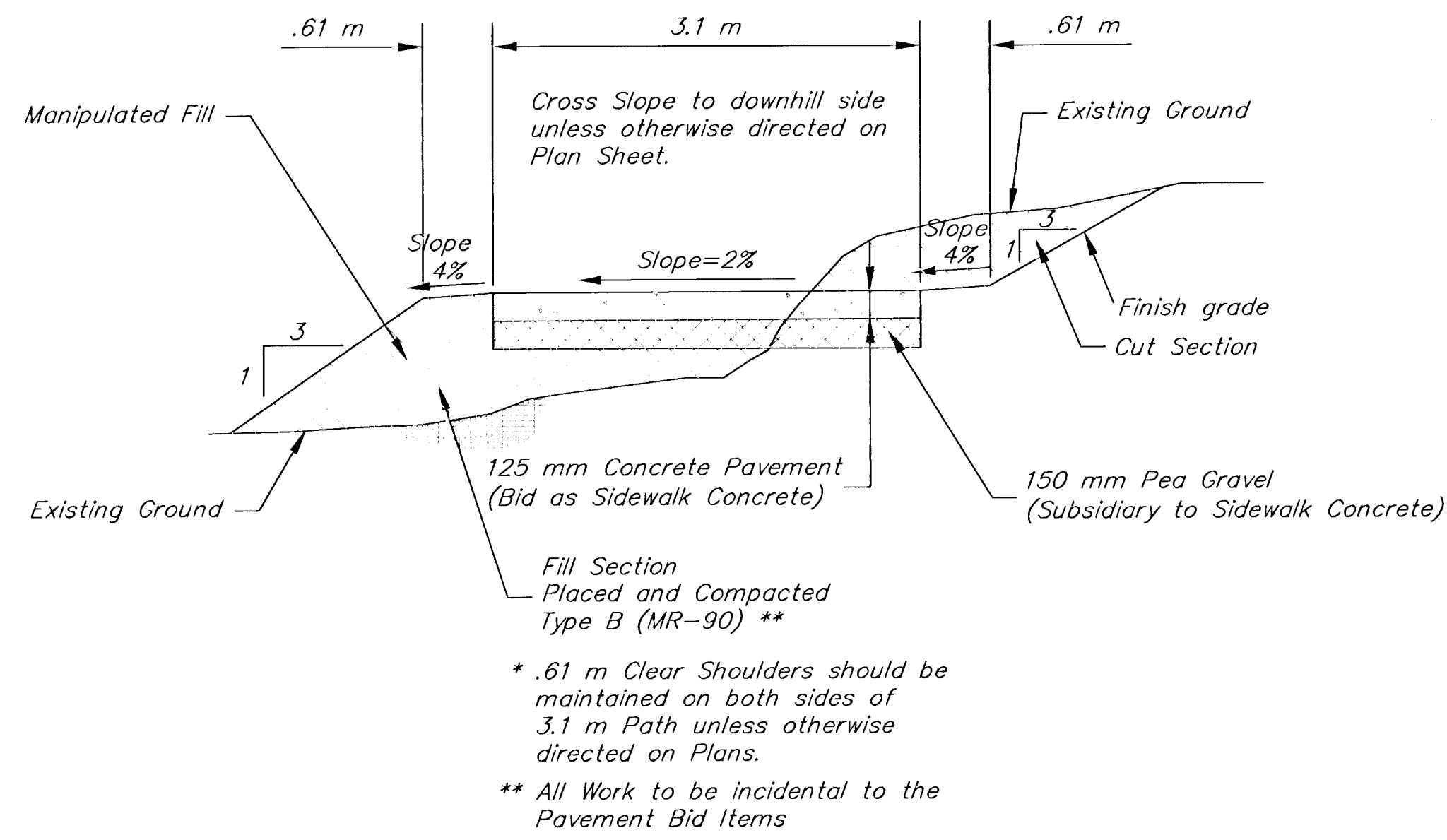


FIWA REGION NO.	STATE	PROJECT NO.	YEAR	SHEET NO.	TOTAL SHEETS
7	KANSAS	87N-0288-01, FPAW CMQ-N028(801)	2002	2	18

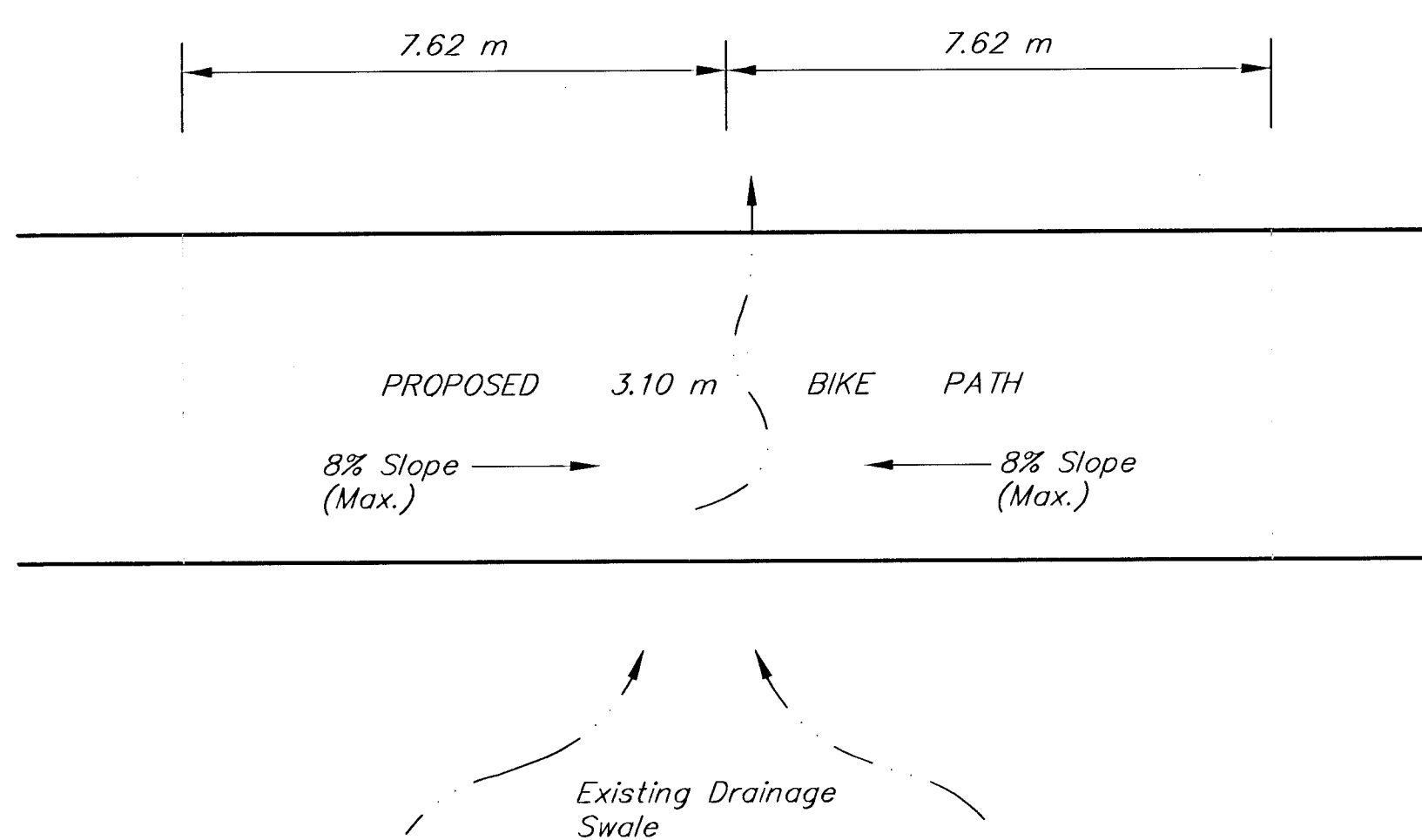
GENERAL NOTES

- Utility service lines, poles, valve boxes, meters, etcetera are to be adjusted as necessary by others prior to construction unless the plans specifically call for their adjustment by the Contractor or unless the plans specifically identify a utility to be adjusted by its owner during construction. Existing utilities and their location, as shown on the plans, represent the best information obtainable for design. The contractor will be required to work around existing utilities within the right-of-way which do not conflict with proposed construction. Relocations or adjustments to utilities shall be subsidiary to "Site Clearing & Restoration" in bid items.
- Rubble from the removal of miscellaneous structures and excess excavation which is to be wasted shall be disposed of on sites to be provided by the Contractor. These sites shall be approved by the Engineer as to suitability, appearance and site location. Locations that, in the opinion of the Engineer, will leave an unsightly appearance will not be approved. All disposal sites must be approved by the Kansas Department of Health and Environment. Material either stockpiled or disposed of in a flood plain would require a Kansas State Board of Agriculture permit. Any material dumped in waters of the United States or wetlands is subject to U.S. Corps. of Engineers permitting regulations. Any material buried or stockpiled beyond approved construction limits would require additional archaeological investigations unless buried in a previously approved borrow location. Rubble removal and disposal shall be subsidiary to "Site Clearing & Restoration" in bid items.
- All areas disturbed by construction operations shall be sodded with Kansas Premium Fescue Blend sod. Sodding time shall be between Feb. 1 thru June 1 and Sept. 1 thru Nov. 1. The cost of sodding shall be Part of to the bid item "Fescue Sodding".
- Trees and shrubs in public right-of-way which are in direct conflict with proposed new construction shall be removed by the Contractor with the Engineer's approval. Trees and shrubs which are not in direct conflict with proposed new construction shall be saved and protected from damage. Trees that are not to be relocated are noted on the plans. Tree removal and relocation costs are subsidiary to "Right of Way Clearing & Preparation" in bid items.
- The Contractor shall be responsible for preserving property irons. The Contractor will be required to re-establish any property irons which are damaged or destroyed by his construction operations. Such irons shall be re-established by a licensed surveyor in accordance with state laws. Cost to be subsidiary to "Site Restoration" in bid items.
- Underground Irrigation Systems** Properties within the project may have underground irrigation systems (Lawn Sprinklers) which conflict with new construction. Contractor shall remove such components as needed during construction of the project. The irrigation system shall be reinstalled in like kind before project completion. Any irrigation system modifications required because of project improvements shall be coordinated with the property owner. Portions of underground irrigation systems not in conflict with new construction shall be protected from damage and shall remain in place. All work related to underground irrigation/sprinklers shall be bid as irrigation/sprinklers system repair lump sum.
- Coordinate sign relocations with Traffic Engineering at 268-4666. Material designated to be removed but not relocated shall be salvaged for removal by City forces. Installation of new signs, posts, bolts, etc. and relocation of existing signs shall be subsidiary to "Signage" in bid items.
- All work associated with the installation of the wheelchair ramps, including removal of existing curb and gutter and construction of depressed curb and gutter, shall be included in the bid item "Wheelchair Ramp."
- Unless noted otherwise, all work and materials shall conform to the appropriate sections of the 1990 edition "Standard Specifications for State Road and Bridge Construction" by the Kansas Department of Transportation.
- PVC pipe shall be schedule 40.
- Contractor shall submit shop drawings of bridge to the Engineer for approval.
- Match existing swales. See details this sheet.
- Trim existing trees to within 3 feet min. distance from edge of bike path. Tree pruning to be done by experienced tree-care service or arborist that is KAA (Kansas Arborist Association) Certified.

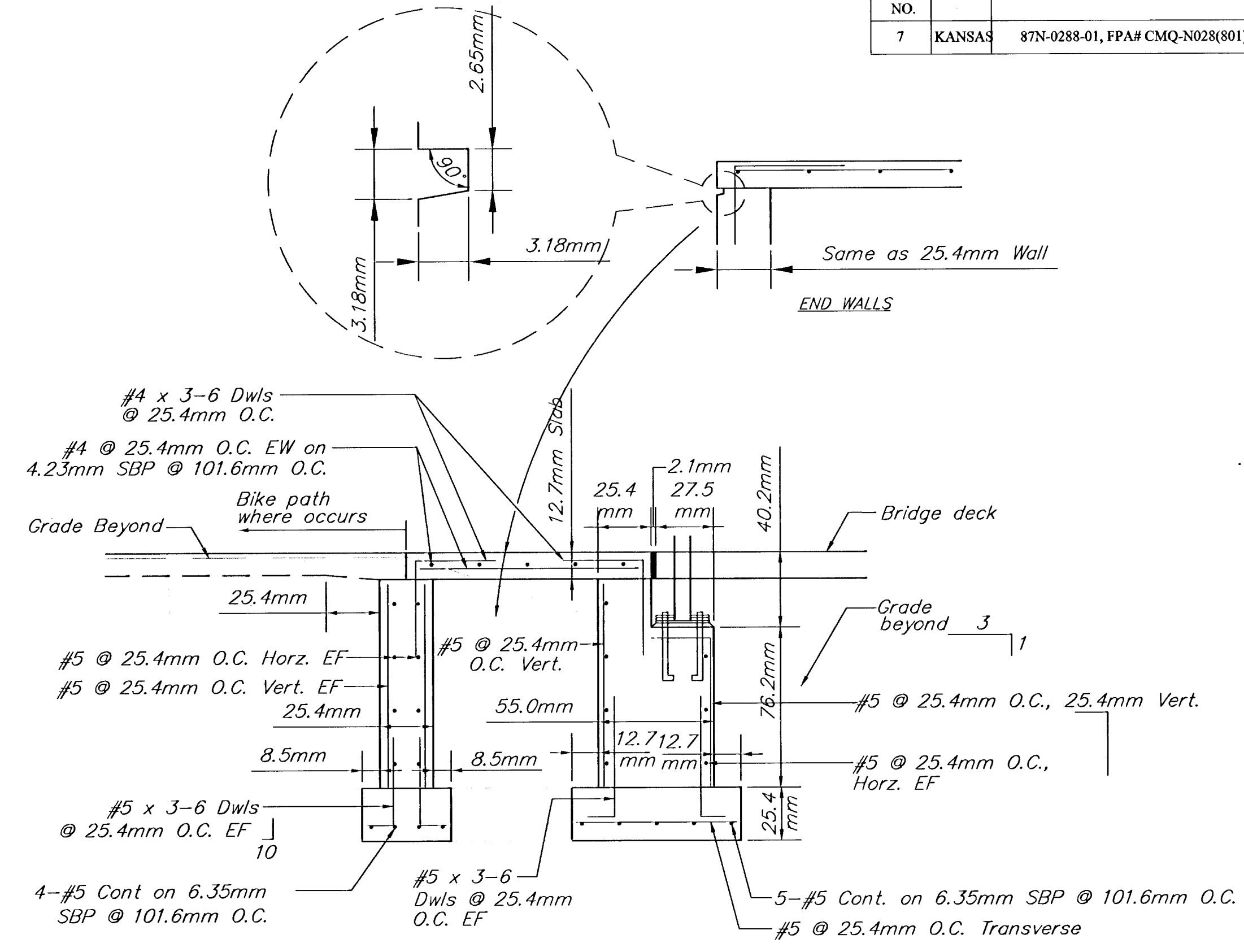
- At locations where proposed bicycle path intersects existing streets or drives with existing curb cuts and the location of the path is different from said curb cuts, contractor shall construct curb across existing cuts, sawcut and remove curb to allow for path construction at the specified location.
- All slopes to meet requirements of ADA.
- Bridge is to be prefabricated by one of the following manufacturer's:
 - Continental Bridge
 - Steadfast Bridge Co.
 - Bridge America, Inc.
- Contractor shall verify location of all utilities prior to construction.
- A detectable warning shall be installed in all wheel chair ramps. Detectable warnings shall be 610 mm by the width of the bike path (3m). Detectable warnings shall consist of truncated domes with a diameter of nominal 23mm, a height of nominal 5mm and a center to center spacing of nominal 60mm and shall contrast visually with adjoining surfaces, either light-on-dark, or dark-on-light. The material used to provide contrast shall be an integral part of the walking surface.



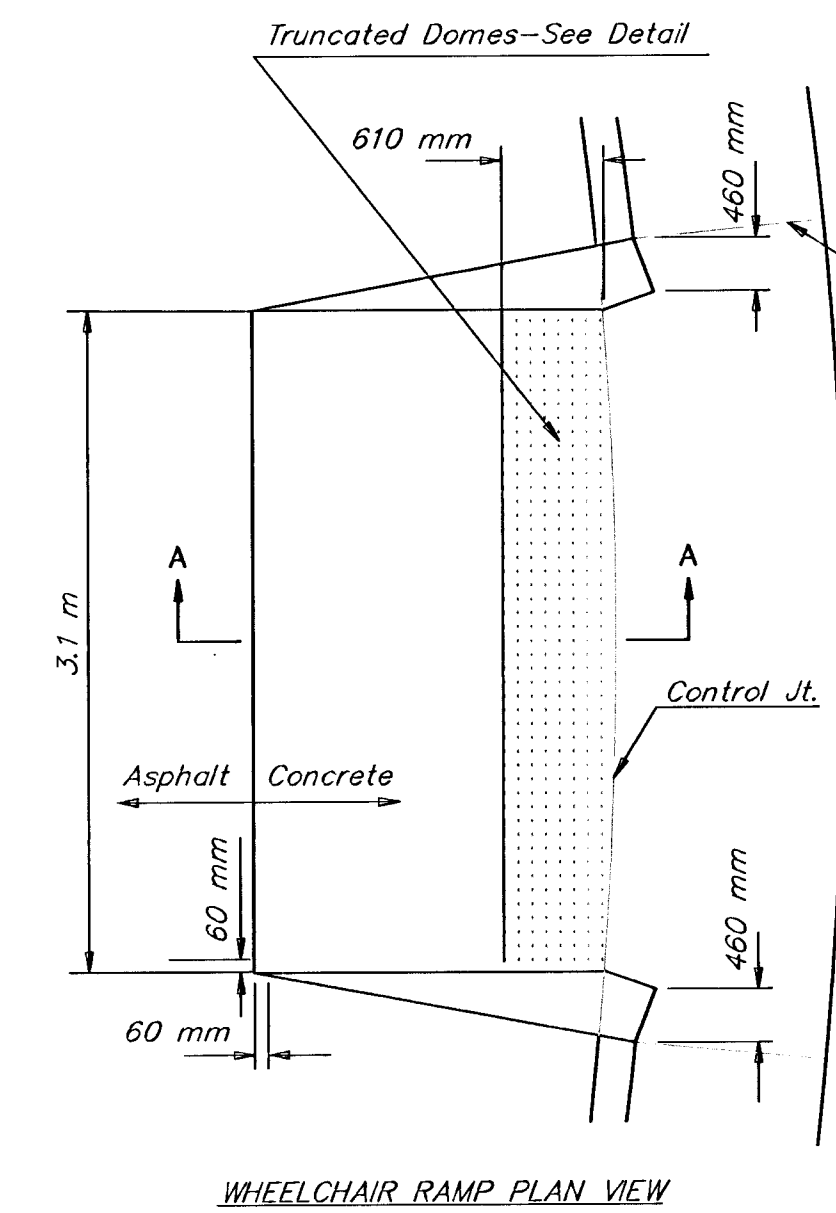
**TYPICAL SECTION
TRANSITION FROM TOP TO BOTTOM OF BANK
NO SCALE**



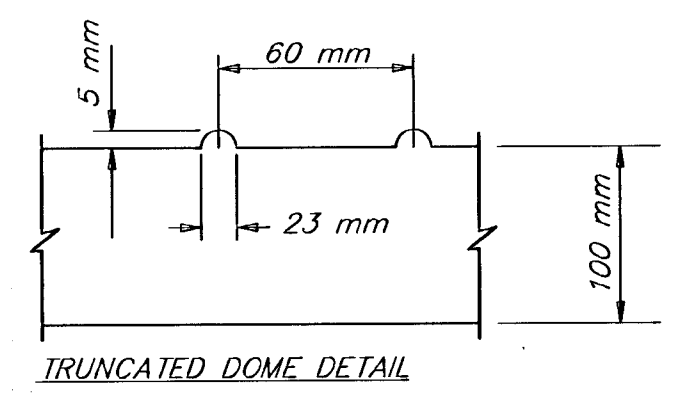
**TYPICAL DRAINAGE SWALE ACROSS PATH
NO SCALE**



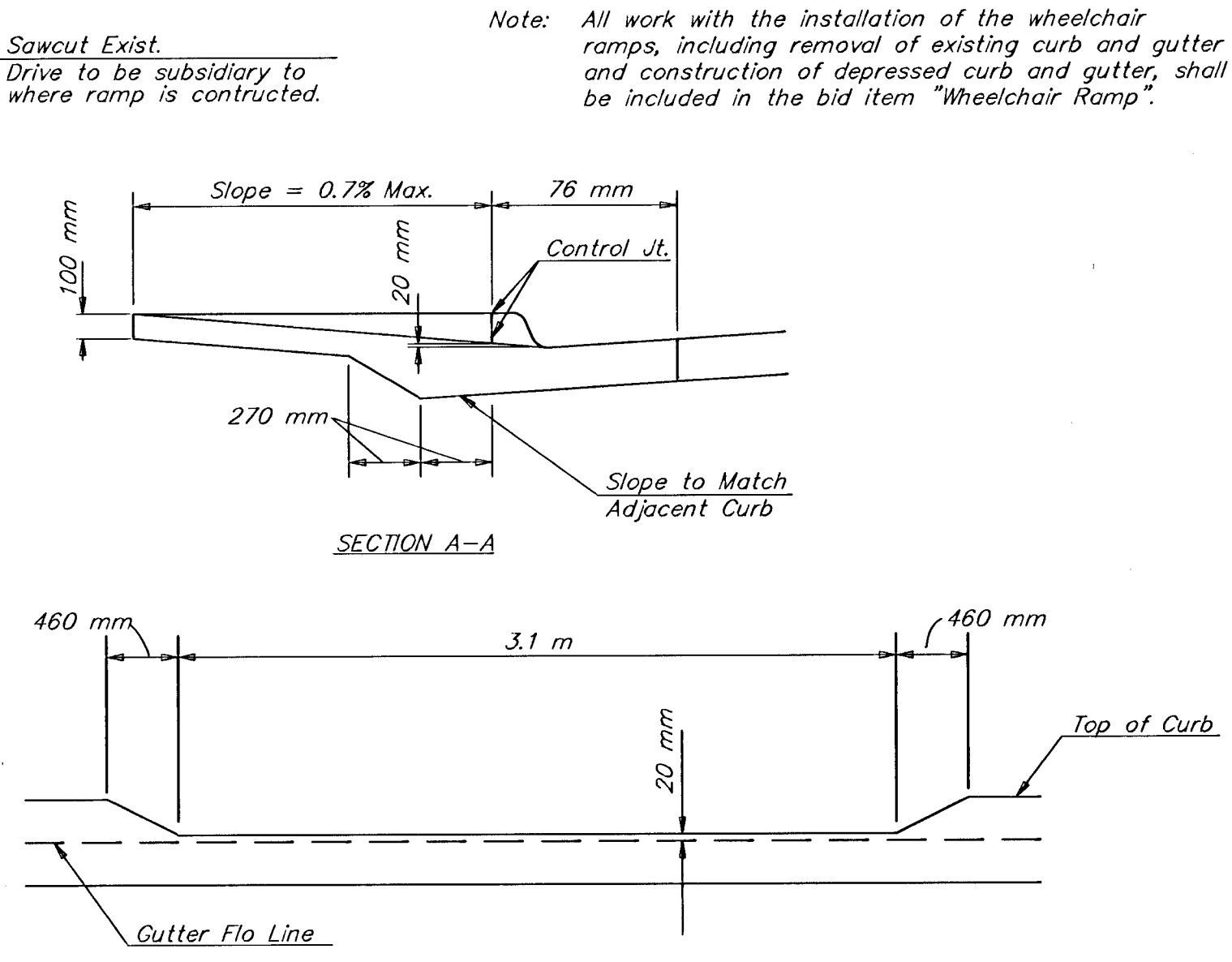
BRIDGE ABUTMENT DETAIL



WHEELCHAIR RAMP PLAN VIEW



TRUNCATED DOME DETAIL



SECTION A-A

DEPRESSED CURB DETAIL

**ACCESS RAMP DETAIL
NOT TO SCALE**

PROJECT NUMBER		AM. NO.	21st St. Bicycle Path		SHEET
87N-0288-01, FPAW CMQ-N028(801)		98200	Wichita, Kansas		2
DESIGN	DRAWN	FILE	DATE	SCALE	REVISED
rr	mp	02-tp-sect.	06-25-01	none	18