

REGENCY LAKES COMMERCIAL 2ND ADDITION

AN ADDITION TO WICHITA, SEDGWICK COUNTY, KANSAS

N.W. COR. S.E. 1/4
SEC. 4, T27S, R2E

COORDINATE LIST		
POINT	NORTH	EAST
1	50,050.4762	49,454.3154
2	50,032.9319	48,449.4588
3	50,817.8667	48,439.4485
4	51,054.8374	48,436.4369
5	51,057.0504	48,561.4074
6	50,835.4212	49,444.3064

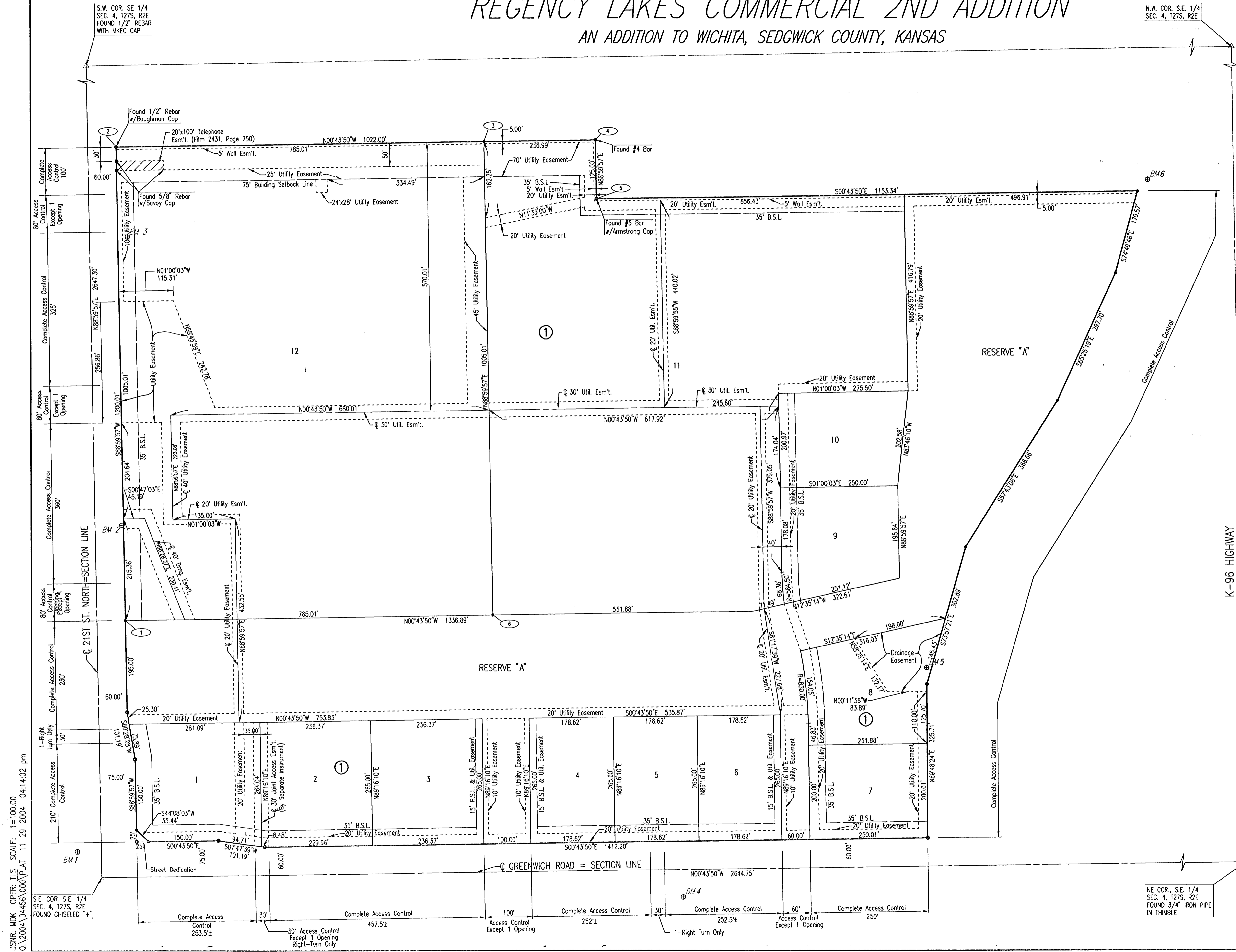
① = COORDINATE POINT NO.

SCALE: 1"=100'

- = FOUND #5 BAR W/MKEC CAP (UNLESS OTHERWISE NOTED)
- = SET 1/2" REBAR W/ PEC CAP (UNLESS OTHERWISE NOTED)

BENCHMARKS:

- C.O.W. Disc in Conc. Base R.R. Signal W. Side Greenwich
± 1/2 Mile S. of 21st St. N. City Datum: 183.19
N.G.V.D.: 1370.59
- BM 1: Chiseled "d" Conc. base Traffic Signal at S.W. Corner 21st N. and Greenwich
City Datum: 176.16
N.G.V.D.: 1363.56
- BM 2: Chiseled "d" on headwall N.E. Corner RCBC under 21st N. 750'± W. of Greenwich
City Datum: 175.05
N.G.V.D.: 1362.45
- BM 3: R.R. Spike in 18" Locust tree, E. end row on N. Side 21st N. 1350'± W. of Greenwich
City Datum: 180.14
N.G.V.D.: 1367.54
- BM 4: W. end Bolt in Power Pole 1'± above ground at Private Dr. 2400 N. Greenwich on E. side of Rd.
City Datum: 183.80
N.G.V.D.: 1371.20
- BM 5: Chiseled "d" on W. wing wall of W. end of S. headwall RCBC under Bike Path just S. of K-96 E.B. Ramp to Greenwich 400'± from Greenwich.
City Datum: 179.97
N.G.V.D.: 1367.27
- BM 6: Chiseled "d" on S.E. Cor. RCBC under Bike Path just S. of K-96, near N.W. Cor. Property
City Datum: 182.975
N.G.V.D.: 1370.375



K-96 HIGHWAY

DSNR: MDK OPER: ILS SCALE: 1=100.00
Q:\2004\04456\000\PLAT 11-29-2004 04:14:02 pm

NE COR. S.E. 1/4
SEC. 4, T27S, R2E
FOUND 3/4" IRON PIPE
IN THIMBLE

No.	Revision	By	Date
LATERAL 6, MAIN 26 OF THE WAR INDUSTRIES SEWER PLAT JAMES L. ARMOUR, P.E. - ACTING CITY ENGINEER CITY OF WICHITA PROJECT NO. 468-83895 Professional Engineering Consultants, P.A. 303 S. TOPEKA • WICHITA, KANSAS 67202 316-262-2691 • FAX 316-262-3003			
Designed by	MDK/ALA	Job No.	35-04456-000-42
Drawn by		Date	OCTOBER 2004
			SHL 3 of 13

