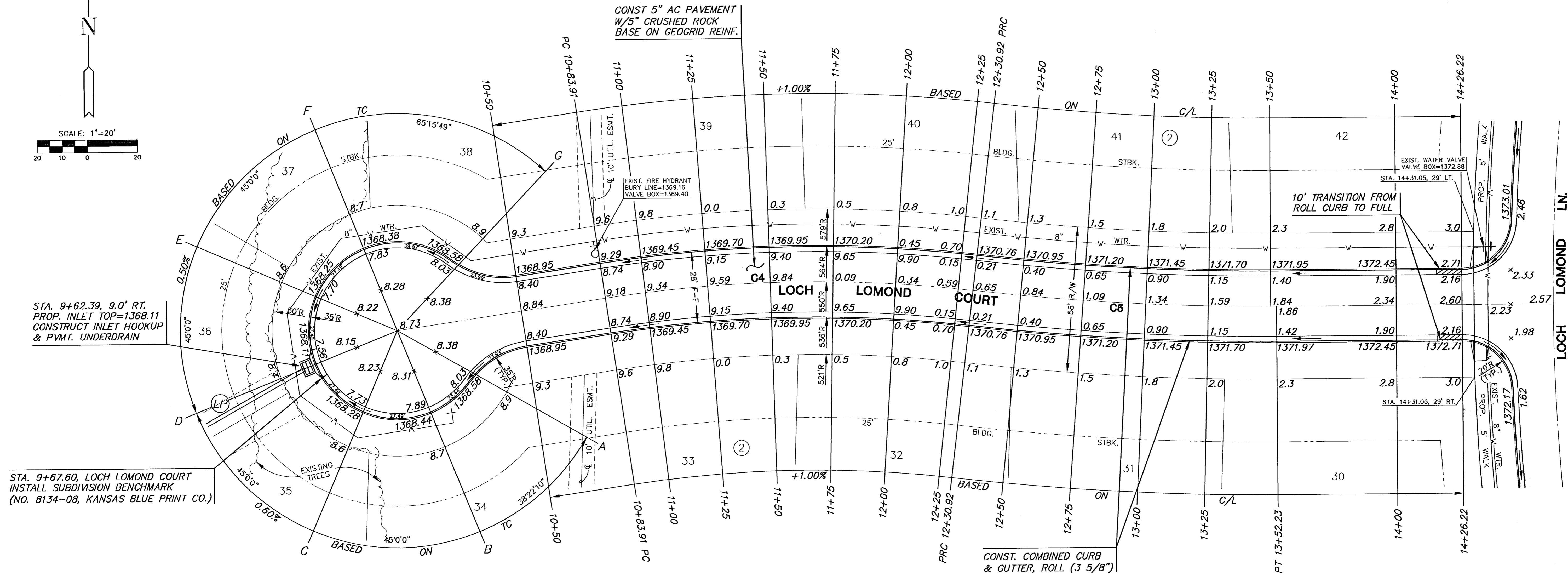
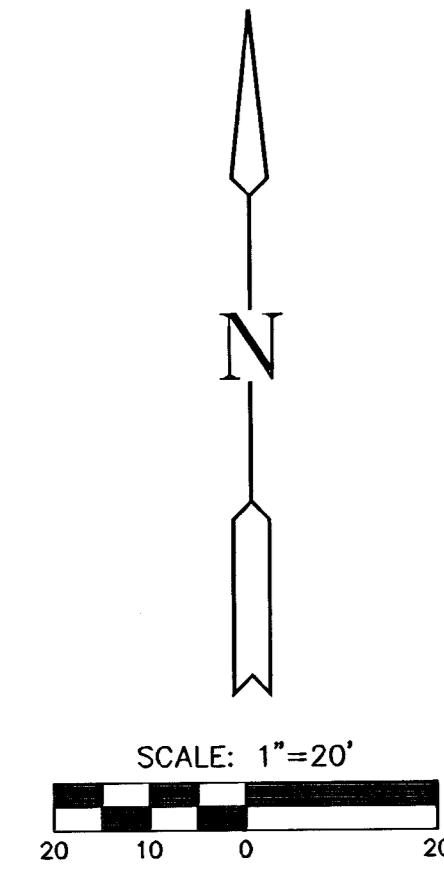


HAWTHORNE THIRD ADDITION



STA. 9+62.39, 9.0' RT.
PROP. INLET TOP=1368.11
CONSTRUCT INLET HOOKUP
& PVMT. UNDERDRAIN

STA. 9+67.60, LOCH LOMOND COURT
INSTALL SUBDIVISION BENCHMARK
(NO. 8134-08, KANSAS BLUE PRINT CO.)

HAWTHORNE THIRD ADDITION

LEGEND

⊕ STREET SIGN & SIGN LOCATION
(SEE SIGN ASSEMBLY TABLE
FOR TYPE & STATION OF SIGN)

CURVE TABLE - C4

$\Delta = 15^{\circ}18'53''$ R = 550.00' T = 73.95' L = 147.01' LC = 146.57'

CURVE DATA BASED ON CENTERLINE $\Delta/2 = 07^{\circ}39'27''$

STATION	ARC	CHORD LENGTH		DEFLECTION	TOTAL DEFLECTION
		8' Off LtCb	8' Off RtCb		
10+83.91	-	-	-	00°00'00"	00°00'00"
11+00.00	16.09'	16.73'	15.45'	00°50'17"	00°50'17"
11+25.00	25.00'	26.00'	24.00'	01°18'08"	02°08'25"
11+50.00	25.00'	26.00'	24.00'	01°18'08"	04°44'41"
11+75.00	25.00'	26.00'	24.00'	01°18'08"	06°02'48"
12+00.00	25.00'	26.00'	24.00'	01°18'08"	07°20'56"
12+25.00	25.00'	26.00'	24.00'	01°18'08"	07°39'27"
12+30.92	5.92'	6.16'	5.68'	00°18'30"	

Def/Ft = 3.12522 Min.

CURVE TABLE - C5

$\Delta = 06^{\circ}57'01''$ R = 1000.00' T = 60.73' L = 121.31' LC = 121.23'

CURVE DATA BASED ON CENTERLINE $\Delta/2 = 03^{\circ}28'31''$

STATION	ARC	CHORD LENGTH		DEFLECTION	TOTAL DEFLECTION
		8' Off LtCb	8' Off RtCb		
12+30.92	-	-	-	00°00'00"	00°00'00"
12+50.00	19.08'	18.66'	19.50'	00°32'48"	00°32'48"
12+75.00	25.00'	24.45'	25.55'	00°42'58"	01°15'46"
13+00.00	25.00'	24.45'	25.55'	00°42'58"	01°58'44"
13+25.00	25.00'	24.45'	25.55'	00°42'58"	02°41'43"
13+50.00	25.00'	24.45'	25.55'	00°42'58"	03°24'41"
13+52.23	2.23'	2.18'	2.27'	00°03'49"	03°28'30"

Def/Ft = 1.71887 Min.

NOTE:
TOP OF CURB ELEVATIONS SHOWN
ARE FOR FULL CURB. CONSTRUCT
CURB AND GUTTER AS NOTED.

NOTE:
CONTRACTOR TO COORDINATE TREE REMOVAL
/TRIMMING WITH ENGINEER/OWNER. NO
TREES SHALL BE REMOVED WITHOUT PRIOR
APPROVAL BY ENGINEER AND/OR OWNER.

HAWTHORNE THIRD ADDITION - PHASE 1
PROJECT NAME

PAVING PLANS
SHEET TITLE

DFL DESIGN BY. DMU DRAWN BY. GJA CHECKED BY.

NOVEMBER 2004 DATE 02167 JOB NO. 9 / 31 SHEET/OF