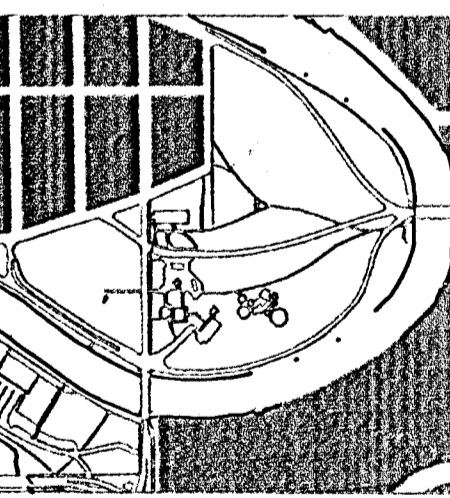


NIMS ROUNDABOUT
Central Riverside Park
Wichita, Kansas

KEY PLAN



CENTRAL RIVERSIDE PARK

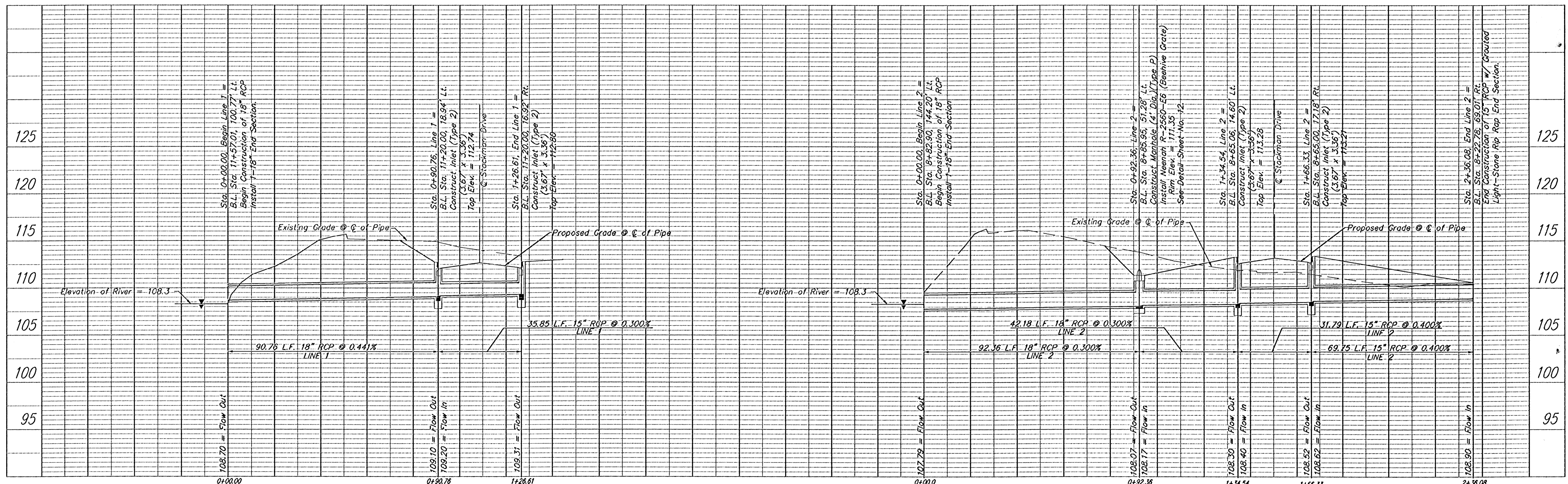
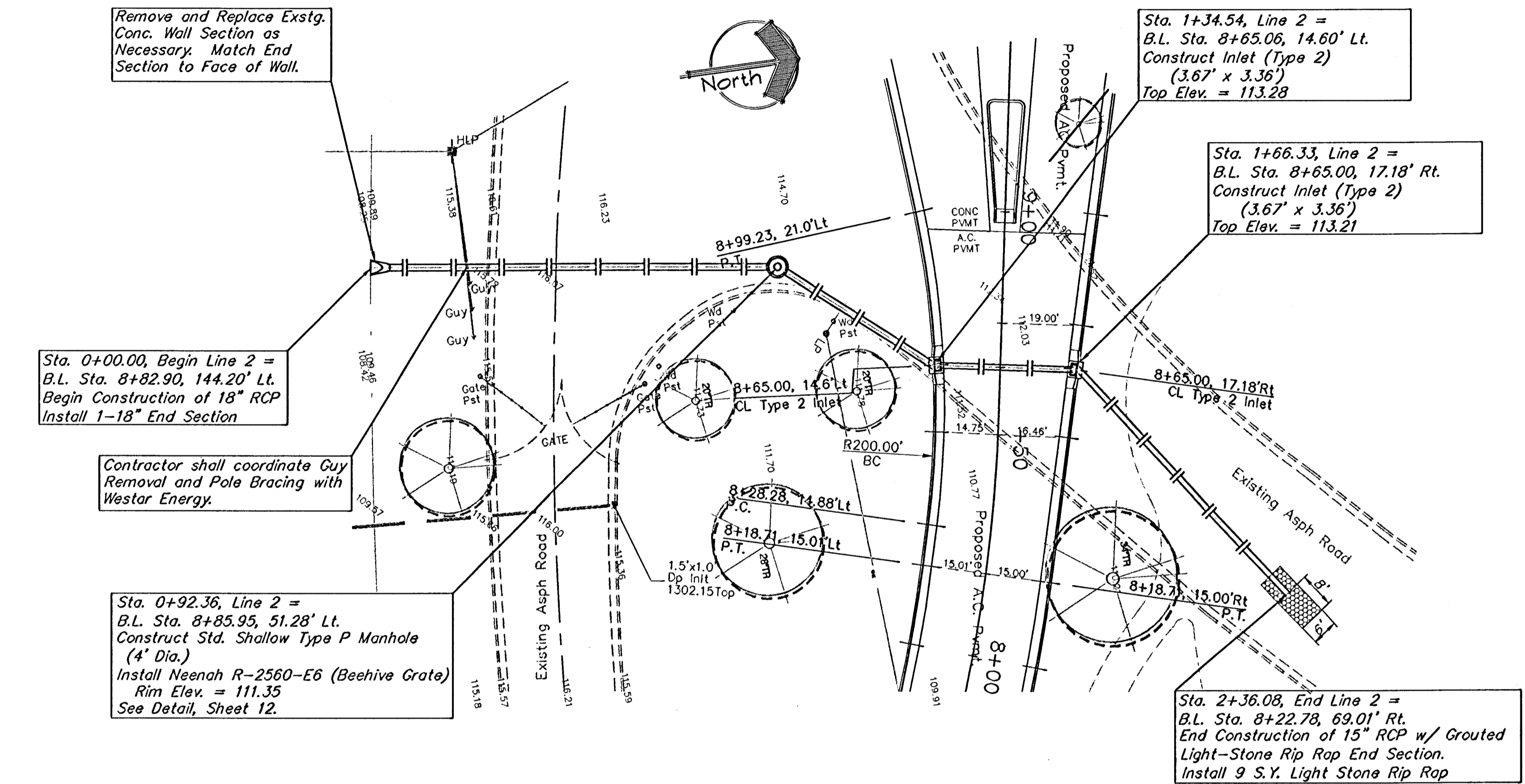
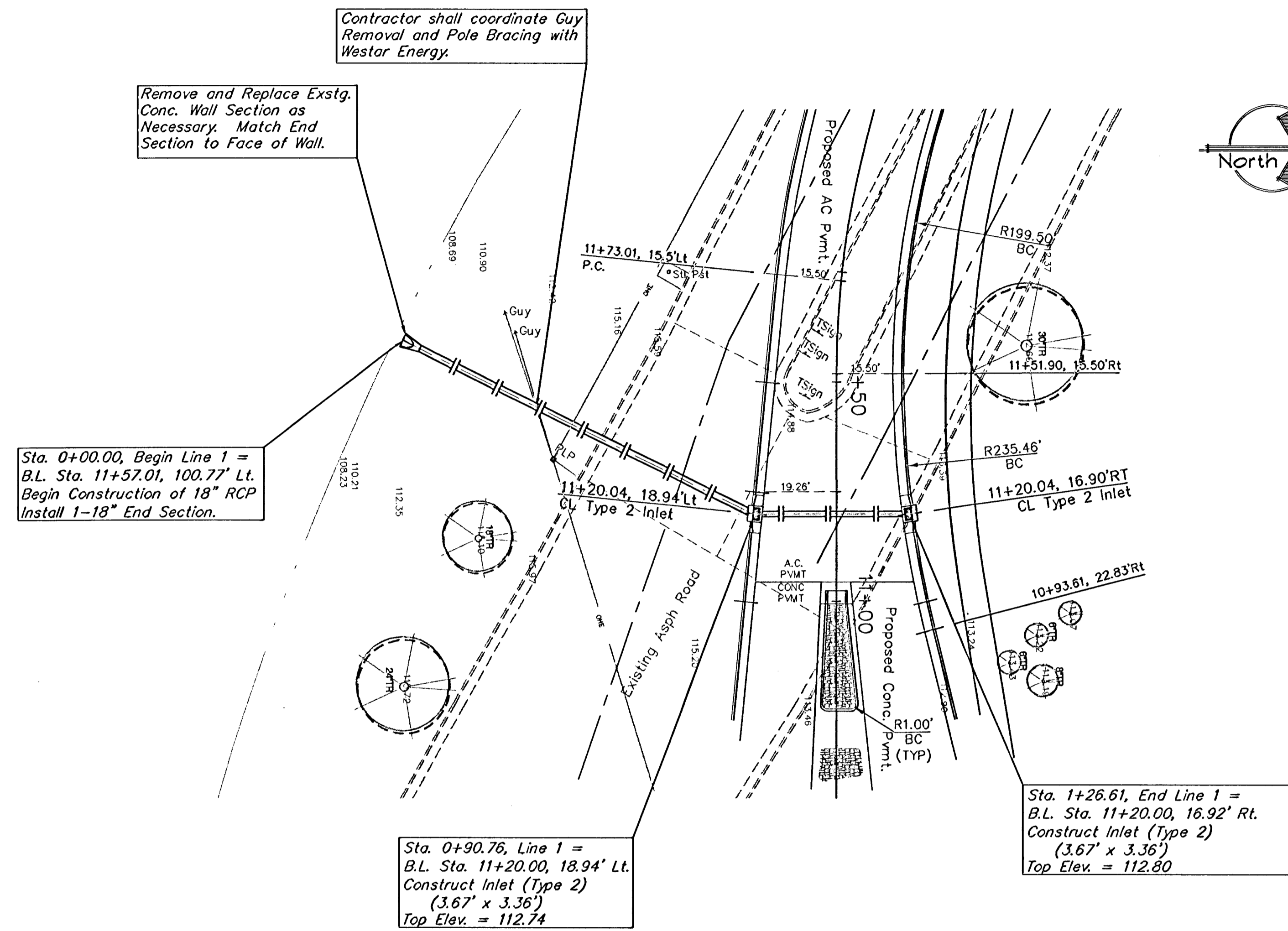
PRINTS ISSUED
August 20, 2002

Drawn by: STAFF
00-08-E798
Checked by: STAFF

NIMS STREET ROUNDABOUT - STORM
WATER SEWER PLAN & PROFILE

SECTION THREE
8 of 22

BENCHMARK:
BM #1 - City of Wichita Bench Mark Disc on the Sidewalk at the North West Corner of the Murdock Bridge.
Elev. = 123.93 (City Datum)



STORM WATER SEWER PLAN/PROFILES
NIMS STREET ROUNDABOUT @ STACKMAN DRIVE

SCALE: 1" = 20'-0" Horizontal
1" = 5'-0" Vertical