

BENCHMARKS:

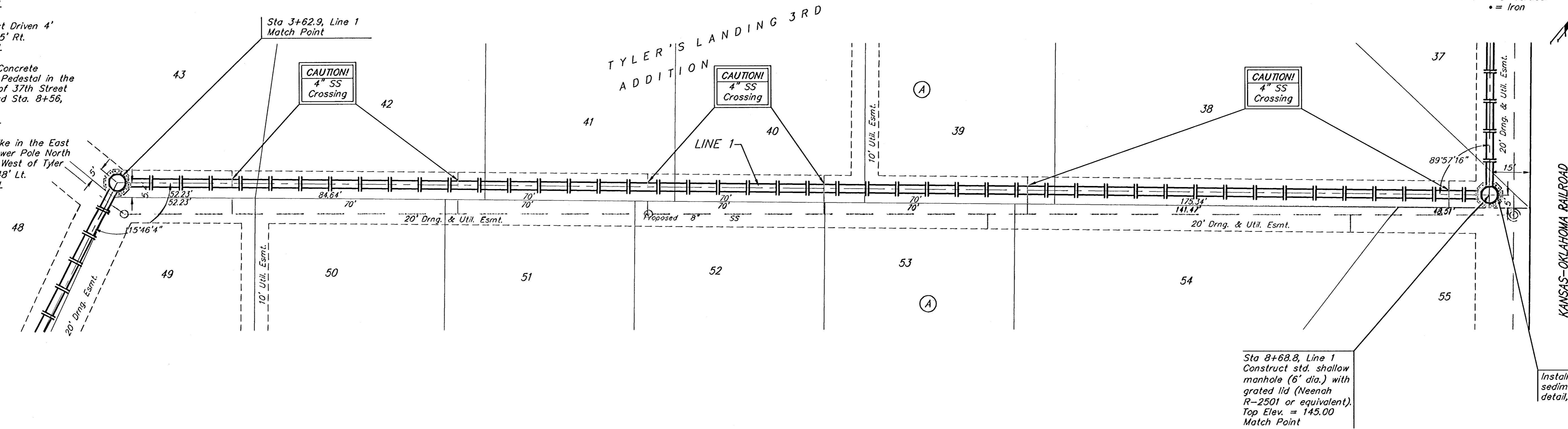
BM #1: "X" on the West End of the Steel Casing Pipe at the Railroad Crossing South of 37th Street North Sta. 25+90, 41' Rt. Elev. = 1336.58 MSL

BM #2: Steel T-Post Driven 4' Deep Sta. 18+00, 25' Rt. Elev. = 1337.73 MSL

BM #3: "U" in the Concrete Footing of the SBC Pedestal in the South West Corner of 37th Street North and Tyler Road Sta. 8+56, 95' Rt. Elev. = 1342.17 MSL

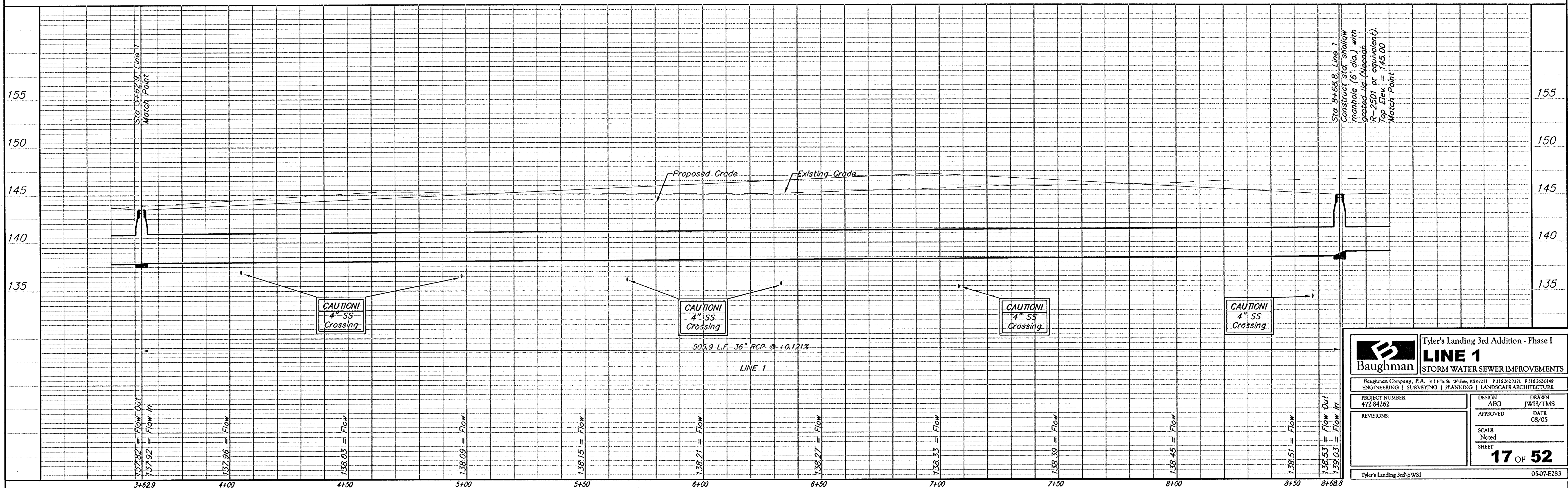
BM #4: Railroad Spike in the East Face of the 2nd Power Pole North of 37th Street and West of Tyler Road Sta. 94+24, 48' Lt. Elev. = 1342.85 MSL

Scale: 1" = 20' Horizontal
1" = 5' Vertical
• = Iron



Sta 8+68.8, Line 1
Construct std. shallow manhole (6' dia.) with grated lid (Neehah R-2501 or equivalent). Top Elev. = 145.00 Match Point

Install hay bale sediment barrier per detail, sheet 37.



		Tyler's Landing 3rd Addition - Phase I	
		LINE 1	
ENGINEERING SURVEYING PLANNING LANDSCAPE ARCHITECTURE		PROJECT NUMBER 472-84262	
DESIGN AEG		DRAWN JWH/TMS	
APPROVED		DATE 08/05	
SCALE Noted		SHEET 17 OF 52	
Tyler's Landing 3rd SWS1		0507-E283	