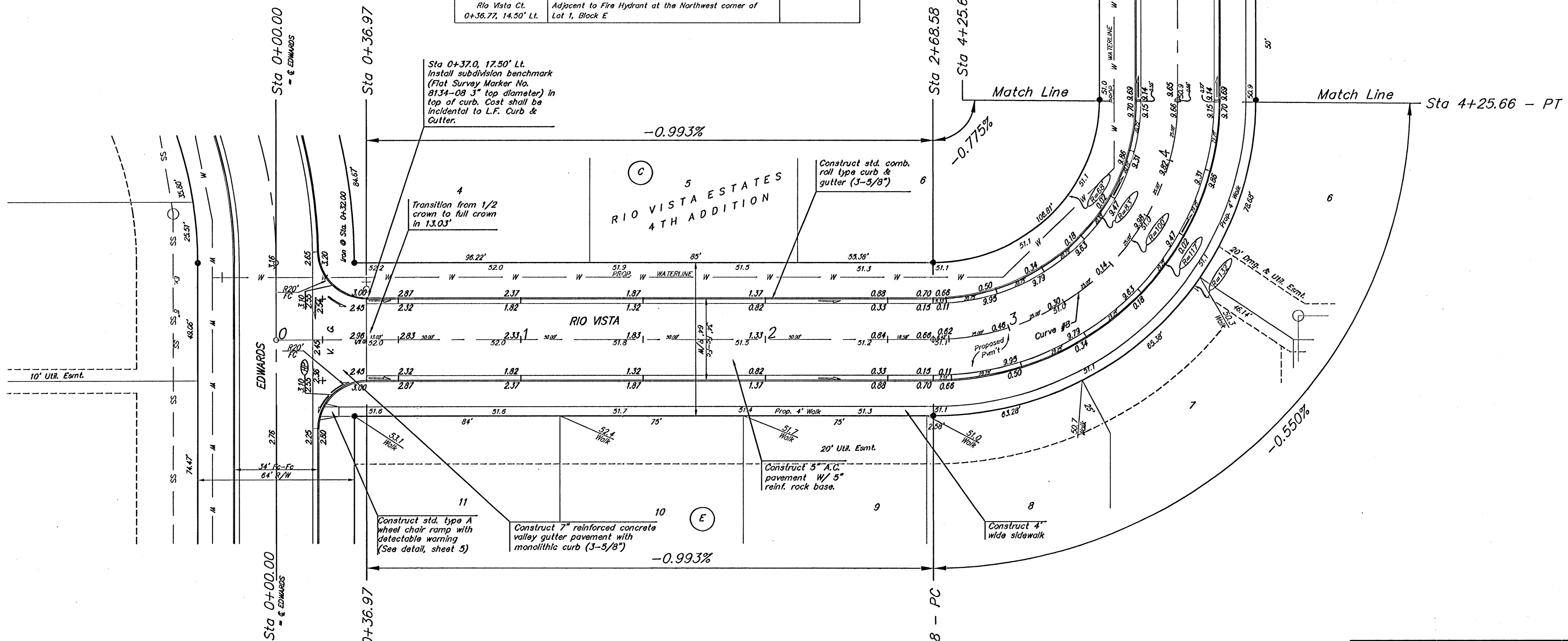


BENCHMARK:
 R.R. SPIKE IN HLP, 150' E. & 30'
 S. OF THE S.W. COR., S.E. 1/4,
 SEC. 12-26-1W.
 ELEV. = 1338.98 M.S.L.
 ELEV. = 151.56 City Datum

"O" IN OPEN, TOP FLANGE OF FIRE
 HYDRANT AT THE S.W. CORNER
 OF 61ST. ST. N. & MERIDIAN AVE.
 ELEV. = 1339.16 M.S.L.
 ELEV. = 151.76 City Datum

Subdivision Bench Marks		
Street & Station	Location Description	Elevation
Rio Vista 0+37.0, 17.50' Lt.	Adjacent to Fire Hydrant at the Southwest corner of Lot 4, Block C	
W. 62nd St. North 0+20.0, 17.50' Lt.	Adjacent to Fire Hydrant at the Southwest corner of Lot 18, Block A	
Richmond 15+15.62, 17.50' Lt.	Adjacent to Fire Hydrant at the Northeast corner of Lot 1, Block A	
Richmond Ct. 0+37.71, 14.50' Lt.	Adjacent to Fire Hydrant at the Northeast corner of Lot 13, Block A	
Richmond 8+32.84, 17.50' Lt.	Adjacent to Fire Hydrant at the Northeast corner of Lot 9, Block C	
Rio Vista Ct. 0+36.77, 14.50' Lt.	Adjacent to Fire Hydrant at the Northwest corner of Lot 1, Block E	

Scale: 1" = 20'
 = Iron



Curve #3
 Curve Data Based on Centerline
 Rad. = 100' Delta = 89°37'54" Tangent = 39.35'
 Arc = 157.08' L.C. = 140.96' Def/Fl. = 17.11728 Min.

Station	Arc	FACE CHORD LENGTHS		Def.	T. Def.
		8' LL	8' RT		
2+68.58	-	0.00	0.00	0.00	0.00
2+75.00	6.42'	4.79'	7.93'	1'43.54"	1'43.54"
3+00.00	25.00'	18.62'	31.04'	7'07.56"	8'57.50"
3+25.00	25.00'	18.62'	31.04'	7'07.56"	8'57.50"
3+50.00	25.00'	18.62'	31.04'	7'07.56"	8'57.50"
3+75.00	25.00'	18.62'	31.04'	7'07.56"	8'57.50"
4+00.00	25.00'	18.62'	31.04'	7'07.56"	8'57.50"
4+25.00	25.00'	18.62'	31.04'	7'07.56"	8'57.50"
4+25.66	0.66'	0.49'	0.82'	0'11.18"	4'48.47"

Adjust water valve boxes as needed to grade. Incidental to 'Site Clearing and Restoration'.

Contractor to remove existing trees, fence, etc. as needed to complete paving project. Removal shall be incidental to bid item 'Site Clearing and Restoration'.

NOTE: ROLL TYPE CURB & GUTTER TO BE CONSTRUCTED ON THE PAVEMENT SHOWN ON THIS SHEET. TOP OF CURB ELEVATIONS ARE GIVEN FOR FULL HEIGHT CURB.

		Rio Vista Estates 4th Addition Rio Vista STA 0+00 TO STA 4+25.66	
Baughman Company, P.A. 315 Elm St. Wexford, PA 15084 ENGINEERING SURVEYING PLANNING LANDSCAPE ARCHITECTURE		DESIGN MWS	DRAWN JWH
PROJECT NUMBER 472-84055	REVISIONS	APPROVED DATE 7/05	SCALE Noted SHEET 13 OF 51
Rio Vista V01.dwg		05-03-E204	