

General Notes

1. Contractor will be required to provide notice to utility companies a minimum of forty-eight (48) hours prior to any excavation, as follows:

Kansas One-Call 687-2470

The Contractor must notify the following in case of an emergency:

- Cox Communications 262-4270
- Kansas Gas Service 1-888-482-4950
- Westar Energy 383-8650
- Aquila Energy 1-800-303-0357
- SBC 268-2245
- City of Wichita Water Dept. 268-4563
- City of Wichita Sewer Maint. 268-4024
- City of Wichita Storm Sewer Maint. 268-4090
- City of Wichita Traffic Maint. 268-4034
- Conoco Pipeline Co. 1-800-231-2551
- Southern Star Pipeline Co. 529-6600
- Phillips Pipeline Co. 1-800-766-8230

2. Utility service lines, poles, valve boxes, meters, and etcetera are to be adjusted as necessary by others prior to construction unless the plans specifically call for their adjustment by the Contractor or unless the plans specifically identify a utility to be adjusted by its owner during construction. Existing utilities and their location, as shown on the plans, represent the best information obtainable for design. The Contractor will be required to work around existing utilities within the right-of-way which do not conflict with proposed construction.

3. Rubble from the removal of miscellaneous structures and excess excavation which is to be wasted shall be disposed of on sites to be provided by the Contractor. These sites shall be approved by the Engineer as to suitability, appearance and site location. Locations, in the opinion of the Engineer, that will leave an unsightly appearance will not be approved. All disposal sites must be approved by the Kansas Department of Health and Environment. Material either stockpiled or disposed of in a flood plain would require a Kansas State Board of Agriculture permit. Any material dumped in waters of the United States or wetlands is subject to U.S. Corps. of Engineers permitting regulations. Any material buried or stockpiled beyond approved construction limits would require additional archaeological investigations unless buried in a previously approved borrow location.

4. Trees and shrubs in public right-of-way which are in direct conflict with proposed new construction shall be removed by the Contractor with the Engineer's approval. Trees and shrubs which are not in direct conflict with proposed new construction shall be saved and protected from damage.

5. The Contractor shall give all property owners and/or tenants of developed property abutting the construction of this project a minimum of ten (10) days notice prior to start of construction.

6. The Contractor shall be responsible for preserving property irons. The Contractor will be required to re-establish any property irons which are damaged or destroyed by his construction operations. Such irons shall be re-established by a licensed land surveyor in accordance with state laws.

7. All existing and proposed erosion control measures including silt fencing, erosion control mat, straw bales, inlet barriers, and const. entrance shall be maintained throughout construction by the contractor and until project is accepted by the City of Wichita. The on-site engineer shall complete weekly reports on the status of erosion control measures. The contractor shall be required to comply with maintenance and/or replacement of erosion control measures as determined by the on-site engineer until project is accepted by City of Wichita. Maintenance and/or replacement of erosion control measures to be paid by L.S. bid item "Erosion Control BMP's."

8. A saw cut of at least one-half the depth of existing surface courses or one-fourth the depth of the existing total pavement thickness shall be provided at locations where proposed construction abuts the existing surface course or pavement for which partial removal of that surface or pavement is required. Sawed joint to facilitate removal within three (3) feet of existing joints will not be permitted and for such instances the limits of removal shall extend to the existing joint. Such saw cuts will not be paid for directly and this cost shall be considered as subsidiary to the removal of the surface or pavement.

9. The contractor shall adjust valve boxes as necessary to match proposed grade. Cost to be included in bid item, "Site Clearing & Restoration."

10. At conclusion of construction, an as-built survey will be completed by the engineer. The contractor will be required to finish and smooth grade at all locations as necessary that are not within ±0.2' of plan grade. The contractor shall include all costs associated with the regrading and/or remobilization in the bid item "Mass Grading."

11. All excess excavation shall remain on-site and shall be stockpiled or spread at a location determined by the engineer.

12. The developer for this project is Jim Fouts, 729-8904.

13. All areas disturbed during construction within Reserves and adjacent to existing pavement shall be seeded, mulched, and fertilized as follows unless otherwise noted (Permanent Seeding):

Seed: Kansas Premium Fescue Blend: 8 lbs./1000 sq. ft.
 Mulch: Prairie Hay: 2 tons/acre
 Fertilizer: 12-24-12: 850 lbs./acre

All other areas disturbed during construction shall be seeded and mulched as follows (Temporary Seeding):

Seed: Rye Grass: 5 lbs./1000 Sq. Ft.
 Mulch: Prairie Hay: 2 tons/acre

All costs associated with seeding, mulching, and fertilizing shall be included in bid item "Project Seeding." All seeding operations shall conform to City of Wichita Standard Specifications.

14. Contractor shall phase construction or construct temporary access road to residents on 31st St. to allow for access at all times during construction. Any additional cost to do so shall be included in bid item "Site Clearing and Restoration."

15. Contractor shall be responsible for obtaining permit from KDOT for construction on SWS Line 3 on northeast side of Interstate 235 fence. Any fees involved shall be incidental to project cost.

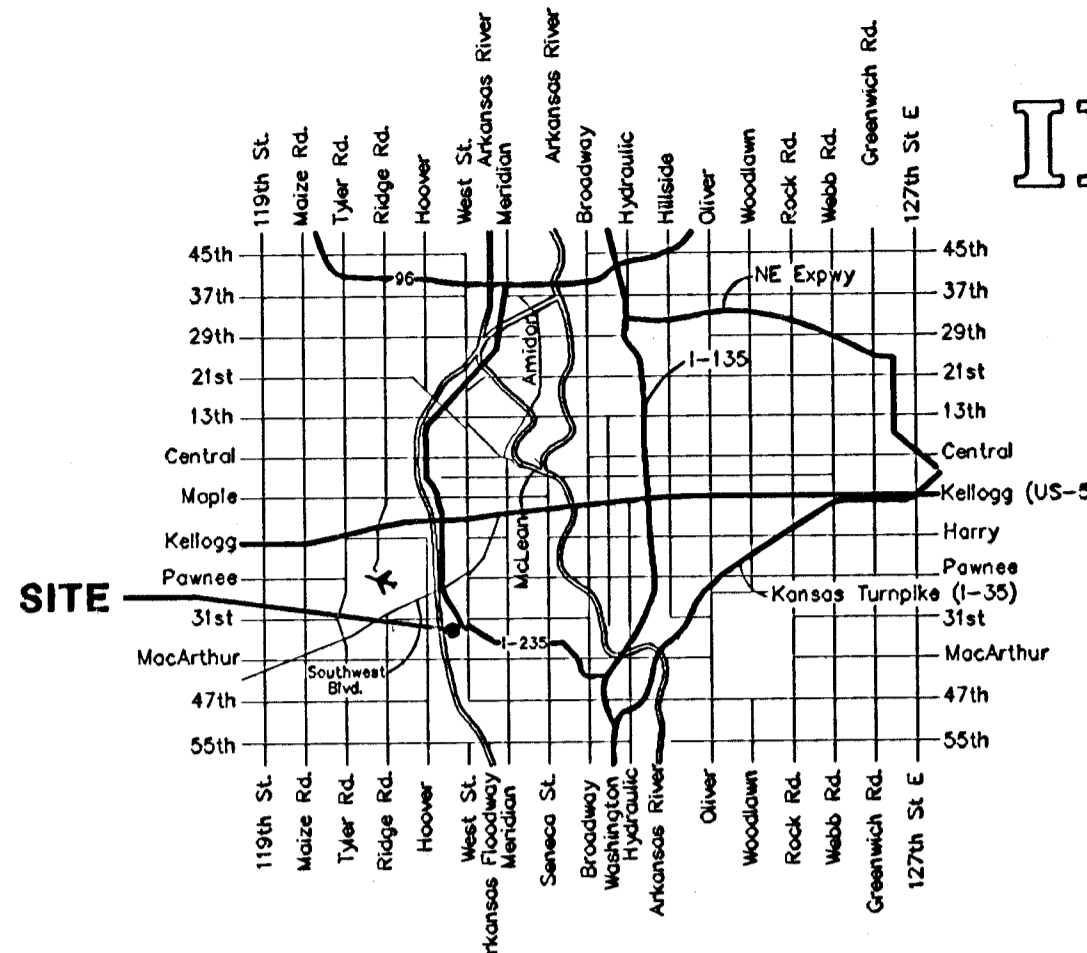
Benchmarks

City of Wichita Benchmark located 41.60' North and 69.00' East of the Centerlines of Hoover and MacArthur (39th St. South)

Elevation = 121.22 (City Datum)

City of Wichita Benchmark located at East end of Bridge over the Big Ditch on MacArthur in the West bound lane.

Elevation = 116.52 (City Datum)



Vicinity Map

PAVING AND INCIDENTAL SWS IMPROVEMENTS

to serve

BLUE LAKE ADDITION PHASE I

Bluelake, 31st St. S., and Bolin Drive: from the south line of Lot 15, Block D, north, east and south to Sabin
Sabin, from the southwest line of Bolin Drive, south to the north line of Lot 60, Block D
Bluelake Ct. (Lots 84-100, Block A), from the west line of Bluelake, west to and including the cul-de-sac
Bluelake Ct. (Lots 101-117, Block A), from the west line of Bluelake, west to and including the cul-de-sac
Sabin Ct., from the west line of Sabin, west to and including the cul-de-sac, and south to and including the cul-de-sac

CITY OF WICHITA, KANSAS

James L. Armour, P.E. Acting City Engineer

Project Number

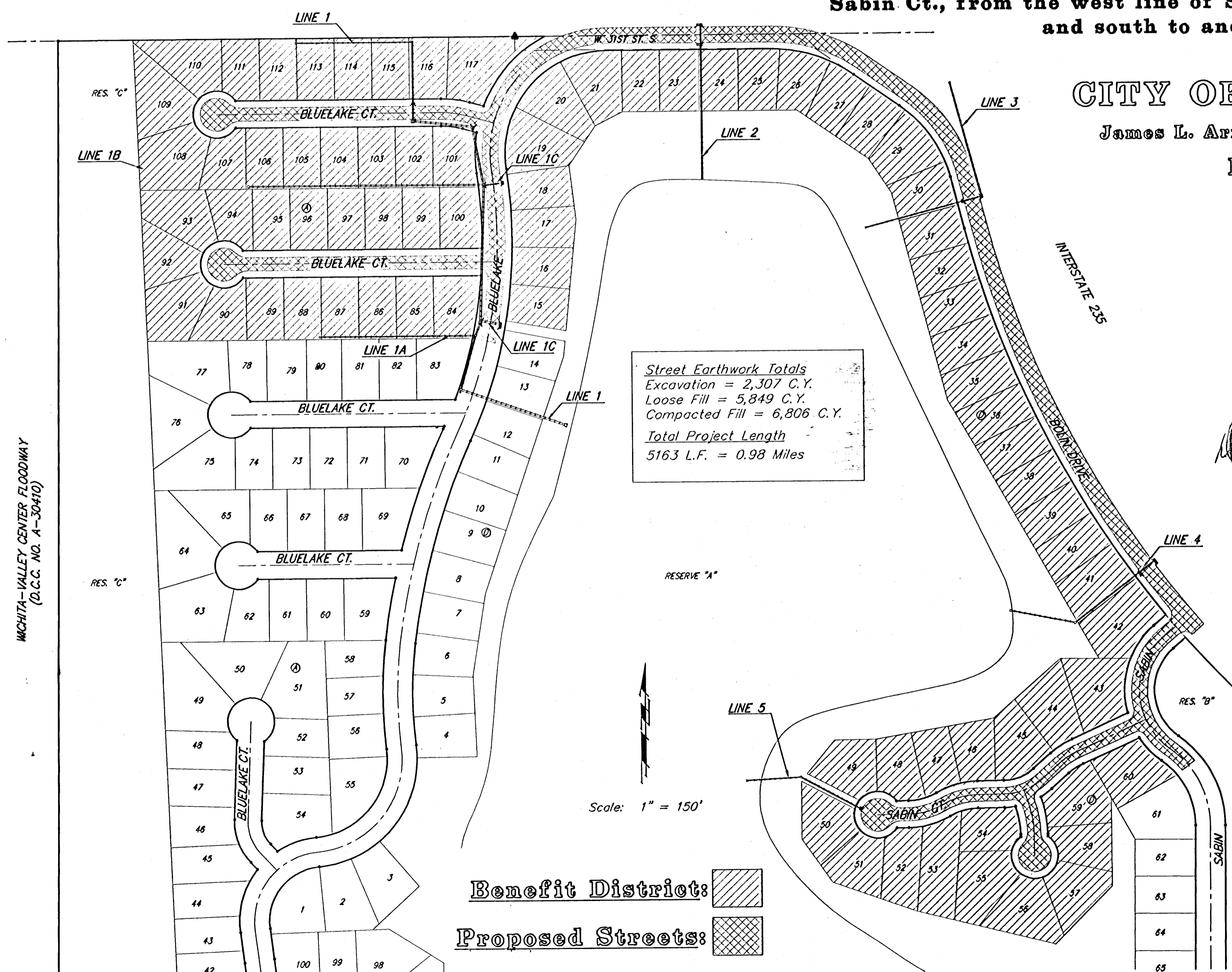
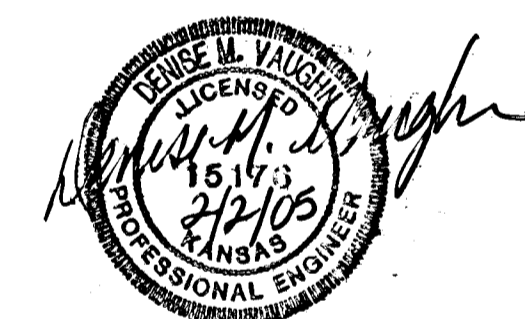
472-84074

O.C.A. Number

765905

Sheet Index

Title Sheet	1
35' Pavement Detail	2
29' Pavement Detail	3
Sign Detail	4
Standard Drive Detail	5
Miscellaneous Details	6
Bluelake/31st St. S.	7-9
Bluelake Ct. (84-100, A)	10-11
Bluelake Ct. (101-117, A)	12-13
Sabin Ct. (43-53, D)	14-15
Sabin Ct. (54-59, D)	16
Sabin	17
Bolin Drive	18-20
Line 1	21-24
Line 1A	25
Line 1B	26
Line 2	27
Line 3	28-29
Line 4	30
Line 5	31
Std. Type 1 Double Inlet Detail	32
Std. Type 1A Single Inlet Detail	33
Std. Type 1A Double Inlet Detail	34
Standard Manhole Detail	35
MH Ring and Cover Detail	36
Special Yard Inlet Detail	37
Standard Drop Inlet Detail	38
RC Headwall Detail	39
Mass Grading Plan	40-44
Erosion Control Plan	45-49
Erosion Control Details	50-53
Street X-Sections	54-73
Copy of Plat	74-75



Street Earthwork Totals
 Excavation = 2,307 C.Y.
 Loose Fill = 5,849 C.Y.
 Compacted Fill = 6,806 C.Y.
Total Project Length
 5163 L.F. = 0.98 Miles

Benefit District: [Hatched Box]
Proposed Streets: [Cross-hatched Box]



Baughman Company, P.A. 315 Ella St. Wichita, KS 67211 P 3162627271 F 3162620145
 ENGINEERING | SURVEYING | PLANNING | LANDSCAPE ARCHITECTURE