

Benchmarks:

City of Wichita Benchmark located 41.60' North and 69.00' East of the Centerlines of Hoover and MacArthur (39th St. South)

Elevation = 121.22 (City Datum)

City of Wichita Benchmark located at East end of Bridge over the Big Ditch on MacArthur in the West bound lane.

Elevation = 116.52 (City Datum)



Scale: 1" = 20' Horizontal
• = Iron

P.V.I.
Elev. = 101.90
No V.C.

P.V.I.
Elev. = 103.30
No V.C.

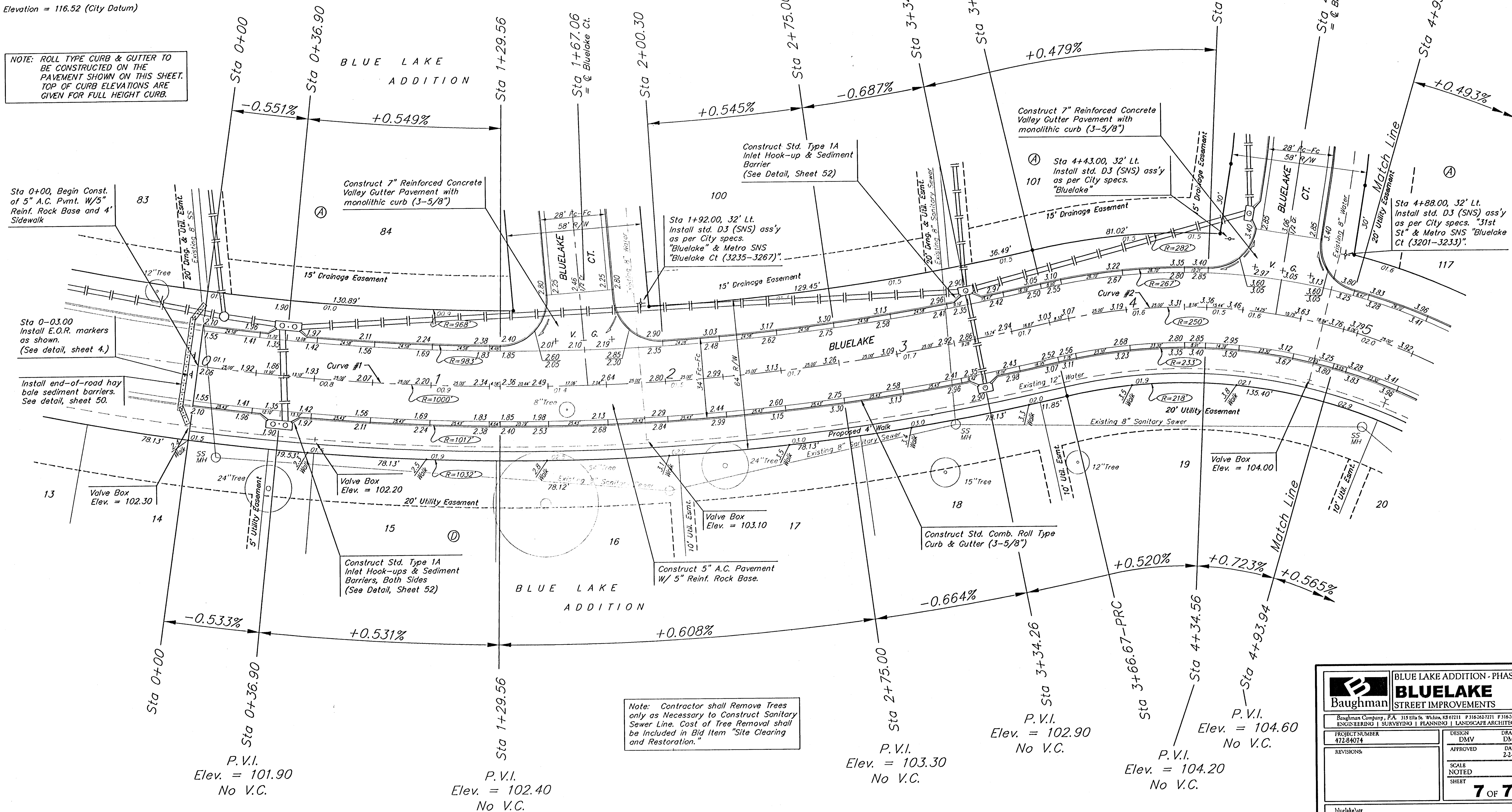
P.V.I.
Elev. = 102.90
No V.C.

NOTE: ROLL TYPE CURB & GUTTER TO BE CONSTRUCTED ON THE PAVEMENT SHOWN ON THIS SHEET. TOP OF CURB ELEVATIONS ARE GIVEN FOR FULL HEIGHT CURB.

Sta 0+00, Begin Const. of 5" A.C. Pmnt. W/5" Reinf. Rock Base and 4" Sidewalk

Sta 0-03.00 Install E.O.R. markers as shown. (See detail, sheet 4.)

Install end-of-road hay bale sediment barriers. See detail, sheet 50.



P.V.I.
Elev. = 101.90
No V.C.

P.V.I.
Elev. = 102.40
No V.C.

P.V.I.
Elev. = 103.30
No V.C.

P.V.I.
Elev. = 102.90
No V.C.

P.V.I.
Elev. = 104.20
No V.C.

P.V.I.
Elev. = 104.60
No V.C.

Note: Contractor shall Remove Trees only as Necessary to Construct Sanitary Sewer Line. Cost of Tree Removal shall be Included in Bid Item "Site Clearing and Restoration."

BLUE LAKE ADDITION - PHASE 1
BLUETAKE
 STREET IMPROVEMENTS

Baughman
 Baughman Company, P.A. 315 Ella St. Wichita, KS 67211 P 316-262-1149 F 316-262-1149
 ENGINEERING | SURVEYING | PLANNING | LANDSCAPE ARCHITECTURE

PROJECT NUMBER 472-84074	DESIGN DMV	DRAWN DMV
REVISIONS	APPROVED	DATE 2-2-05
SCALE NOTED		SHEET 7 OF 75

bluelake.net