

**Benchmarks:**

City of Wichita Benchmark located 41.60' North and 69.00' East of the Centerlines of Hoover and MacArthur (39th St. South)

Elevation = 121.22 (City Datum)

City of Wichita Benchmark located at East end of Bridge over the Big Ditch on MacArthur in the West bound lane.

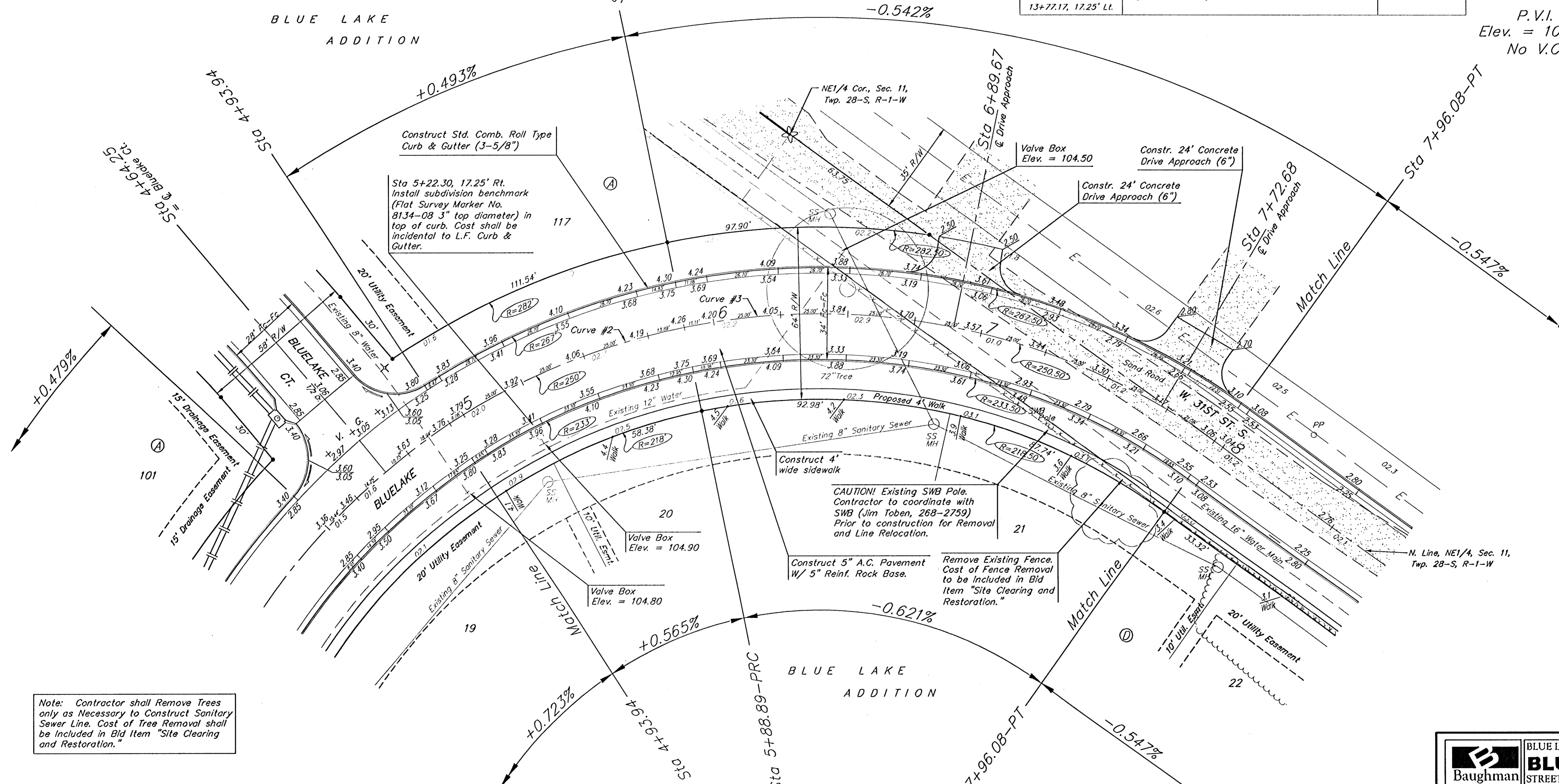
Elevation = 116.52 (City Datum)

P.V.I.  
Elev. = 104.30  
No V.C.

Street & Station	Location Description	Elevation
Bluelake 5+22.30, 17.25' Rt.	Adjacent to Fire Hydrant between Lots 19-20, Block D	
Bluelake Ct 3+02.50, 14.25' Lt.	Adjacent to Fire Hydrant between Lots 97-98, Block A	
Bluelake Ct 3+32.85, 14.25' Lt.	Adjacent to Fire Hydrant between Lots 114-115, Block A	
Sabin Ct 2+93.60, 14.25' Rt.	Adjacent to Fire Hydrant at W. End of W. Curb Return of Sabin Ct & Sabin Ct	
Bolin Drive 0-04.91, 17.25' Lt.	Adjacent to Fire Hydrant at S. End of S. Curb Return of Bolin Drive & Sabin	
Bolin Drive 5+69.31, 17.25' Lt.	Adjacent to Fire Hydrant between Lots 36-37, Block D	
Bolin Drive 13+77.17, 17.25' Lt.	Adjacent to Fire Hydrant between Lots 27-28, Block D	

Scale: 1" = 20' Horizontal  
• = Iron

P.V.I.  
Elev. = 103.10  
No V.C.



Note: Contractor shall Remove Trees only as Necessary to Construct Sanitary Sewer Line. Cost of Tree Removal shall be Included in Bid Item "Site Clearing and Restoration."

NOTE: ROLL TYPE CURB & GUTTER TO BE CONSTRUCTED ON THE PAVEMENT SHOWN ON THIS SHEET. TOP OF CURB ELEVATIONS ARE GIVEN FOR FULL HEIGHT CURB.

P.V.I.  
Elev. = 103.80  
No V.C.

P.V.I.  
Elev. = 104.30  
No V.C.

P.V.I.  
Elev. = 103.10  
No V.C.

		<b>BLUE LAKE ADDITION - PHASE I</b> <b>BLUE LAKE</b> <b>STREET IMPROVEMENTS</b>	
<small>Baughman Company, P.A. 315 Ellis St. Wichita, KS 67211 P 316.263.7711 F 316.263.6149                  ENGINEERING   SURVEYING   PLANNING   LANDSCAPE ARCHITECTURE</small>			
PROJECT NUMBER 472-84074	DESIGN DMV	DRAWN DMV	DATE 2-205
REVISIONS:	SCALE NOTED SHEET		
			8 OF 75