

**Benchmarks:**

City of Wichita Benchmark located 41.60' North and 69.00' East of the Centerlines of Hoover and MacArthur (39th St. South)

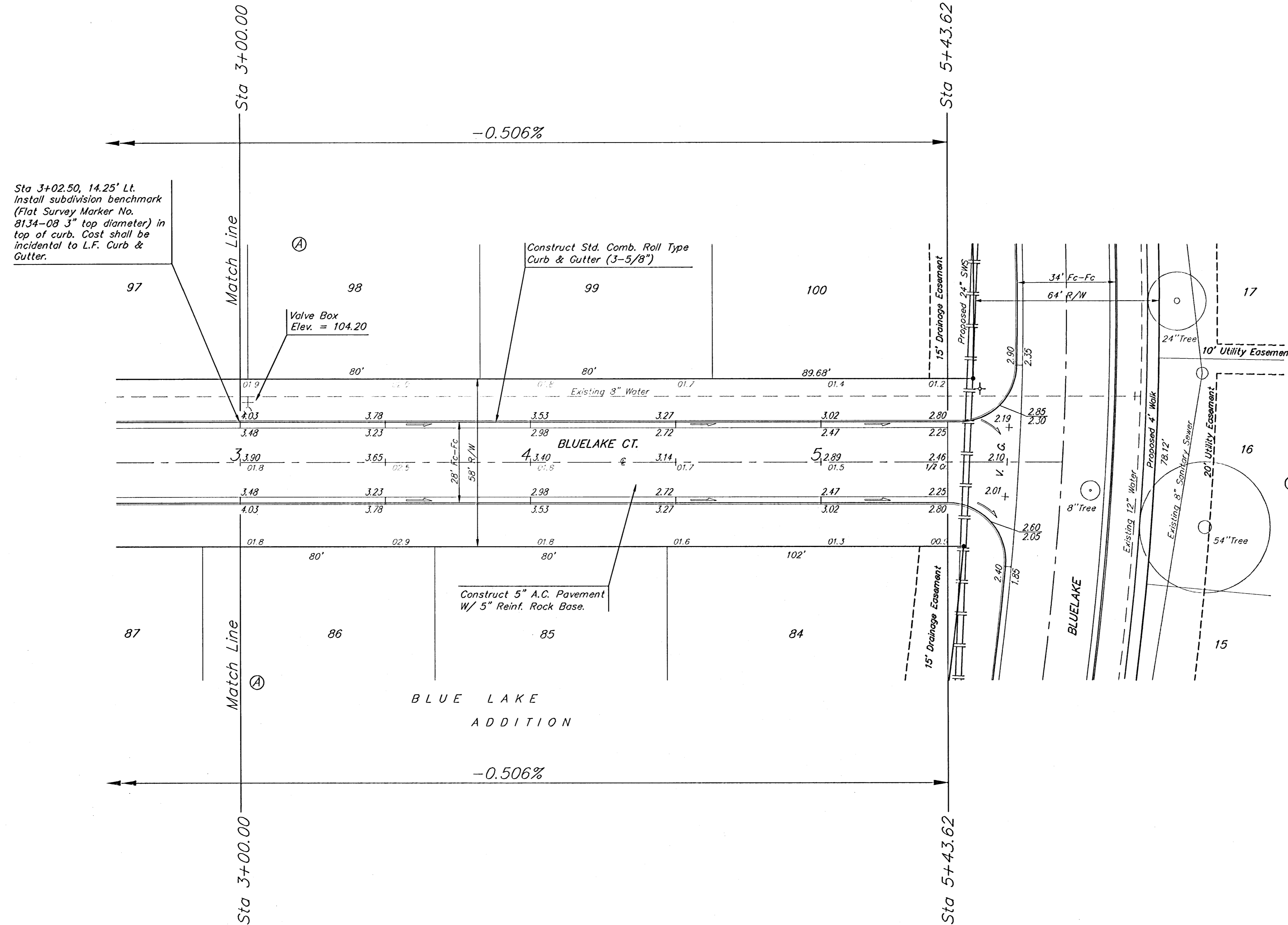
Elevation = 121.22 (City Datum)

City of Wichita Benchmark located at East end of Bridge over the Big Ditch on MacArthur in the West bound lane.

Elevation = 116.52 (City Datum)



Scale: 1" = 20' Horizontal  
• = Iron



Sta 3+02.50, 14.25' Lt. Install subdivision benchmark (Flat Survey Marker No. 8134-08 3" top diameter) in top of curb. Cost shall be incidental to L.F. Curb & Gutter.

Ⓐ

Valve Box  
Elev. = 104.20

Construct Std. Comb. Roll Type Curb & Gutter (3-5/8")

BLUETAKE CT.

Construct 5" A.C. Pavement W/ 5" Reinf. Rock Base.

BLUE LAKE ADDITION

-0.506%

Note: Contractor shall Remove Trees only as Necessary to Construct Sanitary Sewer Line. Cost of Tree Removal shall be Included in Bid Item "Site Clearing and Restoration."

NOTE: ROLL TYPE CURB & GUTTER TO BE CONSTRUCTED ON THE PAVEMENT SHOWN ON THIS SHEET. TOP OF CURB ELEVATIONS ARE GIVEN FOR FULL HEIGHT CURB.

	BLUE LAKE ADDITION - PHASE I	
	<b>BLUETAKE CT.</b>	
STREET IMPROVEMENTS		
<small>Baughman Company, P.A. 315 Ellis St. Wichita, KS 67211 P 3162627711 F 316262149 ENGINEERING   SURVEYING   PLANNING   LANDSCAPE ARCHITECTURE</small>		
PROJECT NUMBER 472-84074	DESIGN DMV	DRAWN DMV
REVISIONS:	APPROVED	DATE 2-205
	SCALE NOTED	SHEET
		<b>11 OF 75</b>

bluelake.vtr