

**Benchmarks:**

City of Wichita Benchmark located 41.60' North and 69.00' East of the Centerlines of Hoover and MacArthur (39th St. South)

Elevation = 121.22 (City Datum)

City of Wichita Benchmark located at East end of Bridge over the Big Ditch on MacArthur in the West bound lane.

Elevation = 116.52 (City Datum)

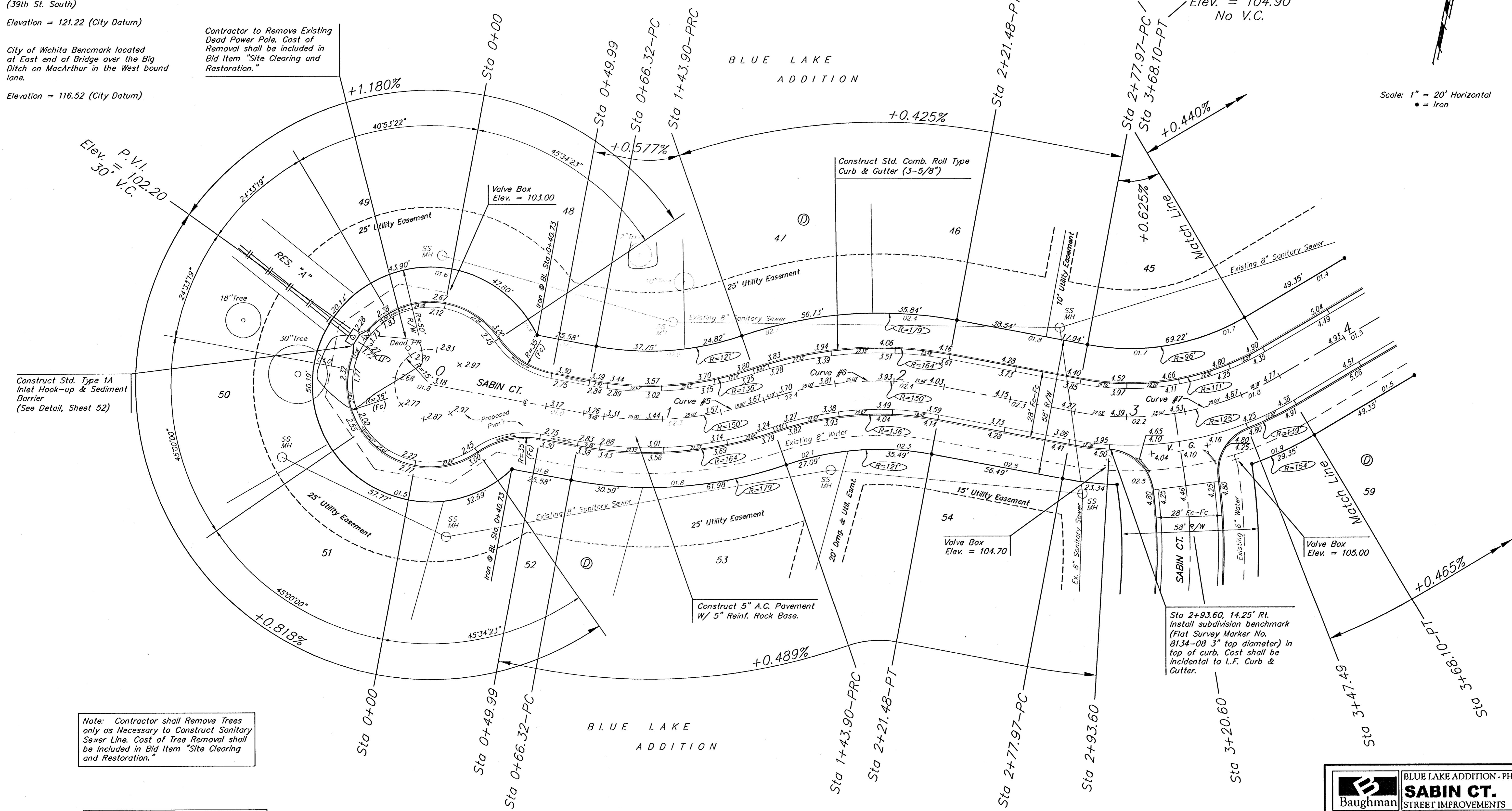
Contractor to Remove Existing Dead Power Pole. Cost of Removal shall be included in Bid Item "Site Clearing and Restoration."

P.V.I.  
Elev. = 103.80  
No V.C.

P.V.I.  
Elev. = 104.40  
No V.C.

P.V.I.  
Elev. = 104.90  
No V.C.

Scale: 1" = 20' Horizontal  
• = Iron



Construct Std. Type 1A Inlet Hook-up & Sediment Barrier (See Detail, Sheet 52)

Note: Contractor shall Remove Trees only as Necessary to Construct Sanitary Sewer Line. Cost of Tree Removal shall be included in Bid Item "Site Clearing and Restoration."

NOTE: ROLL TYPE CURB & GUTTER TO BE CONSTRUCTED ON THE PAVEMENT SHOWN ON THIS SHEET. TOP OF CURB ELEVATIONS ARE GIVEN FOR FULL HEIGHT CURB.

Sta 2+93.60, 14.25' Rt. Install subdivision benchmark (Flat Survey Marker No. 8134-08 3" top diameter) in top of curb. Cost shall be incidental to L.F. Curb & Gutter.

**Baughman** BLUE LAKE ADDITION - PHASE 1  
**SABIN CT.**  
 STREET IMPROVEMENTS

Baughman Company, P.A. 315 1/2th St. Wichita, KS 67211 P 3162627711 F 3162620149  
 ENGINEERING | SURVEYING | PLANNING | LANDSCAPE ARCHITECTURE

PROJECT NUMBER 42284014	DESIGN DMV	DRAWN DMV
REVISIONS	APPROVED	DATE 2-2005
	SCALE NOTED	SHEET <b>14 OF 75</b>

bluekeyer