

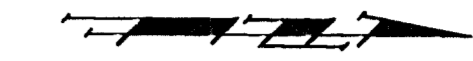
Benchmarks:

City of Wichita Benchmark located 41.60' North and 69.00' East of the Centerlines of Hoover and MacArthur (39th St. South)

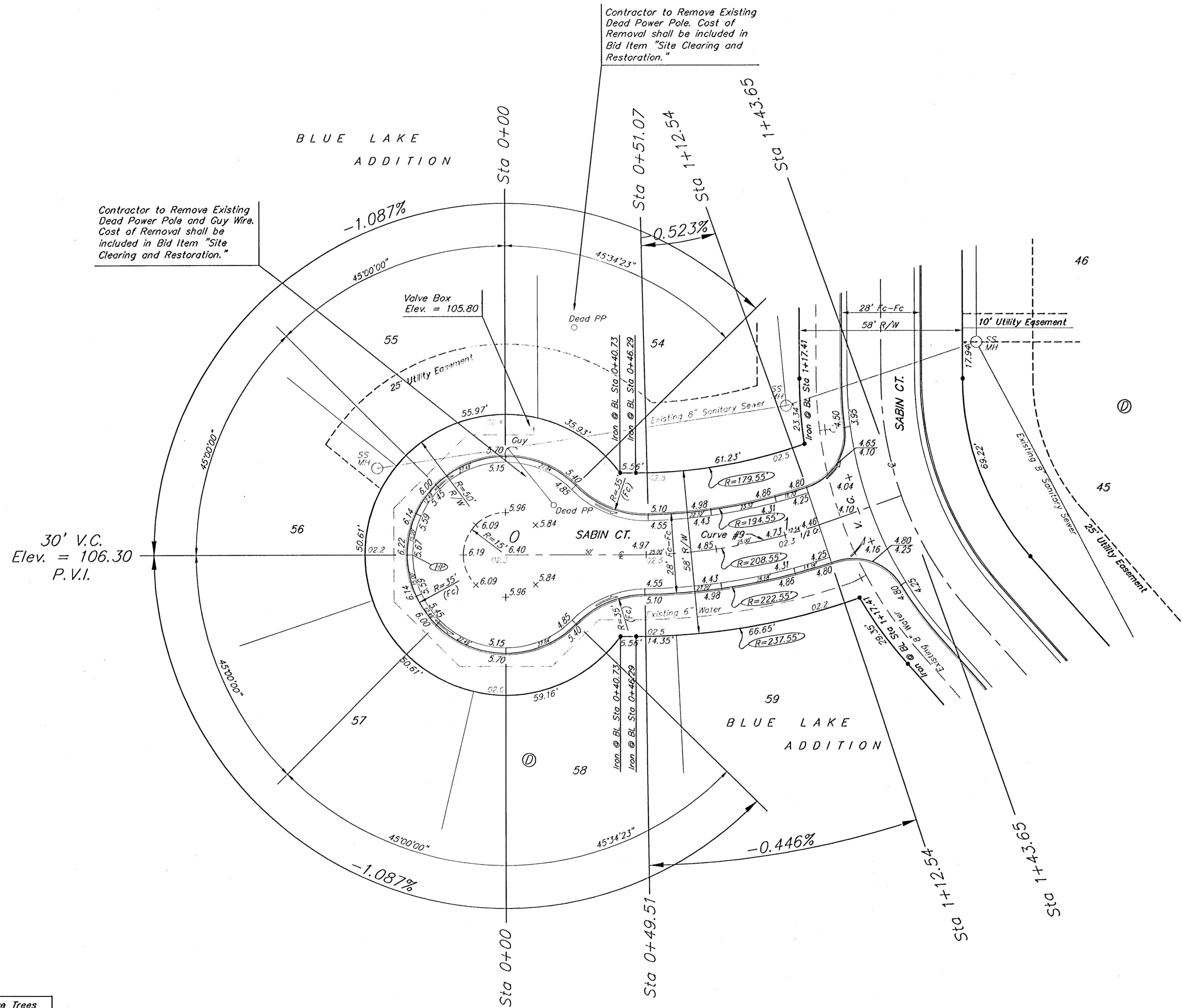
Elevation = 121.22 (City Datum)

City of Wichita Benchmark located at East end of Bridge over the Big Ditch on MacArthur in the West bound lane.

Elevation = 116.52 (City Datum)



Scale: 1" = 20' Horizontal
● = Iron



Contractor to Remove Existing Dead Power Pole and Guy Wire. Cost of Removal shall be included in Bid Item "Site Clearing and Restoration."

Contractor to Remove Existing Dead Power Pole. Cost of Removal shall be included in Bid Item "Site Clearing and Restoration."

30' V.C.
Elev. = 106.30
P.V.I.

Note: Contractor shall Remove Trees only as Necessary to Construct Sanitary Sewer Line. Cost of Tree Removal shall be included in Bid Item "Site Clearing and Restoration."

NOTE: ROLL TYPE CURB & GUTTER TO BE CONSTRUCTED ON THE PAVEMENT SHOWN ON THIS SHEET. TOP OF CURB ELEVATIONS ARE GIVEN FOR FULL HEIGHT CURB.

	BLUE LAKE ADDITION - PHASE I	
	SABIN CT.	
STREET IMPROVEMENTS		
<small>Baughman Company, P.A., 315 1/2th St. Wichita, KS 67211 F 316-266-7111 F 316-266-4149 ENGINEERING SURVEYING PLANNING LANDSCAPE ARCHITECTURE</small>		
PROJECT NUMBER 472-84074	DESIGN DMV	DRAWN DMV
REVISIONS:	APPROVED	DATE 2-2-05
	SCALE NOTED	SHEET
		16 OF 75
<small>bluelake@vr</small>		