

**Benchmarks:**

City of Wichita Benchmark located  
41.60' North and 69.00' East of the  
Centerlines of Hoover and MacArthur  
(39th St. South)

Elevation = 121.22 (City Datum)

City of Wichita Benchmark located  
at East end of Bridge over the Big  
Ditch on MacArthur in the West bound  
lane.

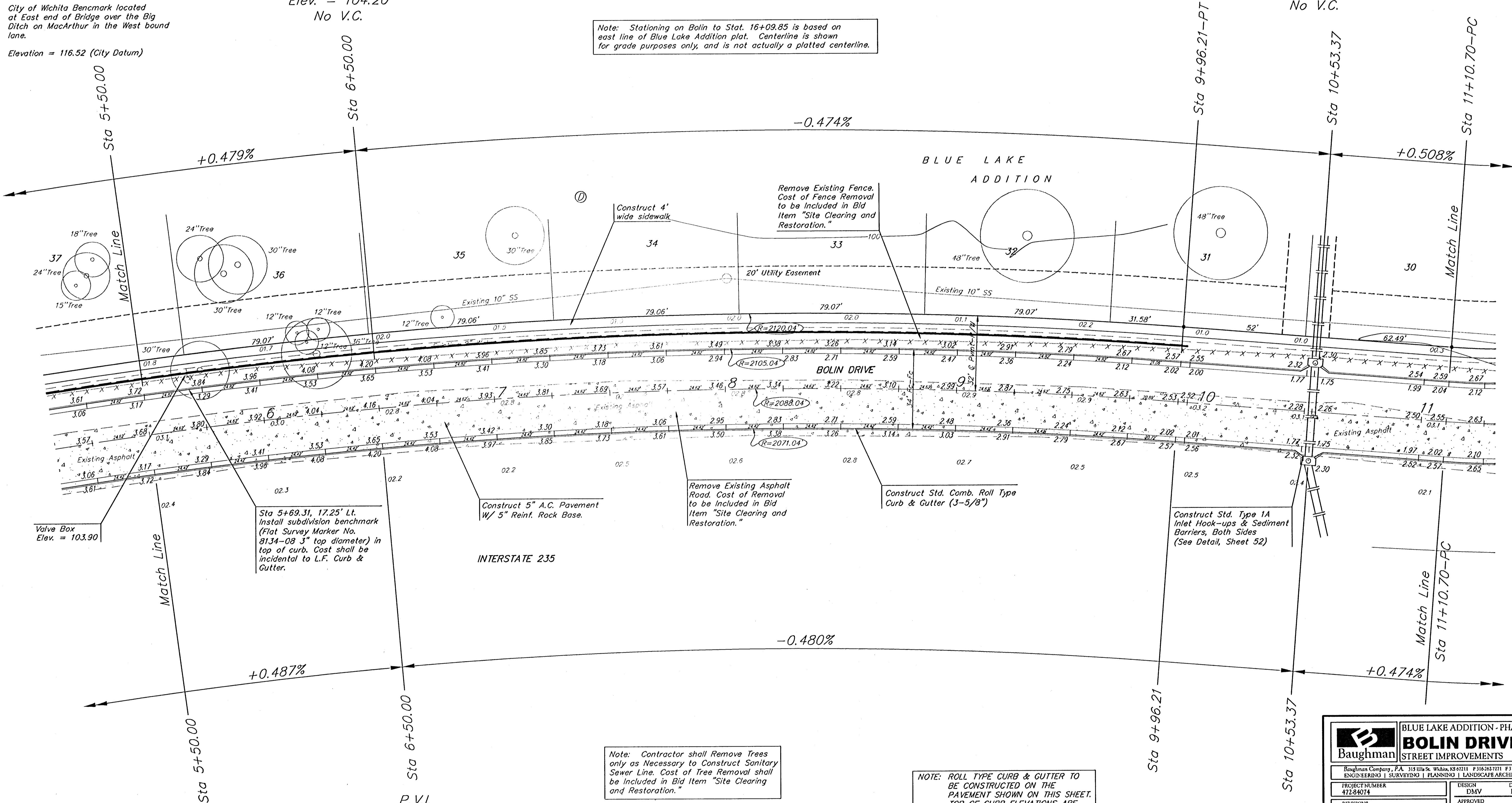
Elevation = 116.52 (City Datum)

P.V.I.  
Elev. = 104.20  
No V.C.

P.V.I.  
Elev. = 102.30  
No V.C.

Scale: 1" = 20' Horizontal  
• = Iron

Note: Stationing on Bolin to Stat. 16+09.85 is based on  
east line of Blue Lake Addition plat. Centerline is shown  
for grade purposes only, and is not actually a platted centerline.



Remove Existing Asphalt  
Road. Cost of Removal  
to be Included in Bid  
Item "Site Clearing and  
Restoration."

NOTE: ROLL TYPE CURB & GUTTER TO  
BE CONSTRUCTED ON THE  
PAVEMENT SHOWN ON THIS SHEET.  
TOP OF CURB ELEVATIONS ARE  
GIVEN FOR FULL HEIGHT CURB.

Note: Contractor shall Remove Trees  
only as Necessary to Construct Sanitary  
Sewer Line. Cost of Tree Removal shall  
be Included in Bid Item "Site Clearing  
and Restoration."

<b>Baughman</b>		BLUE LAKE ADDITION - PHASE I	
<b>BOLIN DRIVE</b>		STREET IMPROVEMENTS	
Baughman Company, P.A. 315 S.W. 5th St., Wichita, KS 67211 F 316-263-7271 F 316-263-2149			
ENGINEERING   SURVEYING   PLANNING   LANDSCAPE ARCHITECTURE			
PROJECT NUMBER 472-84074	DESIGN DMV	DRAWN DMV	
REVISIONS:	APPROVED	DATE 2-205	
	SCALE NOTED	SHEET	
			<b>19 OF 75</b>
bluelake.com			

P.V.I.  
Elev. = 104.20  
No V.C.

P.V.I.  
Elev. = 102.30  
No V.C.