

Benchmarks:

City of Wichita Benchmark located 41.60' North and 69.00' East of the Centerlines of Hoover and MacArthur (39th St. South)

Elevation = 121.22 (City Datum)

City of Wichita Benchmark located at East end of Bridge over the Big Ditch on MacArthur in the West bound lane.

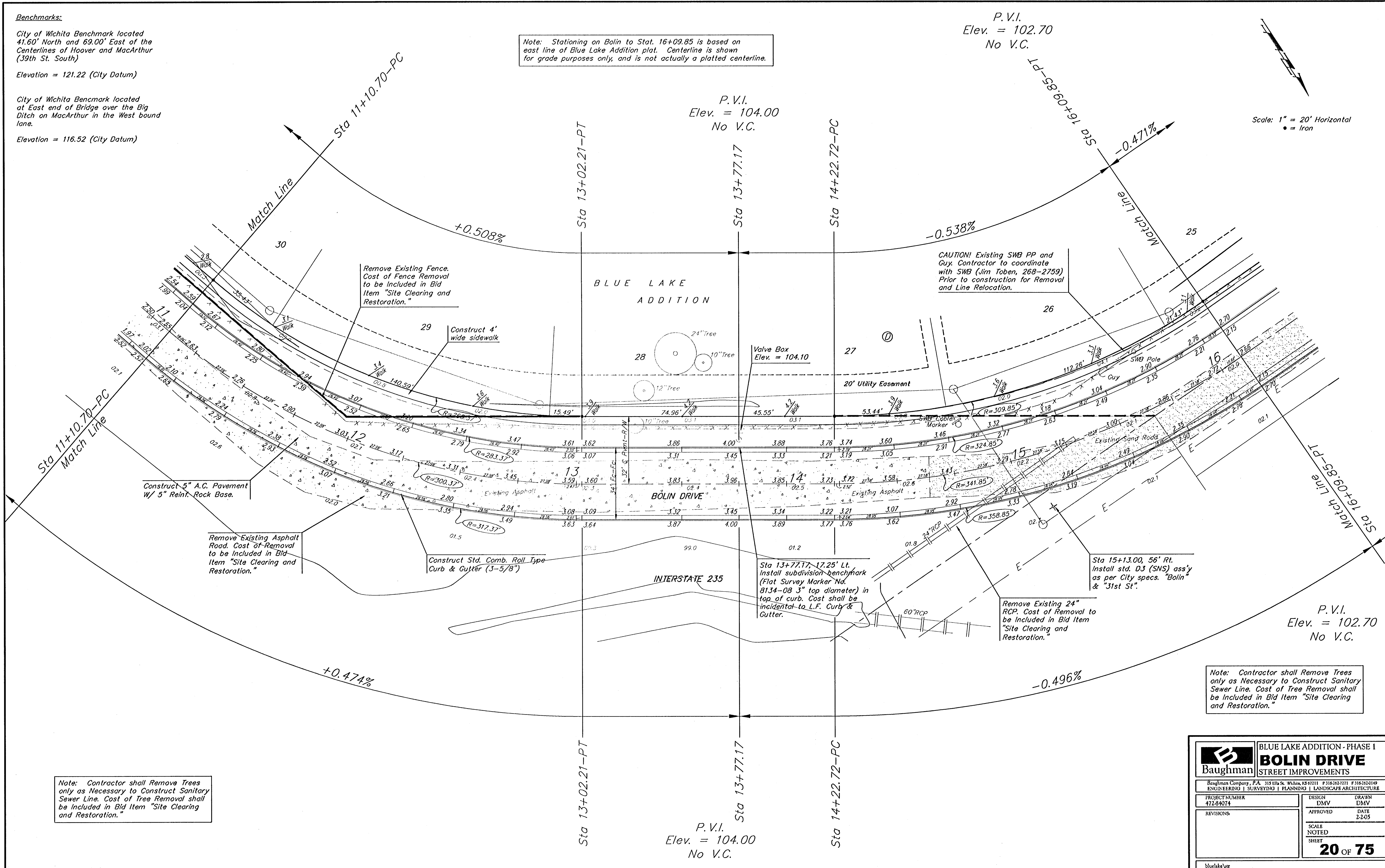
Elevation = 116.52 (City Datum)

Note: Stationing on Bolin to Stat. 16+09.85 is based on east line of Blue Lake Addition plat. Centerline is shown for grade purposes only, and is not actually a platted centerline.

P.V.I.
Elev. = 102.70
No V.C.

P.V.I.
Elev. = 104.00
No V.C.

Scale: 1" = 20' Horizontal
• = Iron



Note: Contractor shall Remove Trees only as Necessary to Construct Sanitary Sewer Line. Cost of Tree Removal shall be Included in Bid Item "Site Clearing and Restoration."

P.V.I.
Elev. = 104.00
No V.C.

P.V.I.
Elev. = 102.70
No V.C.

Note: Contractor shall Remove Trees only as Necessary to Construct Sanitary Sewer Line. Cost of Tree Removal shall be Included in Bid Item "Site Clearing and Restoration."

Baughman		BLUE LAKE ADDITION - PHASE I	
		BOLIN DRIVE	
		STREET IMPROVEMENTS	
Baughman Company, P.A. 115 0th St. #1000, KS 67111 P 316-263-1011 F 316-263-0149			
ENGINEERING SURVEYING PLANNING LANDSCAPE ARCHITECTURE			
PROJECT NUMBER 472-84074	DESIGN DMV	DRAWN DMV	
REVISIONS:	APPROVED	DATE 2-2-05	
	SCALE NOTED	SHEET	
			20 OF 75
bluelake.net			