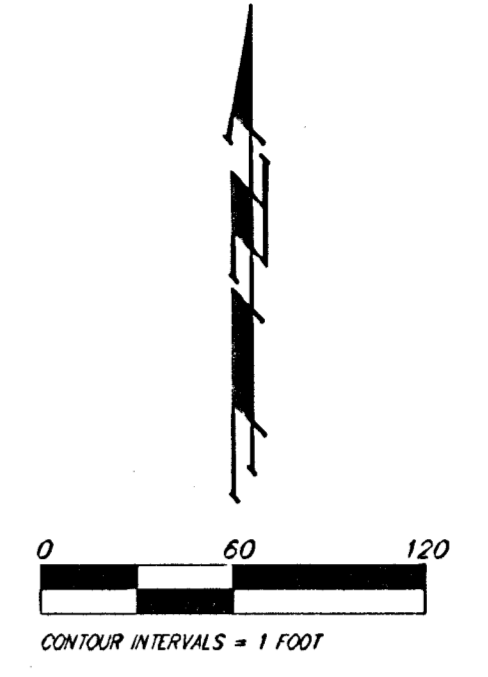
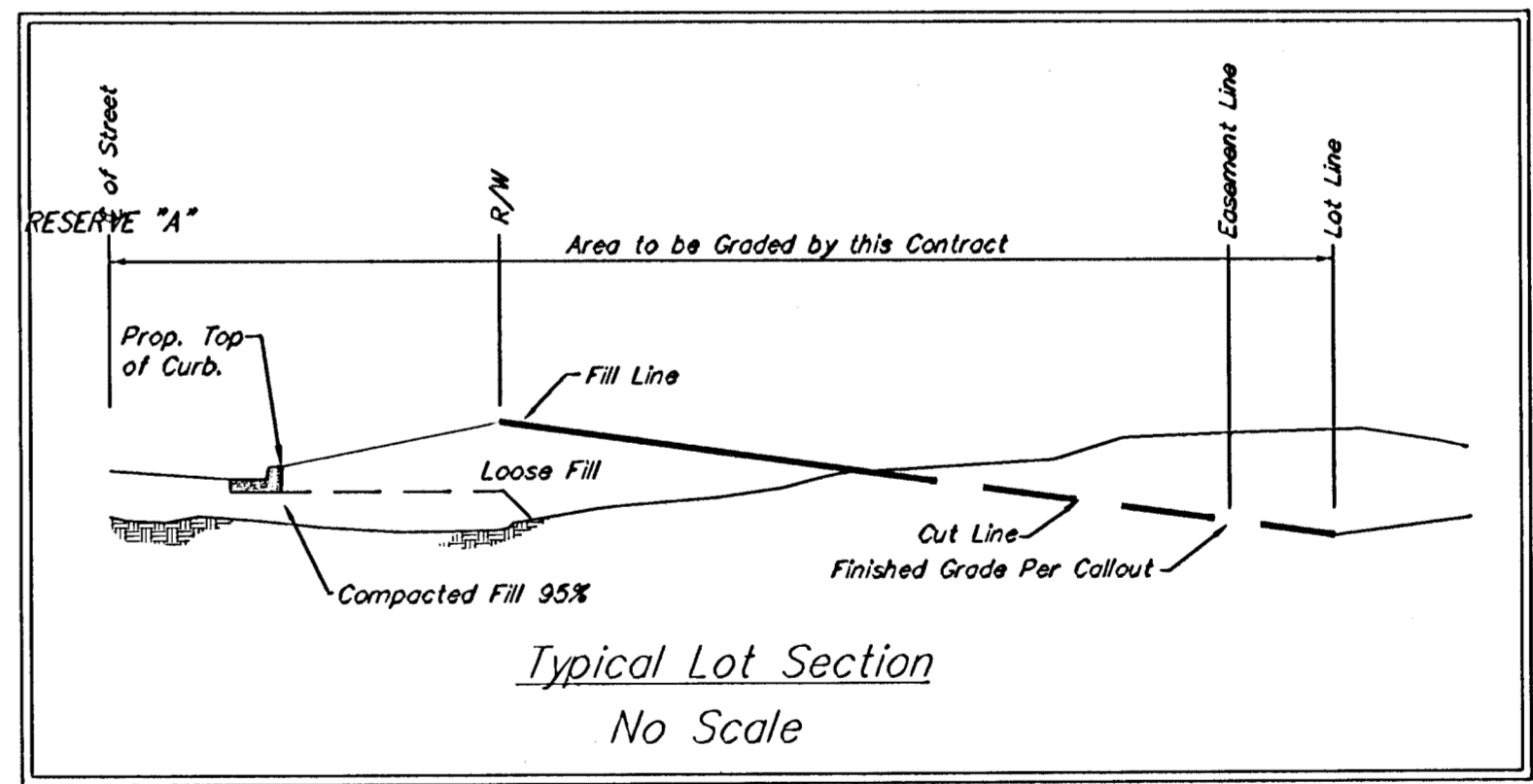


Lake Data:  
 Area of WS = 38 acres  
 Total DA = 146 acres  
 100-yr Rainfall Volume = 36 ac-ft  
 Increase in WS due to 100-yr rainfall = 2.5 ft  
 100-yr WS Elev. = 92.5

E=92.53  
 2" PLASTIC PIPE  
 E=92.51



- Area to be graded
- - - 144 - - - Existing Grade
- 144 — Proposed Grade



**Benchmarks:**  
 Hoover and MacArthur ( 39th St. South )  
 COW Bench Mark. NE corner of intersection.  
 41.60 ft North of center line.  
 69.00 ft East of center line.  
 20.00 ft East of guy pole.  
 79.80 ft NE of Section corner iron.

City 121.22 ft  
 MSL 1308.62 ft

Big Ditch and MacArthur  
 COW Bench Mark. West bound lane,  
 east end of bridge.  
 East of Hoover.

City 116.52 ft  
 MSL 1303.92 ft

BLUE LAKE ADDITION  
**MASS GRADING**  
 WICHITA, KANSAS

**BAUGHMAN COMPANY P.A.**  
 ENGINEERING, SURVEYING, & PLANNING  
 318-202-7271 • 319 ELLIS • WICHITA, KANSAS 67211

DESIGN ELG	DRAWN ELG	APPROVED	DATE 5-03-04
PROJECT NUMBER			SCALE noted
SHEET			<b>42</b>
OF			<b>75</b>

pre\_grade.dwg