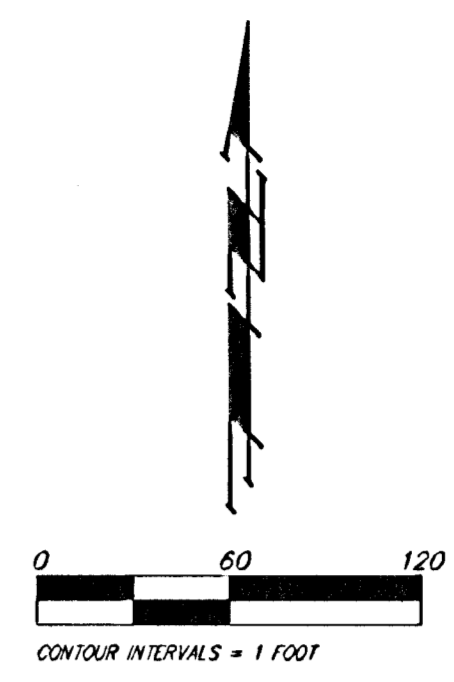
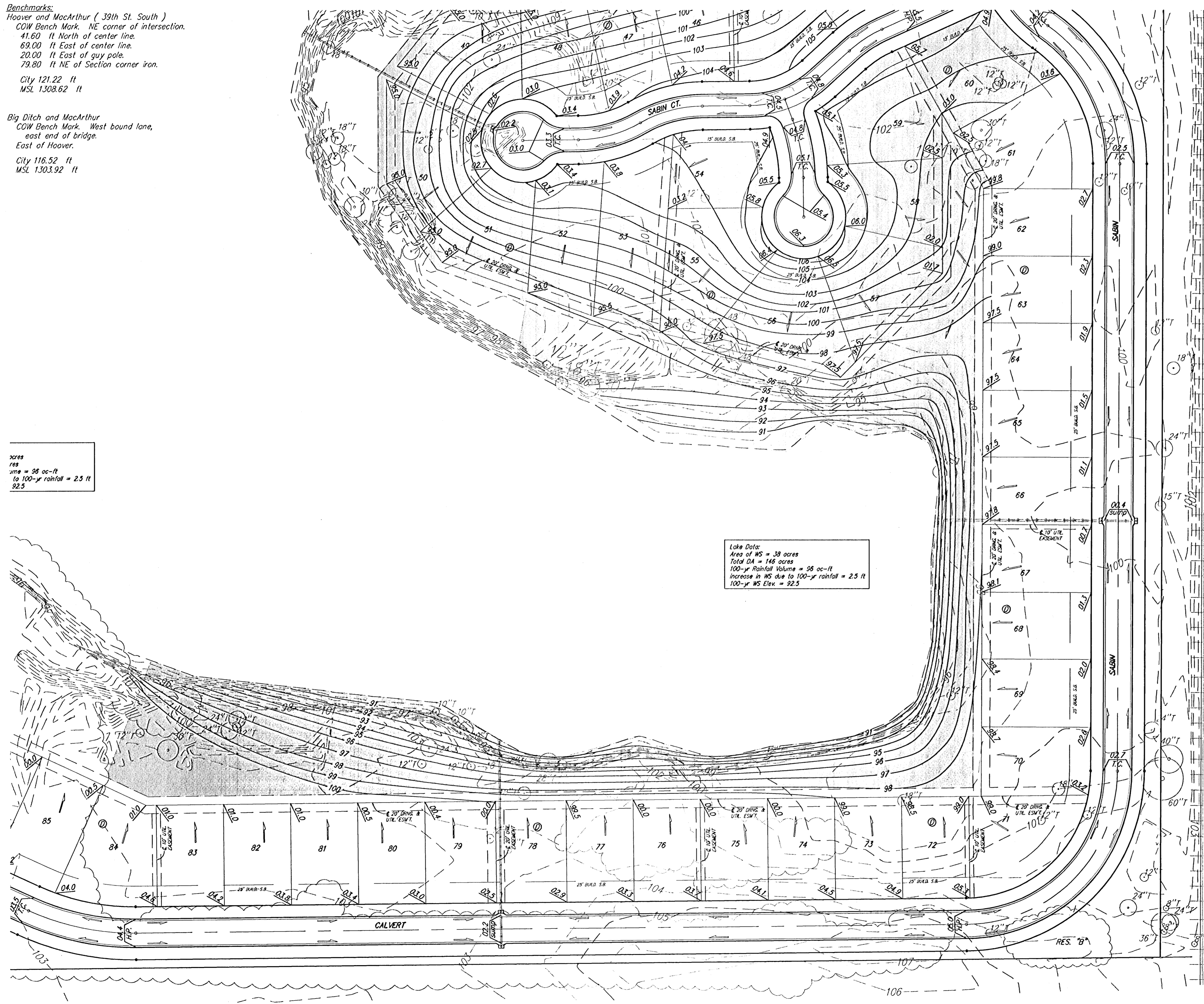


Benchmarks:
 Hoover and MacArthur (39th St. South)
 COW Bench Mark. NE corner of intersection.
 41.60 ft North of center line.
 69.00 ft East of center line.
 20.00 ft East of guy pole.
 79.80 ft NE of Section corner iron.
 City 121.22 ft
 MSL 1308.62 ft

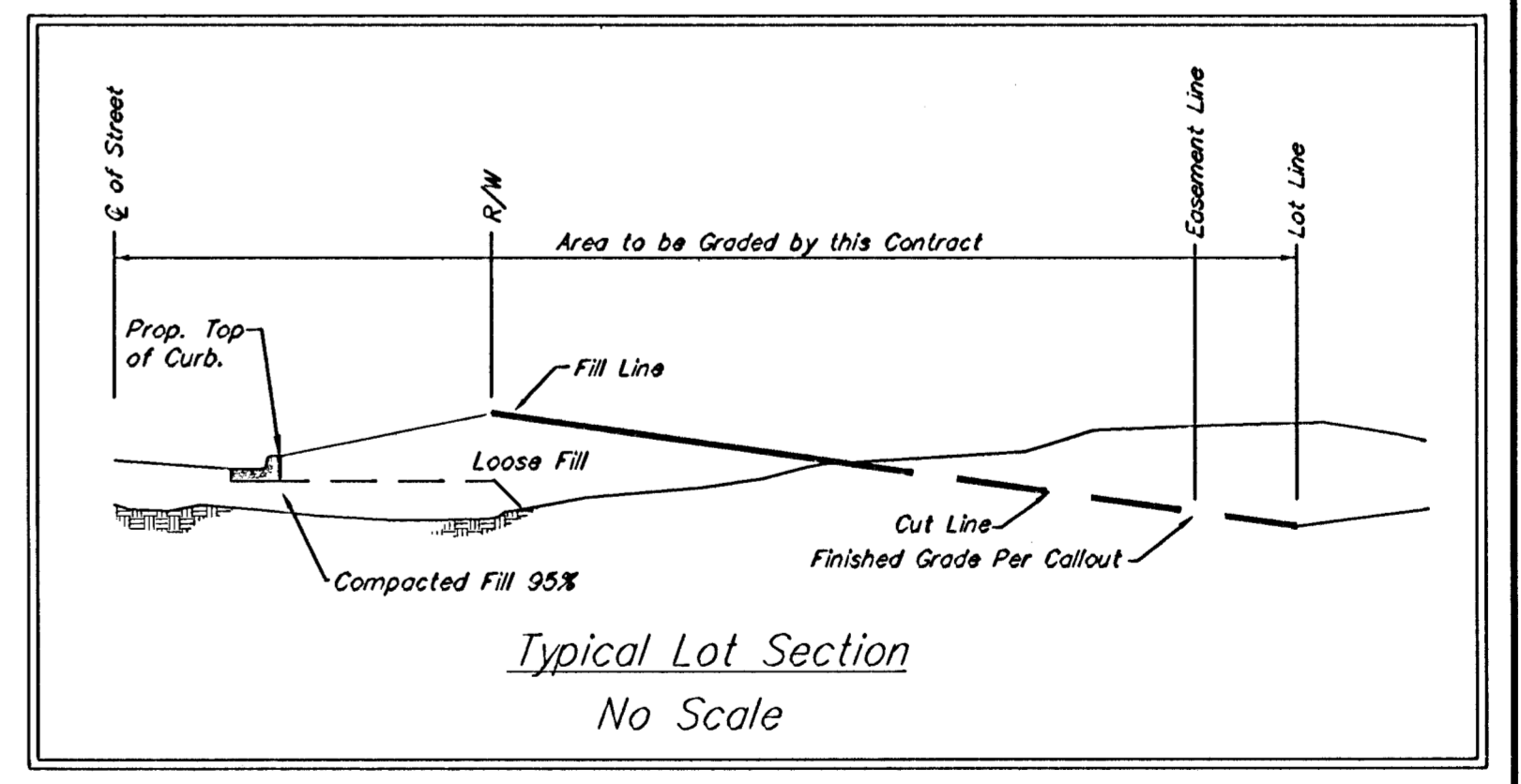
Big Ditch and MacArthur
 COW Bench Mark. West bound lone,
 east end of bridge.
 East of Hoover.
 City 116.52 ft
 MSL 1303.92 ft

acres
 res = 58 ac-ft
 to 100-yr rainfall = 2.5 ft
 92.5

Lake Data:
 Area of WS = 39 acres
 Total DA = 146 acres
 100-yr Rainfall Volume = 58 ac-ft
 increase in WS due to 100-yr rainfall = 2.5 ft
 100-yr WS Elev. = 92.5



Area to be graded
 --- 144 --- Existing Grade
 --- 144 --- Proposed Grade



BLUE LAKE ADDITION
MASS GRADING
 WICHITA, KANSAS

BAUGHMAN COMPANY P.A.
 ENGINEERING, SURVEYING, & PLANNING
 315-262-7271 • 315 ELLIS • WICHITA, KANSAS 67211

DESIGN BLG	DRAWN BLG	APPROVED	DATE 5-03-04	SCALE noted	SHEET 44 OF 75
---------------	--------------	----------	-----------------	----------------	---------------------------------------

pre_grading.dwg