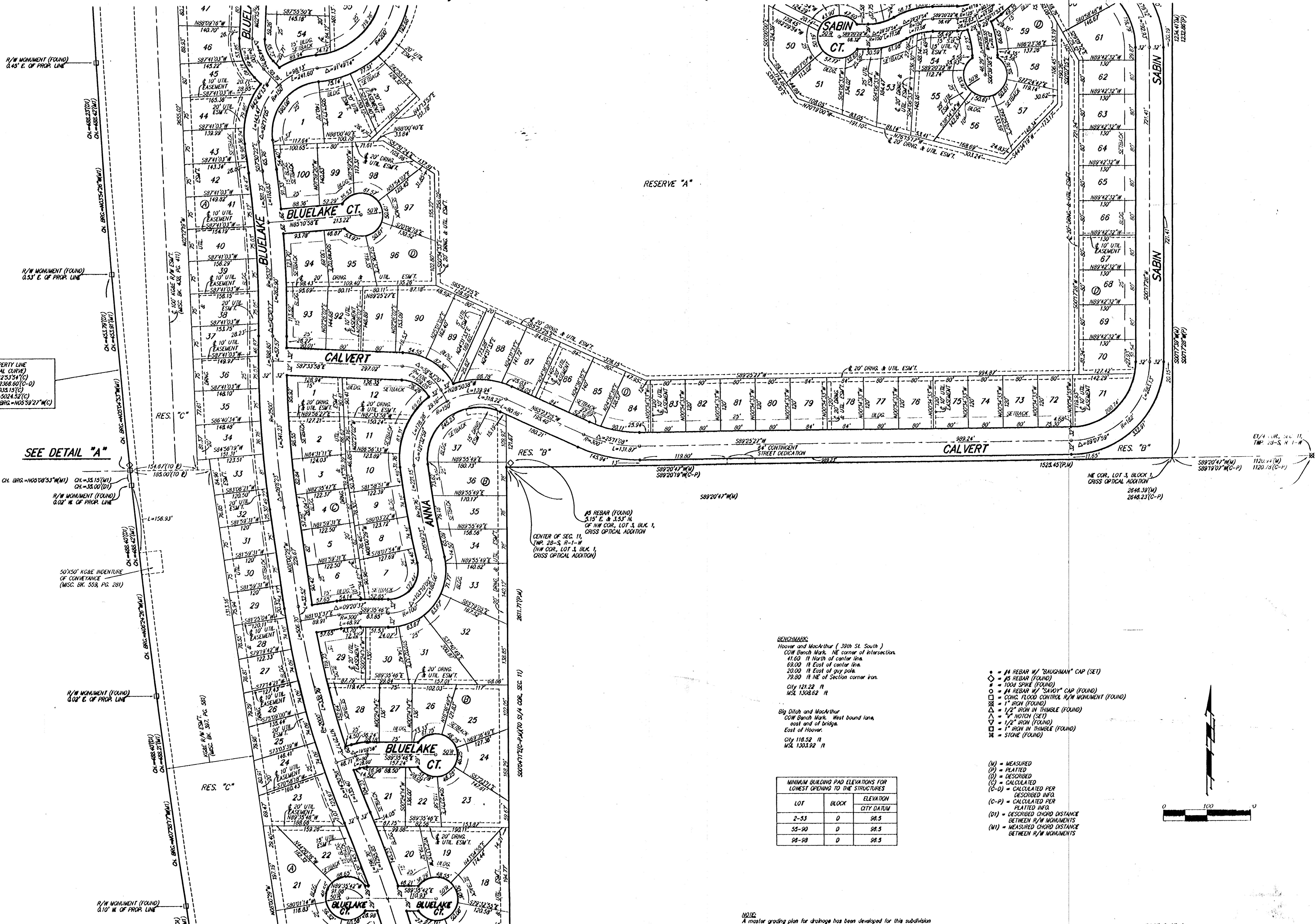


BLUE LAKE ADDITION WICHITA, SEDGWICK COUNTY, KANSAS

CVB 53-A



PROPERTY LINE
(TOTAL CURVE)
Δ=12.5354(C)
R=22368.80(C-D)
L=5033.15(C)
CH=5024.52(C)
CH BRG.=N0539.27(W)

SEE DETAIL "A"

#5 REBAR (FOUND)
0.30' E. OF PROP. LINE
CH BRG.=N0705.47(W)
CH=1.40(W)
R/W MARK (FOUND) TO
#5 REBAR (FOUND)
R/W MONUMENT (FOUND)
0.34' E. OF PROP. LINE &
0.97' N. OF N. LINE SW 1/4
PROPERTY LINE
R=22368.80(C-D)
CH BRG.=N0509.53(W)
CH=33.15(W)
CH=35.00(C)

DETAIL "A"
(NO SCALE)

#5 REBAR (FOUND)
3.15' E. & 3.63' N.
OF NW COR. LOT 3, BLK. 1,
CROSS OPTICAL ADDITION
CENTER OF SEC. 11,
TWP. 28-S, R-1-W
(NW COR. LOT 3, BLK. 1,
CROSS OPTICAL ADDITION)

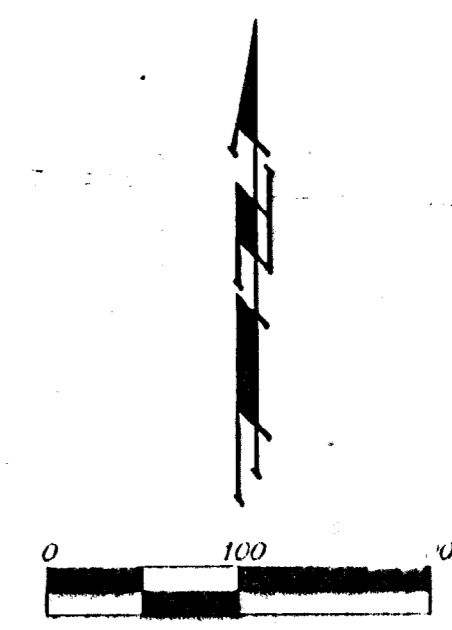
BENCHMARKS:
Hoover and MacArthur (39th St. South)
CO#M Bench Mark, NE corner of intersection
41.00' N. of center line
93.00' E. of center line
20.00' E. of center line
79.00' N. of Section corner iron.
City 121.22' ft
MSL 1308.62' ft

Big Ditch and MacArthur
CO#M Bench Mark, West bound lane,
east end of bridge.
City 118.52' ft
MSL 1303.92' ft

LOT	BLOCK	ELEVATION	
		TO	CITY DATUM
2-53	D	98.5	
55-90	D	98.5	
96-98	D	98.5	

- ◆ = #4 REBAR W/ "BAUGHMAN" CAP (SET)
- ◇ = #5 REBAR (FOUND)
- = TOOM SPIKE (FOUND)
- = #4 REBAR W/ "SHOBY" CAP (FOUND)
- = CONC. FLOOD CONTROL R/W MONUMENT (FOUND)
- = 1" IRON (FOUND)
- △ = 1/2" IRON IN THIMBLE (FOUND)
- △ = 1" NOTCH (SET)
- △ = 1/2" IRON (FOUND)
- △ = 1" IRON IN THIMBLE (FOUND)
- ✱ = STONE (FOUND)

- (M) = MEASURED
- (P) = PLATTED
- (D) = DESCRIBED
- (C) = CALCULATED
- (C-D) = CALCULATED PER DESCRIBED INFO.
- (C-P) = CALCULATED PER PLATTED INFO.
- (D1) = DESCRIBED CHORD DISTANCE BETWEEN R/W MONUMENTS
- (M1) = MEASURED CHORD DISTANCE BETWEEN R/W MONUMENTS



NOTE:
A master grading plan for drainage has been developed for this subdivision.