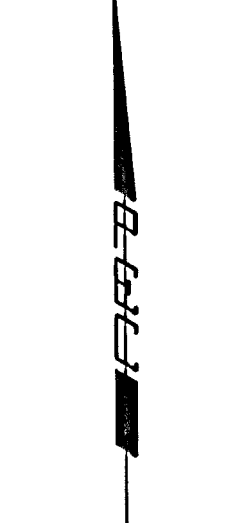


# FONTANA

AN ADDITION TO WICHITA,  
SEDGWICK COUNTY, KANSAS

## SITE GRADING PLAN



SCALE: 1"=100'

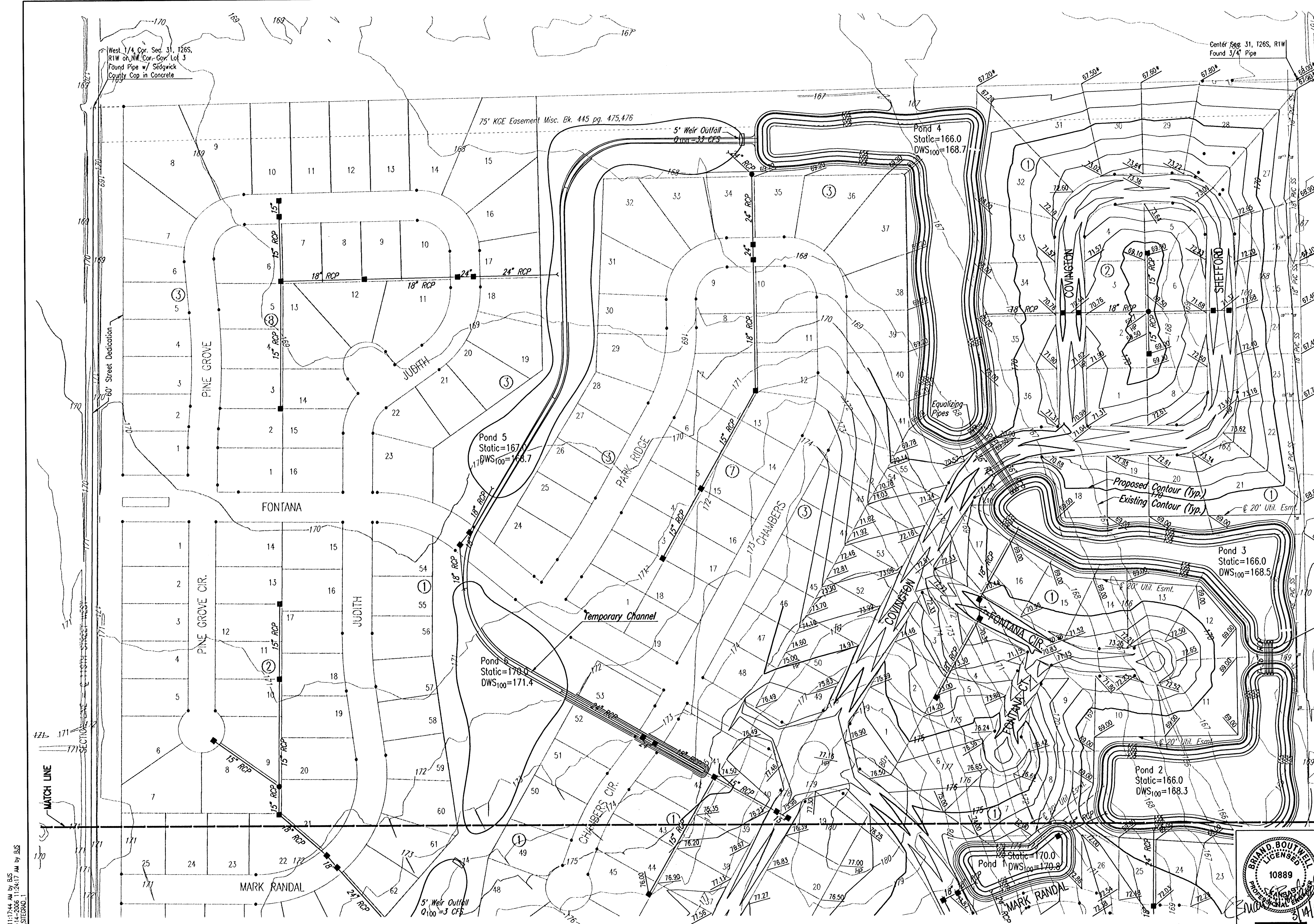
### SITE GRADING NOTES

GRADING AS SHOWN ON THIS SHEET IS TO BE COMPLETED WITH CITY OF WICHITA PROJECT NO. 468-83883 (SWD NO. 236). PAVING CONTRACTOR SHALL BE RESPONSIBLE FOR FINAL SHAPING OF ROADBEDS AS NECESSARY.

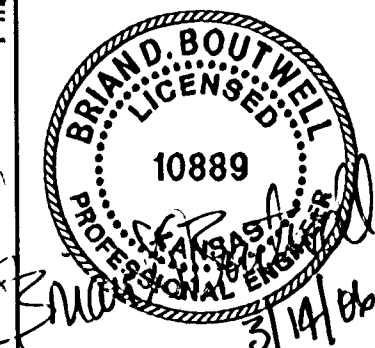
SEE TYPICAL SECTION SHEET AND CROSS SECTIONS.

### LEGEND

- SPOT ELEVATION
- HIGH POINT ELEVATION
- MATCH EXISTING ELEVATION
- PROPOSED CONTOUR
- EXISTING CONTOUR
- CONTOUR INTERVAL: 1 FOOT



Sheet 03-13-2006 11:17:44 AM by BJS  
 C:\2006\4485\000\SITE\0303\_13.dwg



No.	Revision	By	Date
	Fontana Addition-Phase 1		
<b>SITE GRADING PLAN</b>			
(FOR INFORMATION ONLY)			
JAMES L. ARMOUR, P.E. - CITY ENGINEER			
CITY OF WICHITA PROJECT NO. 472-84086			
<b>Professional Engineering Consultants, P.A.</b>			
303 S. TOPEKA • WICHITA, KANSAS 67202			
316-262-2691 • FAX 316-262-3003			
Designed by	BDB, BLB	Job No.	35-04485-000
Drawn by	BJS	Date	September 2004
			Sheet 8 of 101