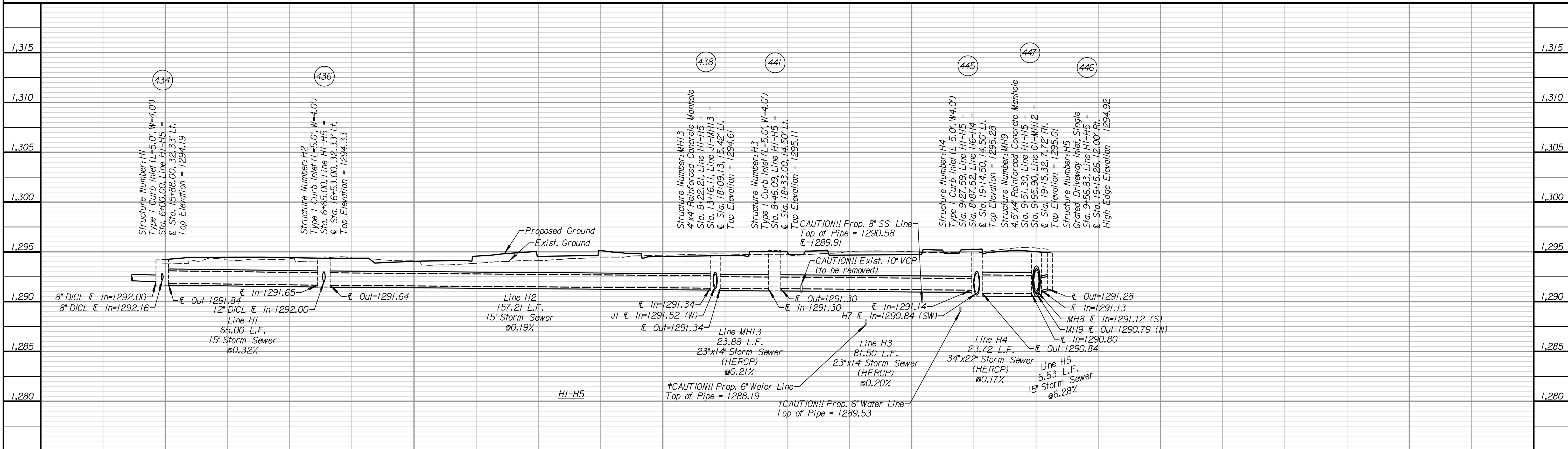


Sta. 19+18.45, 3.23' Lt. to Sta. 20+89.69, 3.20' Lt. Abandon 171.2 L.F. 24"x22" Brick Arch in place, plug both ends & fill with 28.5 C.Y. Flowable Fill

Note:
The Contractor shall field adjust Roof drain leaders clear of exposed utilities when possible.



CONSULTANTS:

COMMERCE STREET & ST. FRANCIS AVENUE IMPROVEMENTS FROM WATERMAN TO KELLOGG

REVISIONS:	MARK	DATE	DESCRIPTION

PROJ NO: 472-2021
SCALE: 1"=20'
DATE: 2/21/2024
DESIGNED BY: DJK
DRAWN BY: DJK
CHECKED BY: MDB

SHEET TITLE:
ST. FRANCIS AVENUE STORM SEWER IMPROVEMENTS SYSTEM H

d:\krazner\2021\2024 - 11\4451 AM - cttransystems\aw_bocalltransystems\pww\aw_bocalltransystems\1254722C-SDF-M01-102.dgn

IF THIS DRAWING IS LESS THAN 22" X 36" IT IS A REDUCED SIZE DRAWING