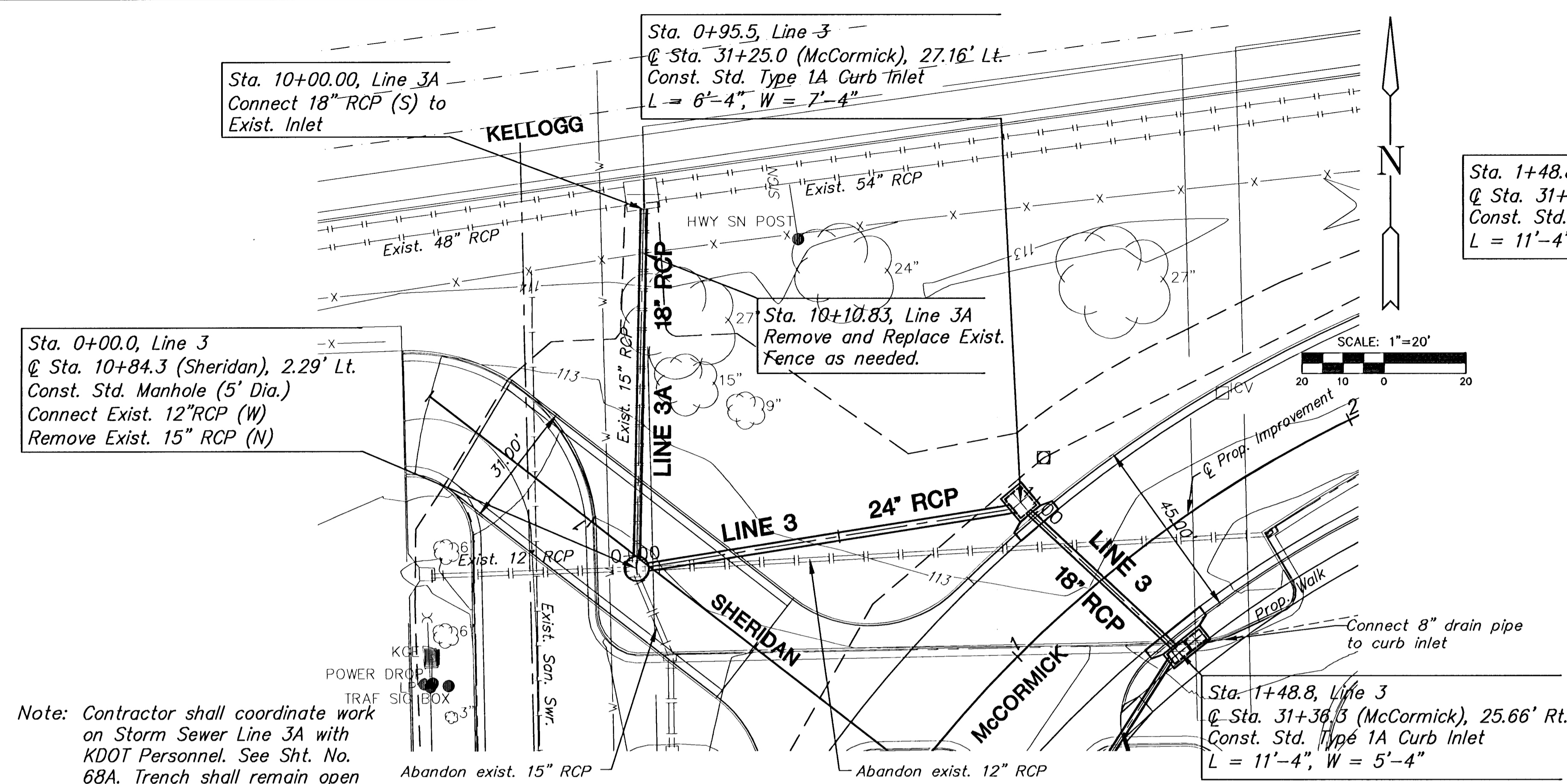


**MCCORMICK STREET IMPROVEMENT
STORM WATER SEWER PLANS
LINE 3**



Sta. 0+00.0, Line 3
@ Sta. 10+84.3 (Sheridan), 2.29' Lt.
Const. Std. Manhole (5' Dia.)
Connect Exist. 12" RCP (W)
Remove Exist. 15" RCP (N)

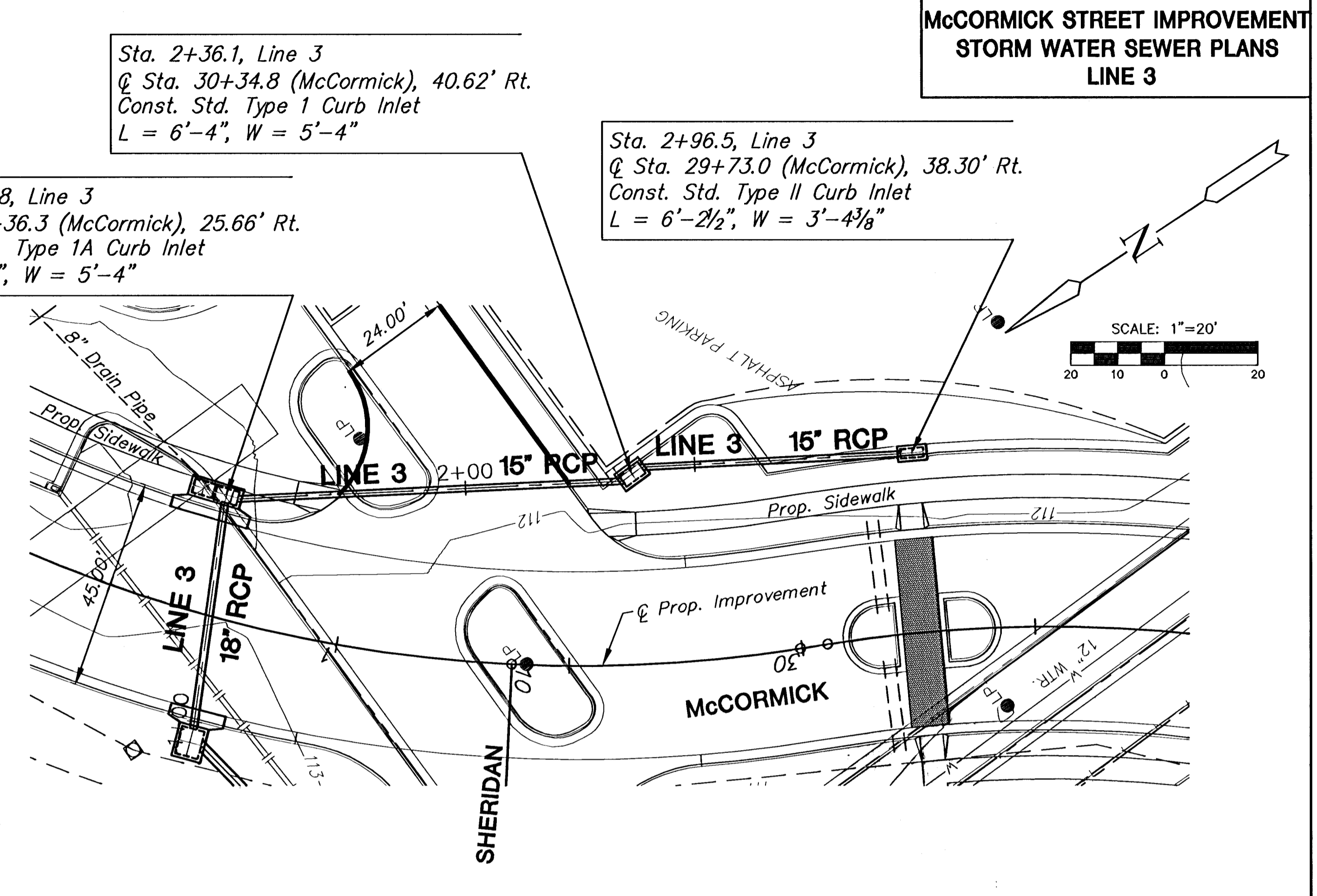
Sta. 0+95.5, Line 3
@ Sta. 31+25.0 (McCormick), 27.16' Lt.
Const. Std. Type 1A Curb Inlet
L = 6'-4", W = 7'-4"

Sta. 10+10.83, Line 3A
Remove and Replace Exist.
Fence as needed.

Sta. 1+48.8, Line 3
@ Sta. 31+36.3 (McCormick), 25.66' Rt.
Const. Std. Type 1A Curb Inlet
L = 11'-4", W = 5'-4"

Note: Contractor shall coordinate work on Storm Sewer Line 3A with KDOT Personnel. See Sht. No. 68A. Trench shall remain open only when work is occurring or as directed by KDOT.

PLAN LINE 3

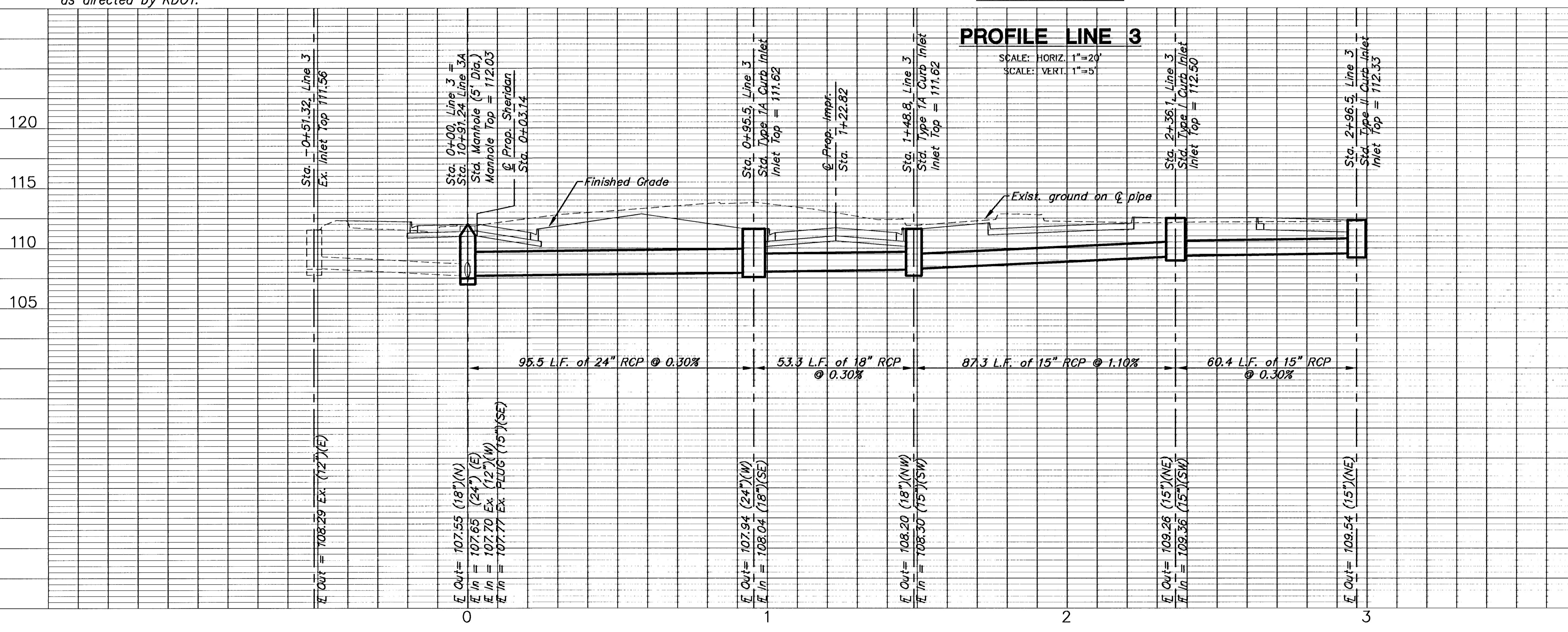


Sta. 2+36.1, Line 3
@ Sta. 30+34.8 (McCormick), 40.62' Rt.
Const. Std. Type 1 Curb Inlet
L = 6'-4", W = 5'-4"

Sta. 2+96.5, Line 3
@ Sta. 29+73.0 (McCormick), 38.30' Rt.
Const. Std. Type II Curb Inlet
L = 6'-2 1/2", W = 3'-4 3/8"

SCALE: 1"=20'
20 10 0 20

PROFILE LINE 3



PROFILE LINE 3A

