

**PIPE CONNECTION DETAIL**

NOTE: A hole shall be made through existing structures as shown to accommodate pipe connections. Round holes are acceptable. Clean gravel and filter fabric around pipe will not be required around concrete storm sewer pipe.

Contractor to remove section from existing (or proposed structure) and patch around pipe.

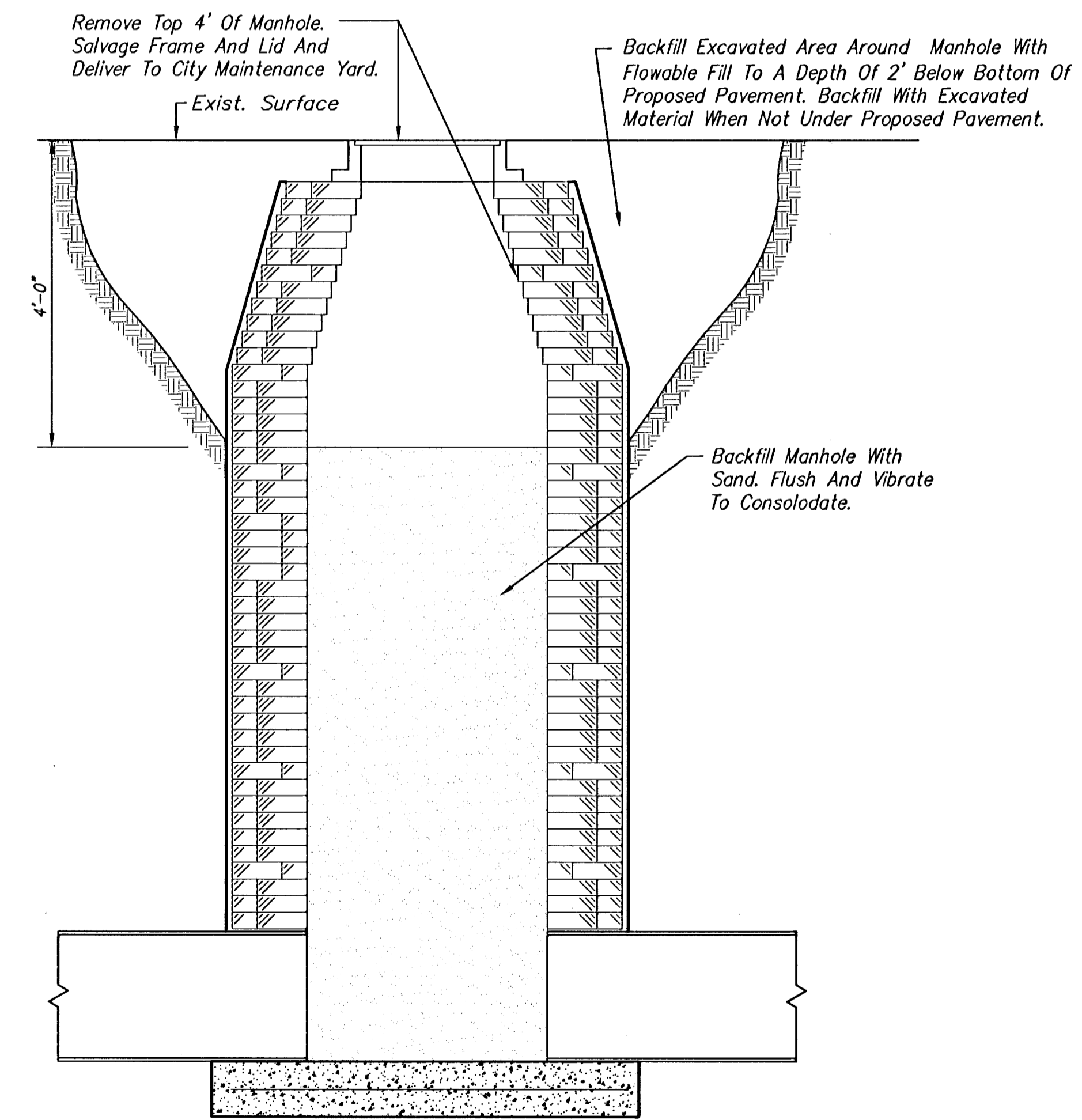
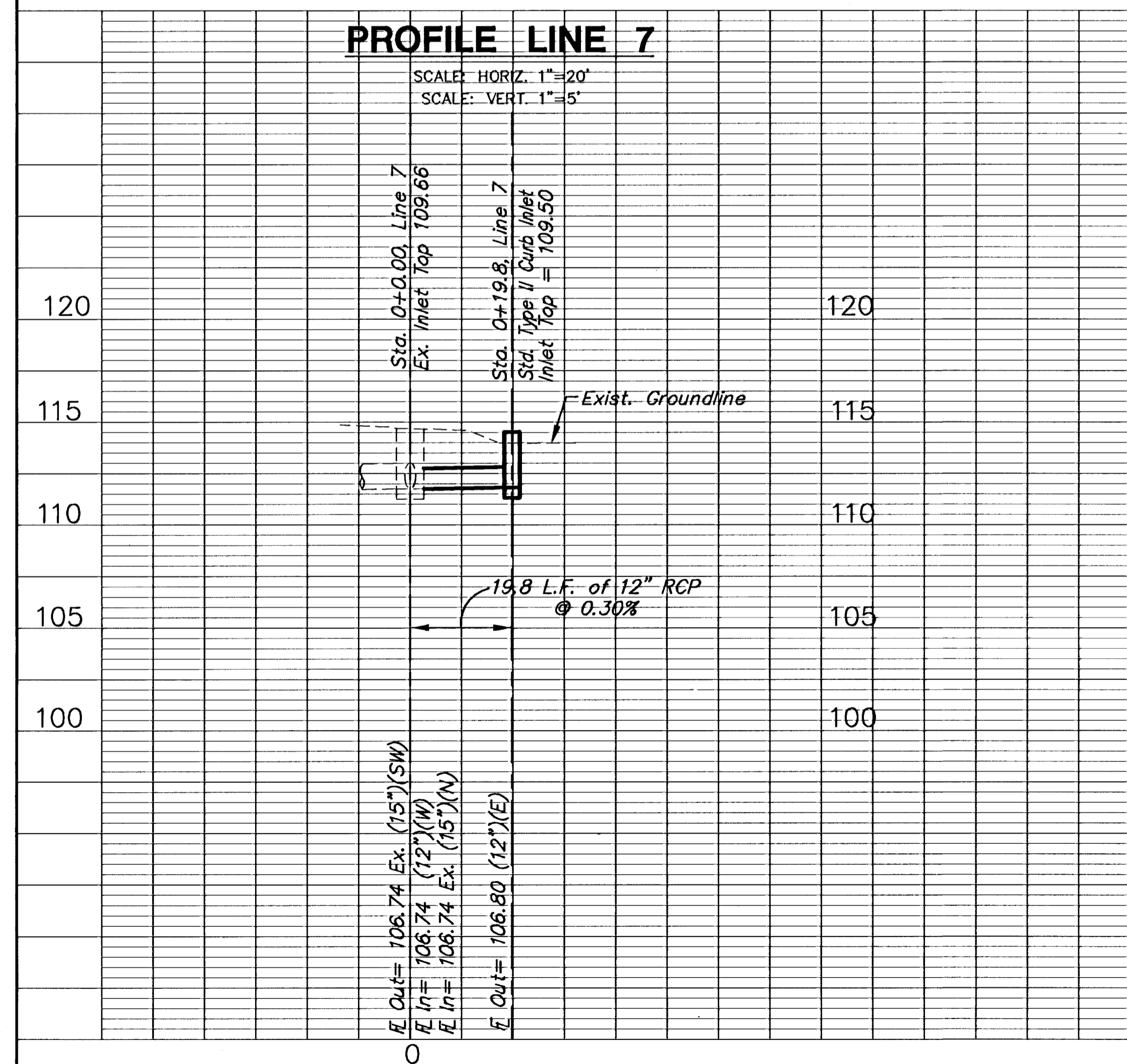
**MANHOLE ADJUSTMENT TABLE**

Station	Existing	Proposed
28+99	111.88	111.17
9+37 (Sheridan)	111.27	112.10
50+61	111.58	112.9±
54+62	111.12	112.9±
9+77 (Sheridan)	111.64	111.68
51+88.86	111.61	114.2±

Elevations are approximate. Contractor to verify prior to construction.

**PLAN LINE 7**

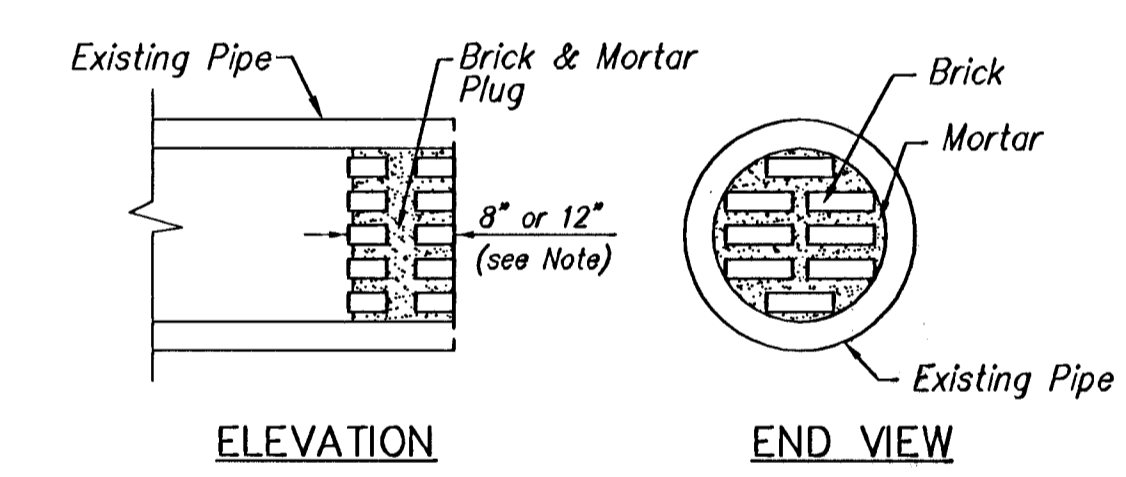
**PROFILE LINE 7**



**MANHOLE ABANDON DETAIL**

Note: Contractor May Completely Remove Manhole At No Additional Cost To Owner.

Contractor Shall Plug Open Ends Of Pipe To Be Abandoned When Cut Or Broken During Construction Activities.



**PIPE PLUGGING DETAIL**

Note: Pipe Plugs Shall Be Constructed Of Brick Masonry, With Construction Requirements And Materials Conforming To The Same Requirements As Specified For A Masonry Construction In The Std. Specs. Pipes Having Diameters Of 18" Or Smaller Shall Be Plugged With 8" Thick Plug. Pipes Having Diameters Larger Than 18" Shall Be Plugged With 12" Thick Plug. The Construction Of Pipe Plugs Shall Not Be Paid For Directly, But Shall Be Considered Subsidiary To Pipe Installation.

The Contractor May Use Other Methods To Plug Existing Pipe If Approved By The Project Engineer.

All Exposed Ends Of Pipes To Be Abandoned Shall Be Plugged.

J:\Civil\03245\dwg\SW\03245005.dwg 1/21/2005 1:40:47 PM CST

**MKEC**  
ENGINEERING CONSULTANTS  
411 N. WEST ROAD  
WICHITA, KS. 67206  
316 - 684 - 9600

**MCCORMICK AVENUE STREET IMPROVEMENTS**  
PROJECT NAME

**STORM SEWER PLAN AND DETAILS**  
SHEET TITLE

JRA DESIGN BY. JSB DRAWN BY. JRA CHECKED BY.

AUGUST 2005 DATE. 03245 JOB NO. 16 / 111 SHEET/OT