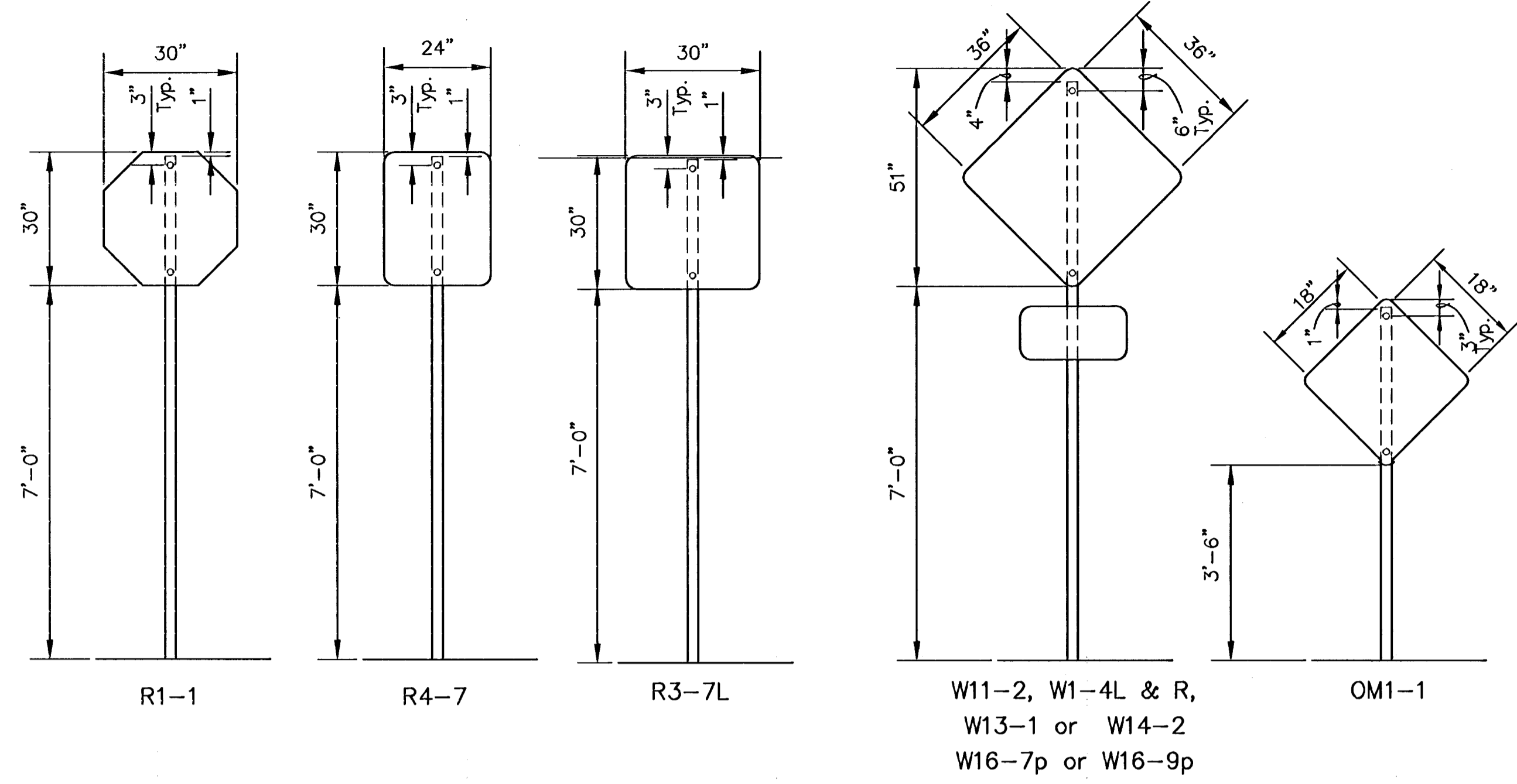
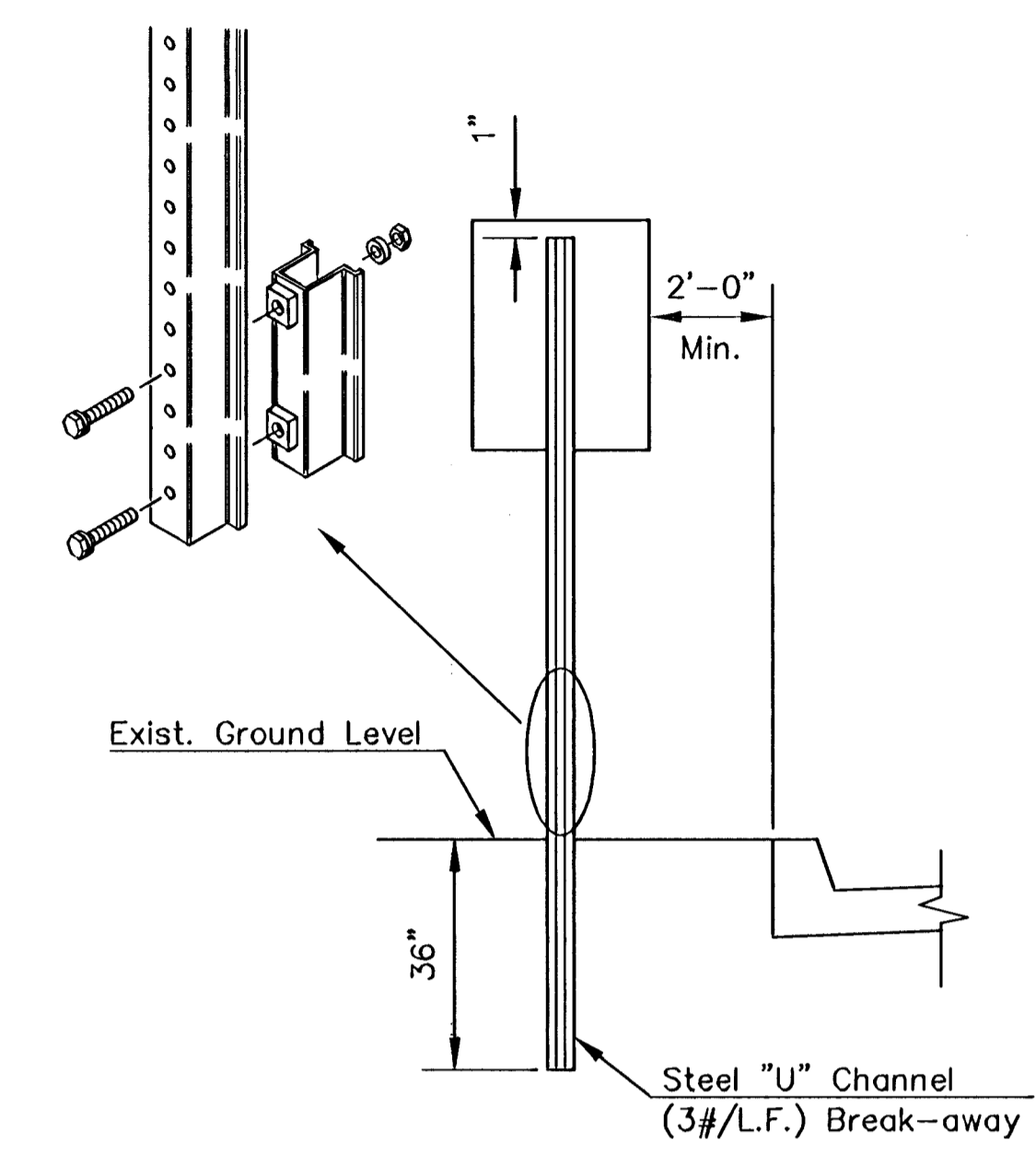


TRAFFIC CONTROL SIGNS & SIGN POST

| Station | Location from C | Classification - Each | | | | | | | | | | | | | | Sign Post Length | |
|------------|-----------------|-----------------------|------|-------|-------|------|------|-------|-------|-------|-------|-------|-------|--------|--------|-------------------------|-------------|
| | | R1-1 | R2-1 | R3-7L | R3-9R | W4-2 | W1-1 | OM1-1 | W1-3L | W1-3R | W13-1 | W11-2 | W14-2 | W16-7p | W16-9p | Breakaway 1-3/4"x1-3/4" | "U"-Channel |
| McCormick | | | | | | | | | | | | | | | | | |
| 21+87.82 | C | | | | | | 1 | 1 | | | | | | | | | 10.5' |
| 25+53.11 | C | | | | | | 1 | | | | | | | | | | 6.5' |
| 25+53.11 | Rt. | | | | | | | | 1 | | 1 | | | | | | 12.0' |
| 27+94.22 | C | | | | | | 1 | | | | | | | | | | 6.5' |
| 28+75.51 | Rt. | | | | | | 1 | | | | | 1 | | | 1 | | 12.0' |
| 29+61.03 | C | | | | | | 1 | | | | | | | | | | 6.5' |
| 29+69.56 | Rt. | | | | | | 1 | | | | | | 1 | | | | 12.0' |
| 29+80.63 | Lt. | | | | | | 1 | | | | | | | 1 | | | 12.0' |
| 29+87.37 | C | | | | | | 1 | | | | | | | | | | 6.5' |
| 31+08.60 | Lt. | | | | | | 1 | | | | | 1 | | | 1 | | 12.0' |
| 32+22.12 | C | | | | | | 1 | | | | | | | | | | 6.5' |
| 34+29.98 | Lt. | | | | | | 1 | | | | 1 | | | | | | 12.0' |
| 34+58.41 | C | | | | | | 1 | | | | | | | | | | 6.5' |
| 35+27.09 | C | | | | | | 1 | | | | | | | | | | 6.5' |
| 35+82.15 | Rt. | | | | | | 1 | | | | | | | | | | 6.5' |
| 36+50.00 | Rt. | | | | | | 1 | | | | 1 | 1 | | | | | 12.0' |
| 37+60.87 | C | | | | | | 1 | | | | | | | | | | 6.5' |
| 41+83.41 | Rt. | | | | | | 1 | | | | | | | | | 1 | 12.0' |
| 43+14.04 | C | | | | | | 1 | | | | | | | | | | 6.5' |
| 43+21.08 | Rt. | | | | | | 1 | | | | | 1 | | | | | 12.0' |
| 43+33.93 | Lt. | | | | | | 1 | | | | | | 1 | | | | 12.0' |
| 44+08.33 | C | | | | | | 1 | | | | | | | | | | 6.5' |
| 44+72.53 | Lt. | | | | | | 1 | | | | | | | 1 | | | 12.0' |
| 45+73.53 | C | | | | | | 1 | | | | | | | | | | 6.5' |
| 46+27.53 | Lt. | | | | | | | | | | | | | | | | 10.5' |
| 46+93.80 | Lt. | | | | | | | | | | 1 | 1 | | | | | 12.0' |
| 47+82.84 | Lt. | | | | | | | | | | | | | | | | 10.5' |
| Sheridan | | | | | | | | | | | | | | | | | |
| 9+06.79 | Lt. | | | | | | | | | | | | | | | | 12.0' |
| 9+53.55 | Rt. | | | | | | | | | | | | | | | | 10.5' |
| 10+40.15 | Lt. | | | | | | | | | | | | | | | | 10.5' |
| Dondlinger | | | | | | | | | | | | | | | | | |
| 9+54.04 | Rt. | | | | | | | | | | | | | | | | 10.5' |
| Total | | 3 | 2 | | | | 1 | 13 | 2 | 2 | 4 | 8 | 1 | 4 | 4 | | 297.0 |



SIGN MOUNTING DETAILS



TRAFFIC SIGN INSTALLATION DETAIL FOR SIGNS NOT GREATER THAN 12" WIDE

SIGN POST LENGTH SUMMARY

| BREAKAWAY SIGN POST: | |
|----------------------|------|
| 1 3/4"x1 3/4" LENGTH | EACH |
| 6.5' | 12 |
| 10.5' | 6 |
| 12.0' | 13 |
| 2-1/4"x2-1/4"x18" | 31 |
| 2"x2"x36" | 31 |
| U-CHANNEL | |
| LENGTH | EACH |
| STUBS 3' | |
| POSTS 8' | |
| POSTS 9' | |
| POSTS 9-1/2' | |
| POSTS 11' | |

| RECAPITULATION OF MATERIALS | | |
|--|--------|------|
| ITEMS | TOTAL | UNIT |
| Sign Face, (High Intensity HA Reflective Sheeting) | 183.54 | S.F. |
| Steel "U" Channel Sign Post | | L.F. |
| Breakaway Sign Post, 1-3/4" x 1-3/4" | 297.0 | L.F. |
| Breakaway Anchor Sleeve, 2-1/4" x 2-1/4" x 18" | 46.5 | L.F. |
| Breakaway Sign Post Anchor, 2" x 2" x 36" | 93.0 | L.F. |

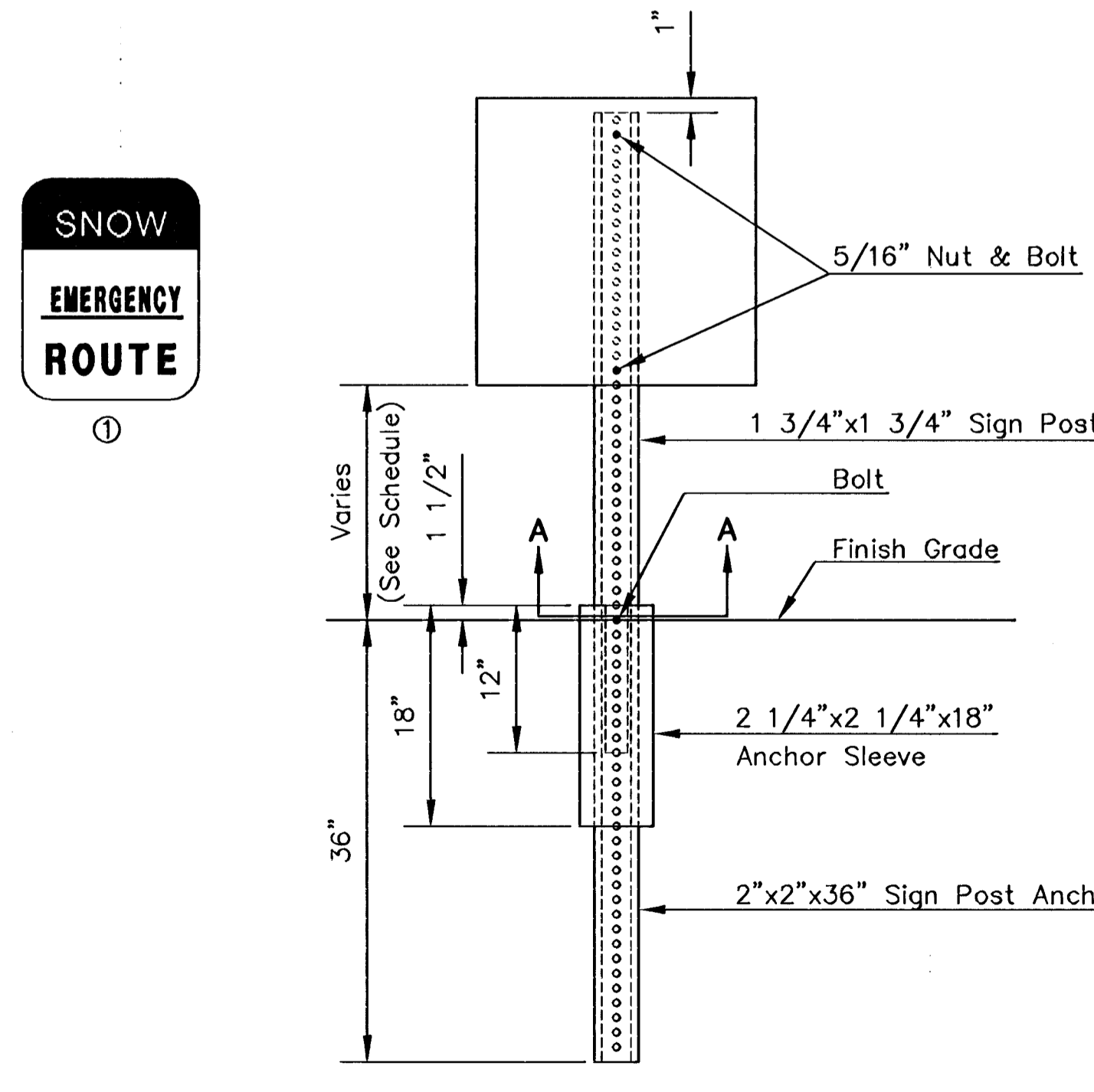
| RECAPITULATION OF MATERIALS | | |
|-----------------------------|----------|------|
| BID ITEMS | TOTAL | UNIT |
| Signing | LUMP SUM | S.F. |

| SIGN DESCRIPTION | | | |
|------------------|-------------------------|---------|--------------|
| CLASSIFICATION | TYPE | SIZE | AREA |
| OM1-1 | OBJECT MARKER TYPE 1 | 18"x18" | 2.25 SQ. FT. |
| R1-1 | STOP SIGN | 30"x30" | 5.18 SQ. FT. |
| R3-7L | LT. LANE MUST TURN LT. | 30"x30" | 6.29 SQ. FT. |
| R4-7 | KEEP RIGHT | 24"x30" | 5.00 SQ. FT. |
| W11-2 | PEDESTRIAN CROSSING | 36"x36" | 6.75 SQ. FT. |
| W1-3L&R | REVERSE CURVE (LT & RT) | 36"x36" | 9.00 SQ. FT. |
| W13-1 | ADISORY SPEED (30 MPH) | 18"x18" | 2.25 SQ. FT. |
| W14-2 | NO OUTLET | 30"x30" | 6.25 SQ. FT. |
| W16-7p | DIAGONAL ARROW | 24"x12" | 2.00 SQ. FT. |
| W16-9p | AHEAD | 24"x12" | 2.00 SQ. FT. |

- PAVEMENT INSTALLATION SEQUENCE
- SIGN POST ANCHOR DRIVEN INTO SUBGRADE PRIOR TO THE PLACEMENT OF THE PAVEMENT.
 - ANCHOR SLEEVE DRIVEN INTO SUBGRADE OVER THE SIGN POST ANCHOR PRIOR TO THE PLACEMENT OF THE PAVEMENT.
 - INSERT SIGN POST INTO THE SIGN POST ANCHOR AND BOLT IN PLACE.
- GROUND INSTALLATION SEQUENCE
- SIGN POST ANCHOR DRIVEN INTO THE GROUND.
 - ANCHOR SLEEVE DRIVEN INTO THE GROUND OVER THE SIGN POST ANCHOR.
 - INSERT SIGN POST INTO THE SIGN POST ANCHOR AND BOLT IN PLACE.

NOTE: IN ALL INSTALLATIONS THE FIRST HOLE ABOVE THE FINISHED GRADE LEVEL IN ALL THREE UNITS MUST BE IN LINE FOR INSERTION OF THE BOLT.

ALL BOLTS AND NUTS FOR FASTENING THE SIGNS AND SIGN POST ASSEMBLY SHALL COMPLY WITH SECTION 1614 AND ALL WASHERS SHALL COMPLY WITH SECTION 1614 OF THE STANDARD SPECIFICATION FOR STATE ROAD AND BRIDGE CONSTRUCTION (1990 EDITION) AND SHALL BE SUBSIDIARY ITEM.



BREAK-AWAY SIGN POST DETAIL SECTION A-A

NOTE: ALL LETTER, NUMBER, & SYMBOL SIZES, SPACING, & COLORS AND THE SIGN COLORS SHALL CONFORM TO THE CURRENT "MANUAL ON UNIFORM TRAFFIC CONTROL DEVICES."

ALL SIGN MATERIAL TO BE 0.080" ALUMINUM.

STREET SIGN DETAILS

JIM ARMOUR, P.E. - CITY ENGINEER

| | |
|----------------|-----------------|
| PROJECT NUMBER | INDEX CODE |
| 472-83831 | 706866 |
| DATE | SHEET 60 OF 111 |