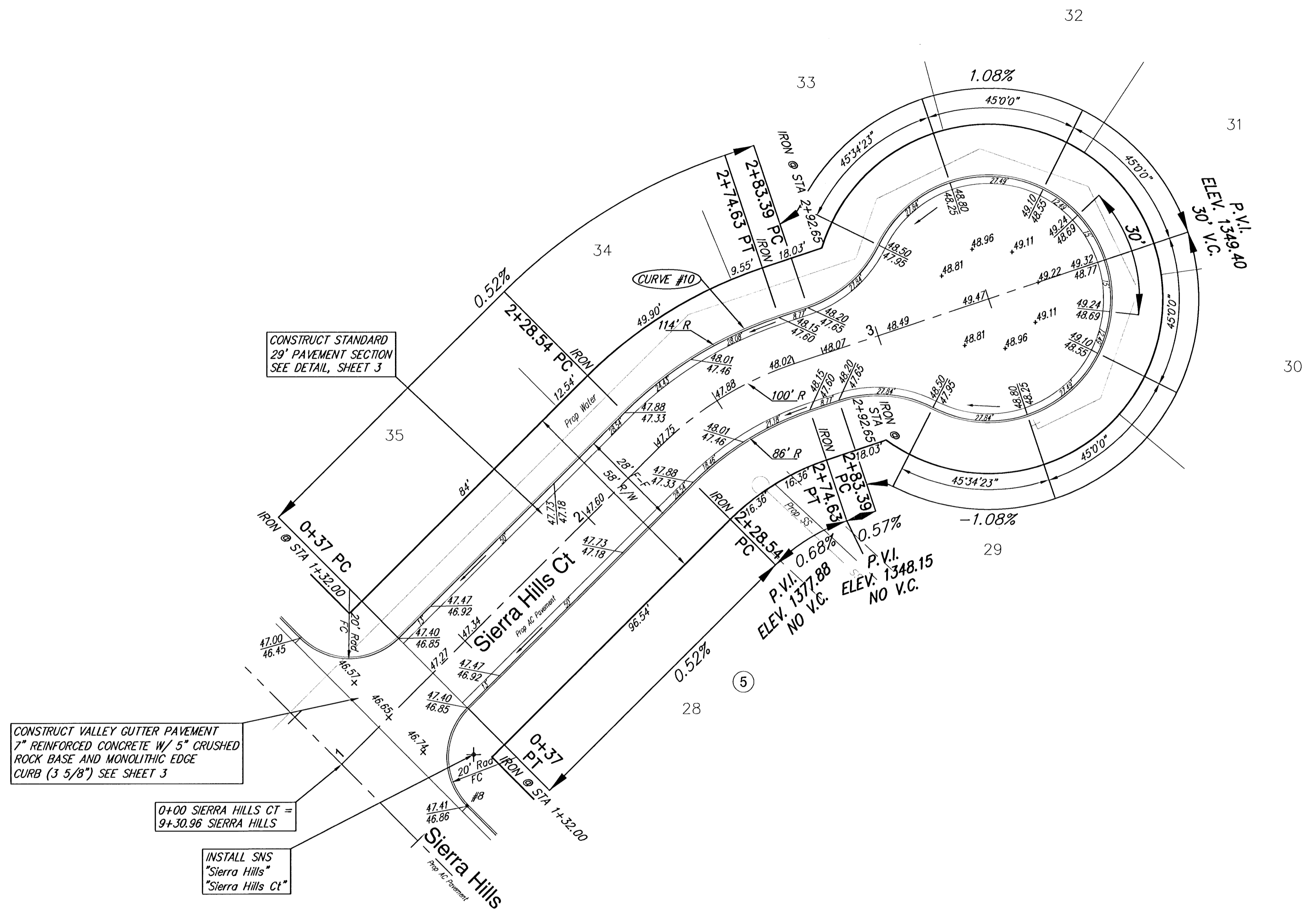


Subdivision Bench Marks				
No.	Street and Station	From CL	Description	Elevation
8	Sierra Hills, Sta 8+97	17" Lt	Top of E curb of Sierra Hills at E end of N return Triple Crown Ct	



CONSTRUCT STANDARD 29" PAVEMENT SECTION SEE DETAIL, SHEET 3

CONSTRUCT VALLEY GUTTER PAVEMENT 7" REINFORCED CONCRETE W/ 5" CRUSHED ROCK BASE AND MONOLITHIC EDGE CURB (3 5/8") SEE SHEET 3

0+00 SIERRA HILLS CT = 9+30.96 SIERRA HILLS

INSTALL SNS "Sierra Hills" "Sierra Hills Ct"

CONSTRUCT COMBINED ROLL TYPE CURB AND GUTTER (3 5/8") BOTH SIDES



SCALE 1" = 20'
IRON = •

NOTE: FOR CURVE DATA TABLES SEE SHEET 18

SIERRA HILLS STREET IMPROVEMENTS Sierra Hills Ct WICHITA, KANSAS			
	Ruggles & Bohm, P.A. Engineering, Surveying, Land Planning		DESIGN CMB
	924 North Main Wichita, Kansas 67203 www.rbkansas.com		DRAWN EJG
(316) 264-8008 (316) 264-4621 fax E-mail: info@rbkansas.com		REVIEW	NO. JOB 20271
DRAWING FILE Paving {Sierra Hills Ct}		PROJECT NUMBER 472-83703	DATE Apr. 22, 2003
			SHEET 13 OF 69