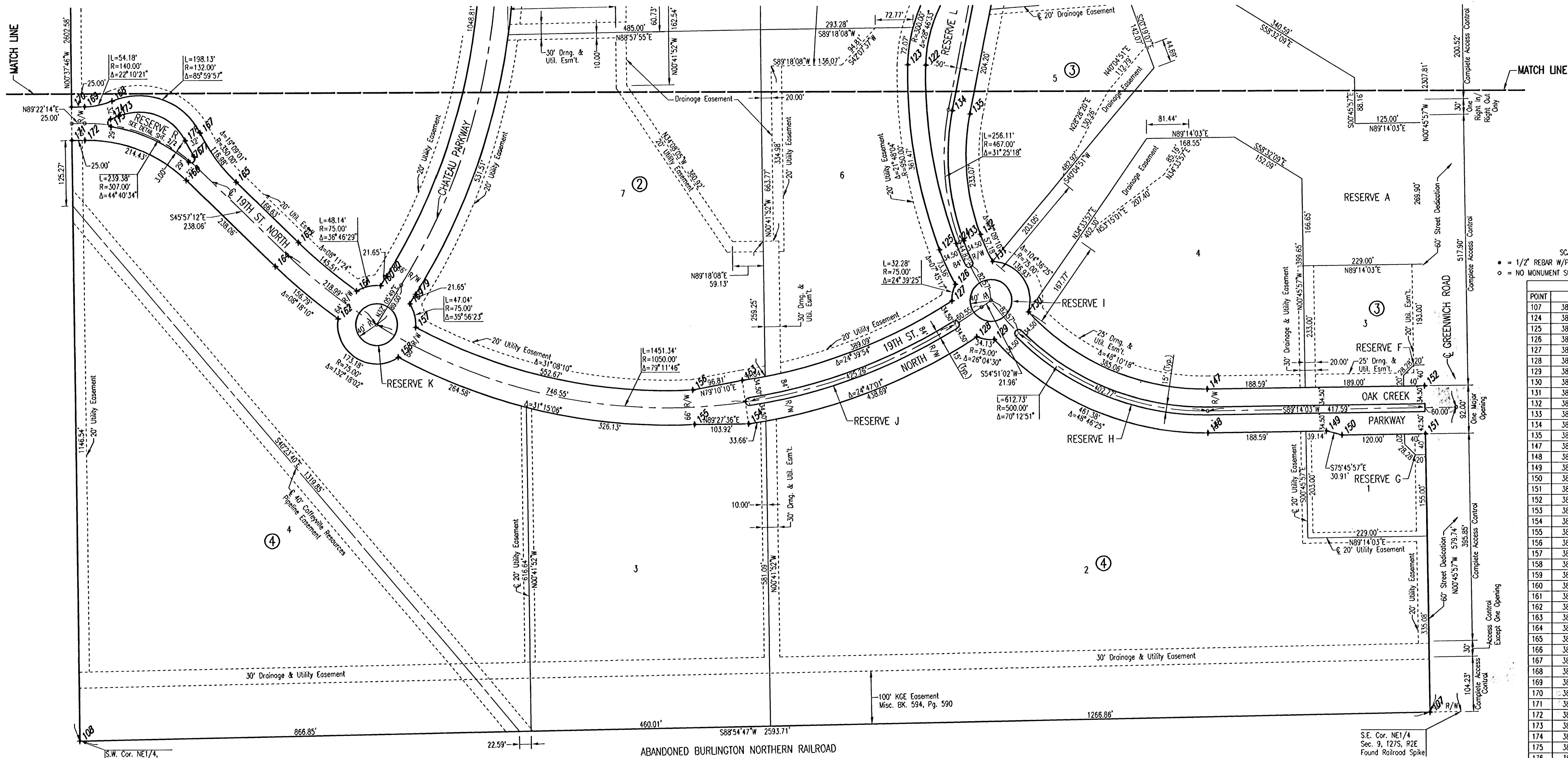


# OAK CREEK

## AN ADDITION TO WICHITA, SEDGWICK COUNTY, KANSAS



SCALE: 1" = 100'  
 \* = 1/2" REBAR W/PEC CAP UNLESS OTHERWISE NOTED  
 ○ = NO MONUMENT SET

POINT	NORTH	EAST
107	384637.8588	2374056.3888
124	385534.0984	2373149.2003
125	385521.9871	2373116.8961
126	385455.2479	2373147.2111
127	385423.9154	2373140.5759
128	385354.6162	2373188.0979
129	385349.6418	2373221.5685
130	385402.2813	2373287.2380
131	385499.3278	2373218.9074
132	385551.4755	2373195.5500
133	385539.3842	2373163.2457
134	385787.3249	2373142.2456
135	385780.8189	2373176.1266
147	385254.2982	2373630.5230
148	385170.3057	2373631.6458
149	385173.3498	2373859.3570
150	385165.7496	2373889.3177
151	385167.8883	2374049.3034
152	385259.8800	2374048.0736
153	385272.6760	2372737.4281
154	385189.5412	2372749.4517
155	385188.5620	2372845.5345
156	385254.4847	2372642.3402
157	385375.3638	2372110.0021
158	385318.3324	2372076.7271
159	385420.3057	2372098.9404
160	385455.3750	2372043.0284
161	385445.2193	2371996.8154
162	385392.1008	2371961.0564
163	38538.5799	2371885.3615
164	385492.5784	2371840.8660
165	385654.4252	2371765.5952
166	385658.0857	2371669.7567
167	385748.1728	2371696.5335
168	385810.3348	2371527.5588
169	385799.4021	2371474.8401
170	385799.1274	2371449.8416
171	385735.1313	2371450.5448
172	385735.4060	2371475.5435
173	385780.8356	2371539.9604
174	385775.2832	2371524.7971
175	385760.7186	2371525.8753
176	385693.0134	2371674.3133
177	385702.7422	2371685.4928
178	385733.7432	2371667.9715
179	385438.6496	2372110.4461
180	385473.7189	2372054.5342

\* 1000 = COORDINATE POINT NO.

S.W. Cor. NE1/4,  
 Sec. 9, T2S, R2E  
 Found 1/2" Iron Pipe

THIS ADDITION IS SUBJECT TO THE CONDITIONS OF OAK CREEK  
 COMMUNITY UNIT PLAN (DP-274).

ABANDONED BURLINGTON NORTHERN RAILROAD

S.E. Cor. NE1/4,  
 Sec. 9, T2S, R2E  
 Found Railroad Spike

DSNR: BLB OPER: BUS SCALE: 1"=100.00  
 Q:\2004\04688\000\04688-000-C-PLAT2 08-23-2005 09:19:26 am

Revision	By	Date
OAK CREEK - PHASE 1		
<b>PLAT</b>		
JAMES L. ARMOUR, P.E. - CITY ENGINEER CITY OF WICHITA PROJECT NO. 472-84209 <b>Professional Engineering Consultants, P.A.</b> 303 S. TOPEKA • WICHITA, KANSAS 67202 316-262-2691 • FAX 316-262-3093		
Designed by	BDB, BLB	Job No.
Drawn by	BJS	Date
		35-04688-000
		October 2004
		Sheet 4 of 86