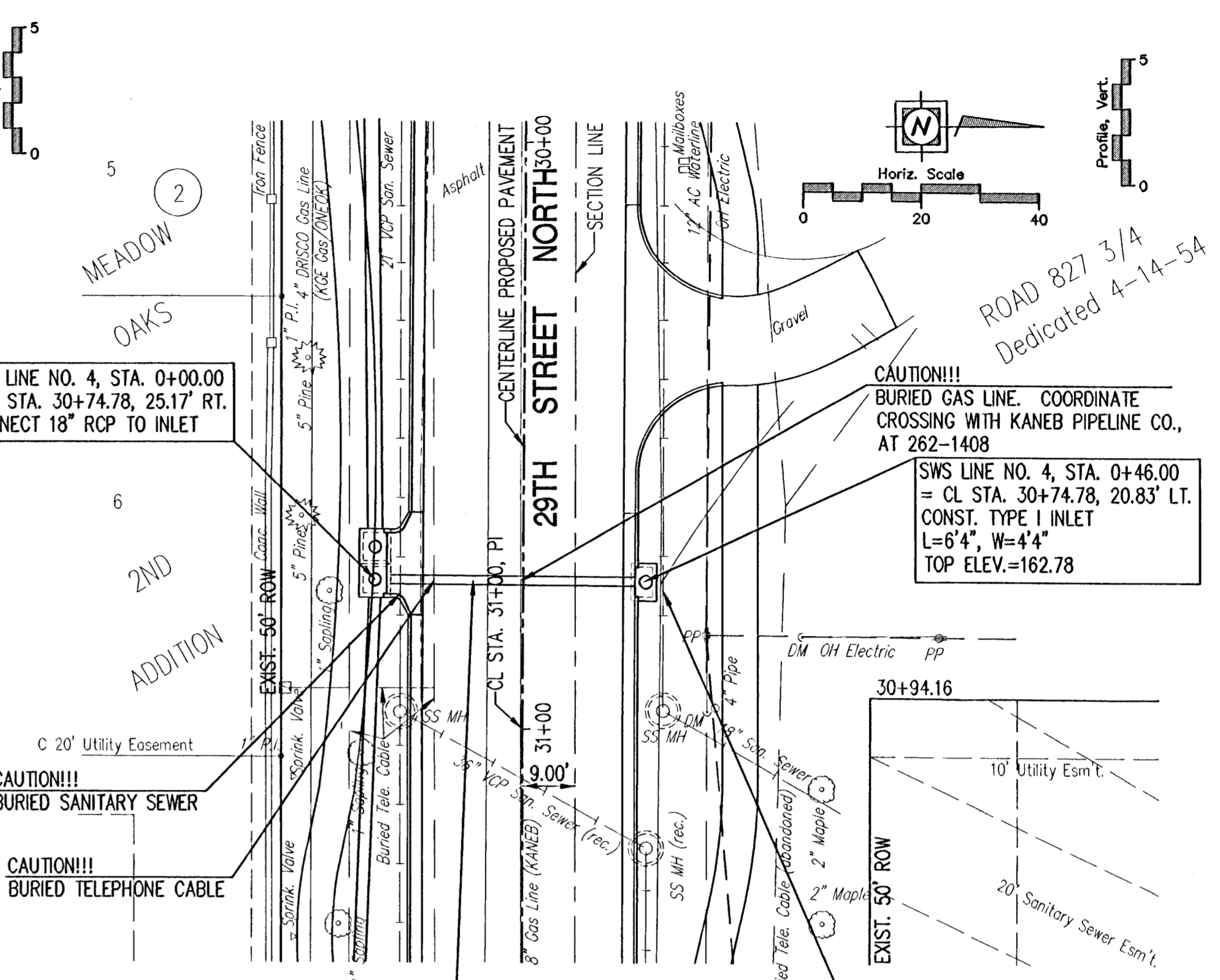
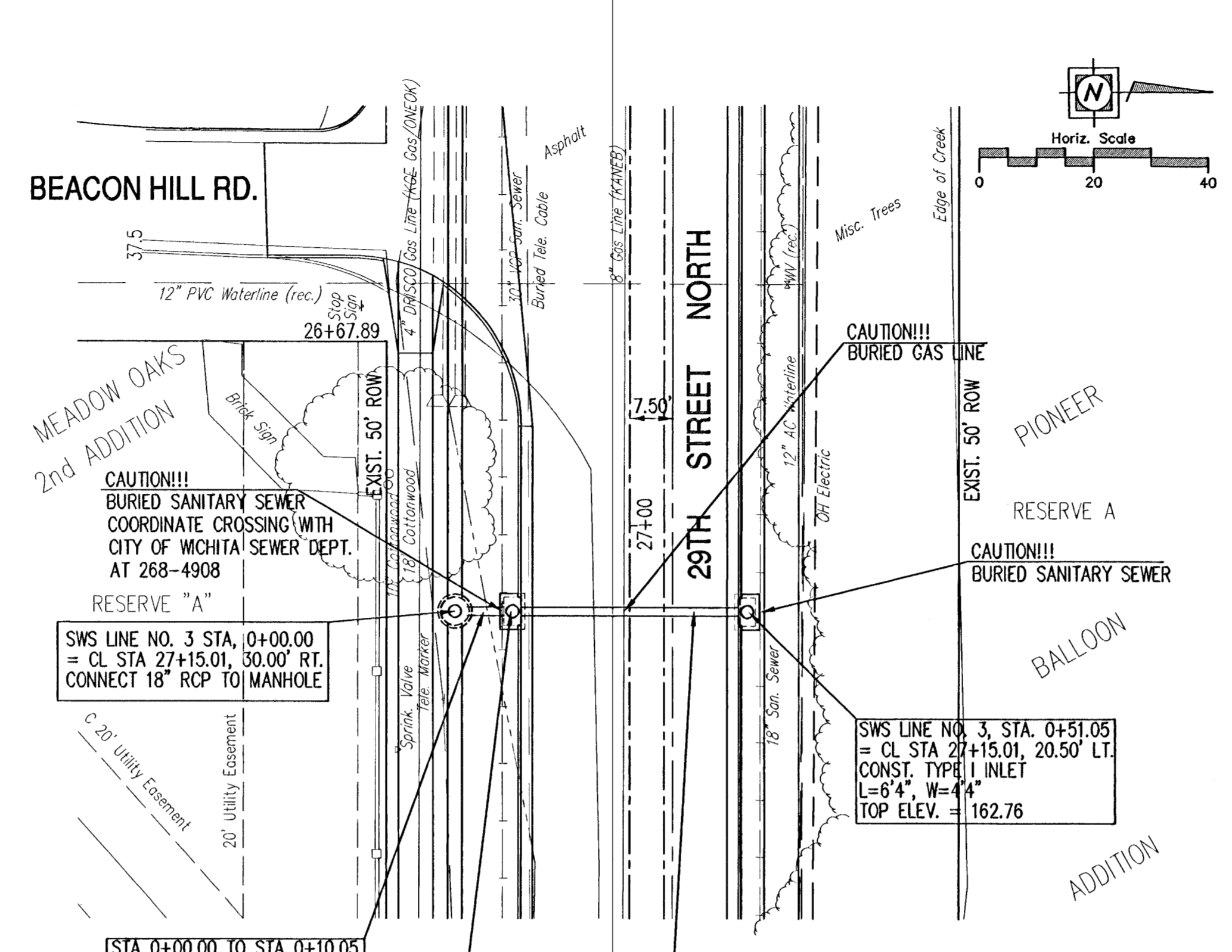
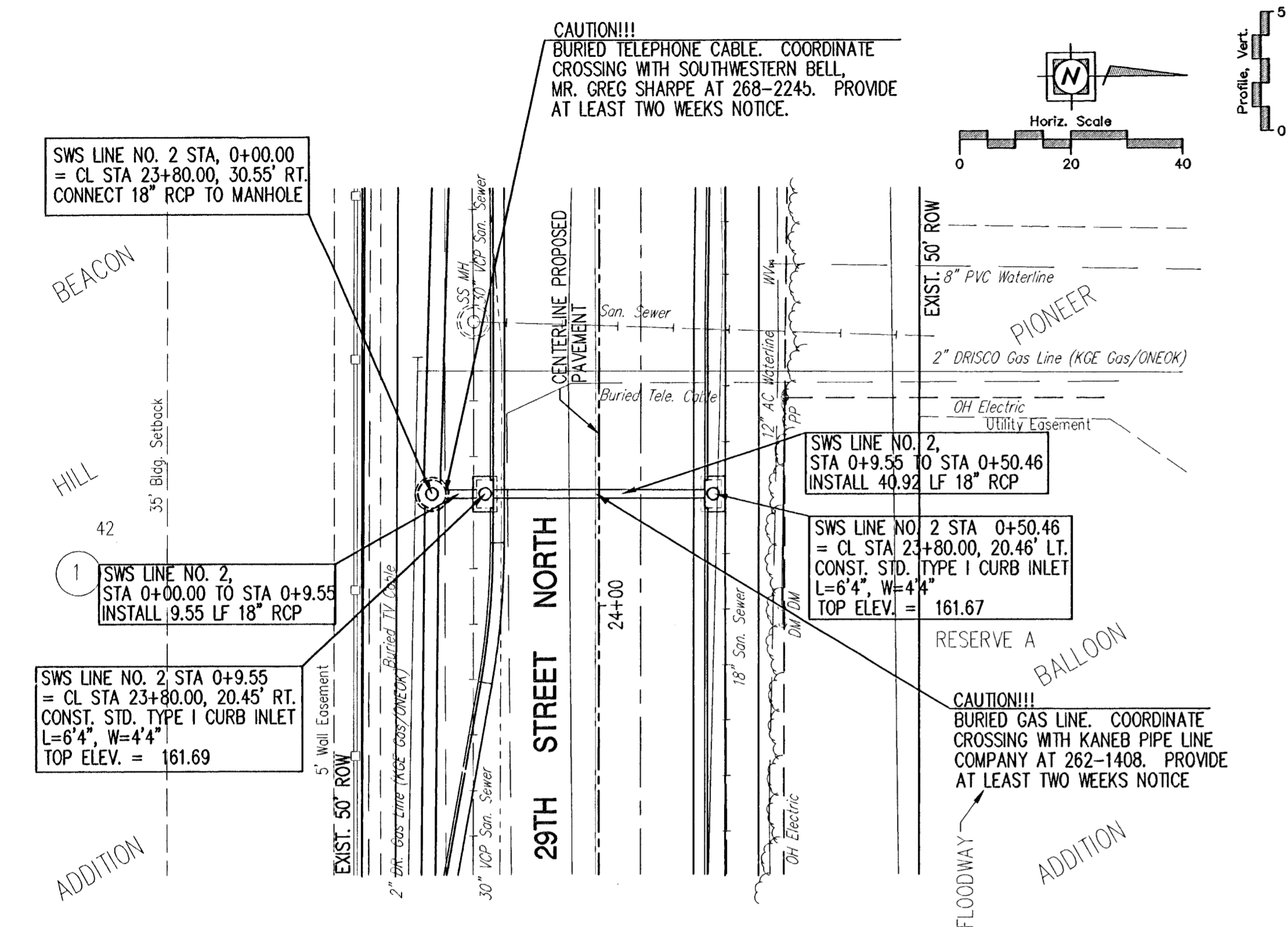


FHWA REGION NO.	STATE	PROJECT NO.	YEAR	SHEET NO.	TOTAL SHEETS
7	KANSAS	87 N-0137-01	99	23	34



CAUTION!!! BURIED TELEPHONE CABLE. COORDINATE CROSSING WITH SOUTHWESTERN BELL, MR. GREG SHARPE AT 268-2245. PROVIDE AT LEAST TWO WEEKS NOTICE.

SWS LINE NO. 2 STA. 0+00.00 TO STA. 0+9.55 INSTALL 9.55 LF 18" RCP

SWS LINE NO. 2 STA. 0+9.55 TO STA. 0+50.46 = CL STA. 23+80.00, 20.45' RT. CONST. STD. TYPE I CURB INLET L=6'4", W=4'4" TOP ELEV. = 161.69

SWS LINE NO. 2 STA. 0+50.46 TO STA. 0+50.46 = CL STA. 23+80.00, 20.46' LT. CONST. STD. TYPE I CURB INLET L=6'4", W=4'4" TOP ELEV. = 161.67

CAUTION!!! BURIED GAS LINE. COORDINATE CROSSING WITH KANED PIPE LINE COMPANY AT 262-1408. PROVIDE AT LEAST TWO WEEKS NOTICE.

CAUTION!!! BURIED SANITARY SEWER COORDINATE CROSSING WITH CITY OF WICHITA SEWER DEPT. AT 268-4908

SWS LINE NO. 3 STA. 0+00.00 TO STA. 0+11.87 = CL STA. 27+15.01, 30.00' RT. CONST. TYPE I INLET L=6'4", W=4'4" TOP ELEV. = 162.76

SWS LINE NO. 3 STA. 0+11.87 TO STA. 0+51.05 = CL STA. 27+15.01, 20.50' RT. CONST. TYPE I INLET L=6'4", W=4'4" TOP ELEV. = 162.78

CAUTION!!! BURIED SANITARY SEWER COORDINATE CROSSING WITH KANED PIPE LINE COMPANY AT 262-1408. PROVIDE AT LEAST TWO WEEKS NOTICE.

SWS LINE NO. 4 STA. 0+00.00 TO STA. 0+11.87 = CL STA. 30+74.78, 25.17' RT. CONST. TYPE I INLET L=6'4", W=4'4" TOP ELEV. = 162.78

SWS LINE NO. 4 STA. 0+11.87 TO STA. 0+46.00 = CL STA. 30+74.78, 20.83' LT. CONST. TYPE I INLET L=6'4", W=4'4" TOP ELEV. = 162.78

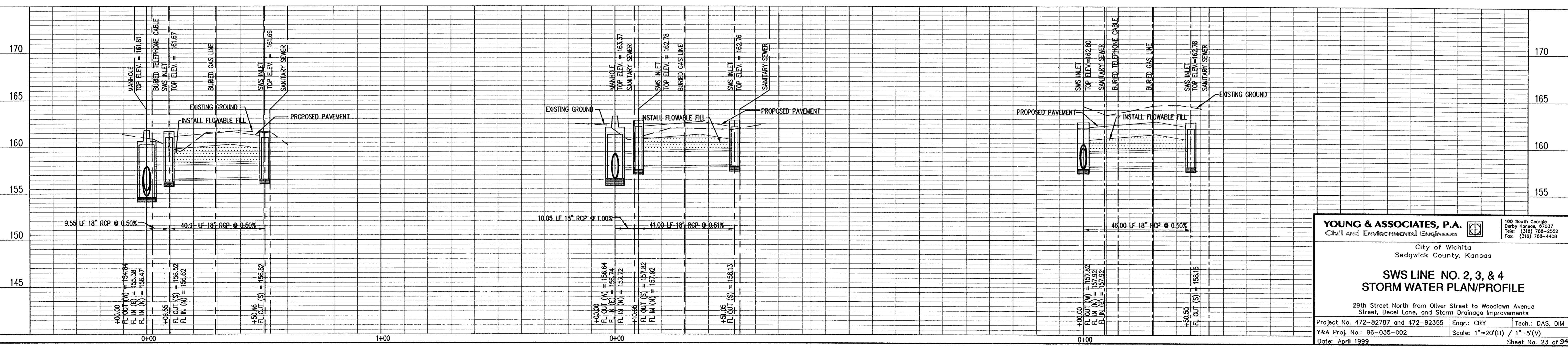
CAUTION!!! BURIED GAS LINE. COORDINATE CROSSING WITH KANED PIPELINE CO., AT 262-1408

BENCHMARK INFORMATION:
 RR SPIKE IN SW FACE OF POWER POLE 26.5' NORTH OF 1/16 CORNER, 1/4 MILE EAST OF 29TH STREET NORTH AND OLIVER. ELEV. = 161.18
 NW CORNER CONCRETE GUTTER ON BEACON HILL ROAD MEDIAN AT 29TH STREET NORTH. ELEV. = 162.99
 BARNES' COTTONWOOD CREEK ADDITION. NORTH RIM OF MANHOLE, 35' +/- SOUTH AND 3' +/- EAST OF SW CORNER OF LOT 1 ELEV. = 164.21

PIPELINE DISTANCES ARE FROM CL STRUCTURE TO CL STRUCTURE
 STORM SEWER LINE NO. 2

STORM SEWER LINE NO. 3

STORM SEWER LINE NO. 4



YOUNG & ASSOCIATES, P.A.
 Civil and Environmental Engineers
 City of Wichita
 Sedgewick County, Kansas

**SWS LINE NO. 2, 3, & 4
 STORM WATER PLAN/PROFILE**

29th Street North from Oliver Street to Woodlawn Avenue
 Street, Decel Lane, and Storm Drainage Improvements

Project No. 472-82787 and 472-82355 Engr.: CRY Tech.: DAS, DIM
 Y&A Proj. No.: 98-035-002 Scale: 1"=20'(H) / 1"=5'(V)
 Date: April 1999 Sheet No. 23 of 34